



CE Made in Italy



HOSE REELS CATALOGUE  
TECHNOLOGY FOR FLUIDYNAMICS  
No. E14/A2

---

The complete range of our products is presented in the specific catalogues:

- HOSE REELS CATALOGUE No. E14/A1
  - HOSE REELS CATALOGUE No. E14/A3
  - OIL CATALOGUE No. E14/LO
  - GREASE CATALOGUE No. E14/LG
  - DIAPHRAGM PUMPS CATALOGUE No. 2013/M
  - DIGITAL METER AND PULSER
  - FLUID CONTROL SYSTEM
- 



## HELP THE NATURE

Packaging contains, depending on the articles, one or more of the following materials; they must be recycled in accordance with current regulations in the country of use.

cardboard • polyethylene sack • polystyrene • paper • wood • nails  
• plastic strap • cellophane • clips • gummed paper



## OUR STRENGTHS

The widest range of hose reels designed to meet all the needs of our clients, even the most specific.

The quality, reliability and design that have always distinguished the Ecodora brand in the global market.

The research and development as a flagship of our company to always offer cutting-edge solutions.

A technical service before and after sales to recommend the most suitable product according to the customer's needs as well as to provide support to the end users.

## OUR GOALS

To develop a long lasting cooperation with our customers by listening to their needs and their expectations.

To meet every user's need by offering only high quality products.

[www.ecodora.com](http://www.ecodora.com)  
[info@ecodora.com](mailto:info@ecodora.com)

CE Made in Italy

# Ecodora presents its wide range of hose reels for fluids

**Automatic hose reels with constant strength spring, open and enclosed, fixed and swivelling versions available, made in painted steel, stainless steel AISI 304, and in composite technopolymer materials.**

Other hose reels suitable for different fluids, like oil, grease, diesel and similar, or working with manual or motor driven rewinding (hydraulic, pneumatic or electric motor) are described in dedicated catalog (see page 2).

Sturdy and compact, **Ecodora** hose reels allow **to manage** any kind of flexible hoses in a practical and safest way for transferring every type of fluids.

When in use, hose reels allow **to unwind** quickly and easily only the desired length of hose. After use, the unwound hose can be **re-wound** immediately by keeping an orderly workplace free of hindrances, thus improving functionality and safety, and **safeguarding** hoses against wear and breakage too.



aviation



agriculture



building



foundries



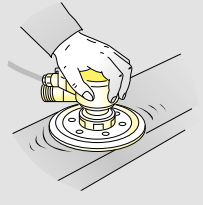
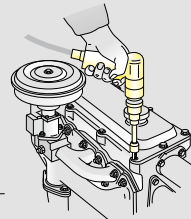
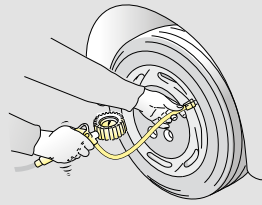
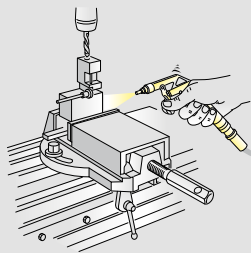
armed forces



marine

# Hose Reels Applications

**Ecodora hose reels** have an excellent versatility and can be used for most applications including industries, workshops, service stations, garages, agriculture, building, and many others; equipped with a high quality Polyurethane hose they are the ideal tools for transferring water, detergent and air with max temperature of 70°C and max pressure of 20 bar.



mining



woodworking



general industries



food industries



service stations



oil-refinery

# Index for Series



**HOSE REEL SERIES 260**

from page **8 to 11**



**HOSE REEL SERIES 250-300**

from page **12 to 15**



**HOSE REEL SERIES 270 - 300 - 350 - 430**

from page **16 to 19**

**AIR, WATER MAX 40 °C 20 bar** page **20**

**AIR, DETERGENT MAX 70 °C 20 bar** page **20**

**AIR, WATER MAX 70 °C 20 bar** page **21**



**ACCESSORIES** page **22**



**HOSE** from page **23 to 24**

**ENCLOSED PORTABLE ABS shockproof**

**Series**



**260**



**250-300**



**270-300  
350-430**

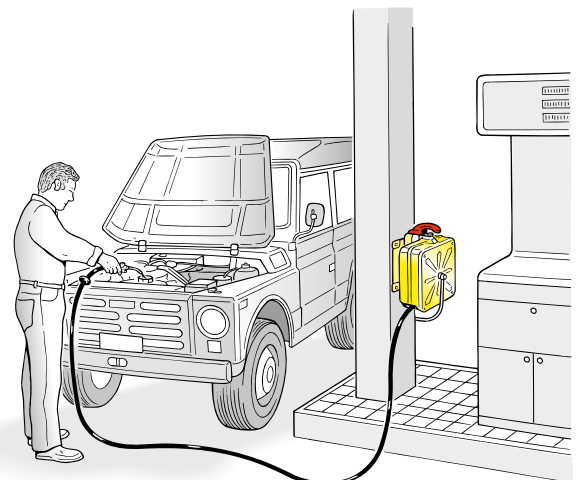
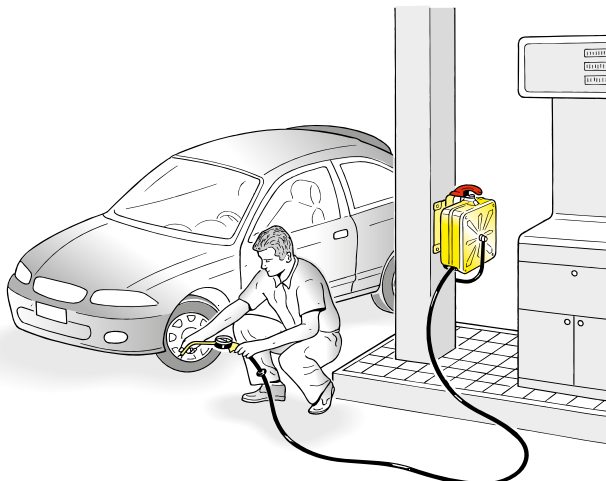


Swivelling wall support with bayonet hooking

The result of the cover and the inner spool in ABS material is a light and robust frame. To prevent removal or theft of the hose reel, it can be secured with a bolt or padlock. Easy to install in every location: on the wall, on the floor, on the ceiling or mounted on a vehicle.

Fluid - Pressure	PAINTED STEEL		
	Joint	Seals	Central shaft
Air, Water 40°C - 20 bar	brass	Viton	galvanized steel

**USES**





# Series 260

## ENCLOSED ABS shockproof



The result of the cover and the inner spool in shockproof ABS material is a light and robust frame. Easy to install in every location: on the wall, on the floor, on the ceiling or mounted on a vehicle.

**Automatic block system** allows the block of the hose at the desired measure.

Automatic with constant **strength spring** completely enclosed protected and lubricated inside the reel. Tested to resist more than 25000 cycles.\*

**Adjustable hose stop.**

Large and **multidirectional roller guide** with self lubricating hose guide rollers.

**The shockproof ABS handle** facilitates the transport of the hose reel.

**The bushes** are in self-lubricating material with high resistance to wear and excellent sliding quality.

**Shockproof ABS cover** with high resistance to strokes or collisions.

The **wall bracket** with bayonet hooking is easy to mount and allows to remove quickly the hose reel when necessary.

**Swivel joint** in brass material and elbow in acetalic resin with Viton seals.

\* A cycle is composed by a number of rotations in one direction and the same in the opposite direction. The number of rotations depends on the spring model. This allows to simulate the rewinding and unwinding of a hose with its maximum length.

# Hoses characteristics

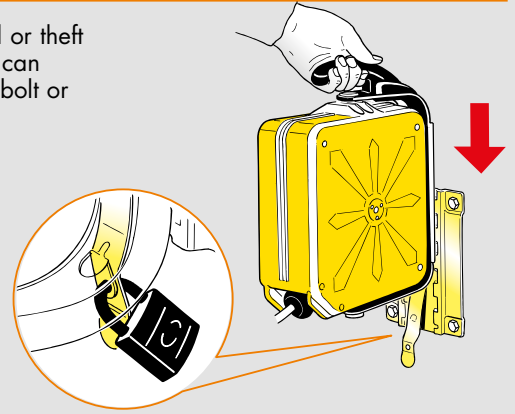
- polyurethane hose (blue) with protection spring on connection
- outlet brass swivel joint
- brass fitting
- inlet connection 1,5 m

Swivel joint to facilitate the use of air-operated tools

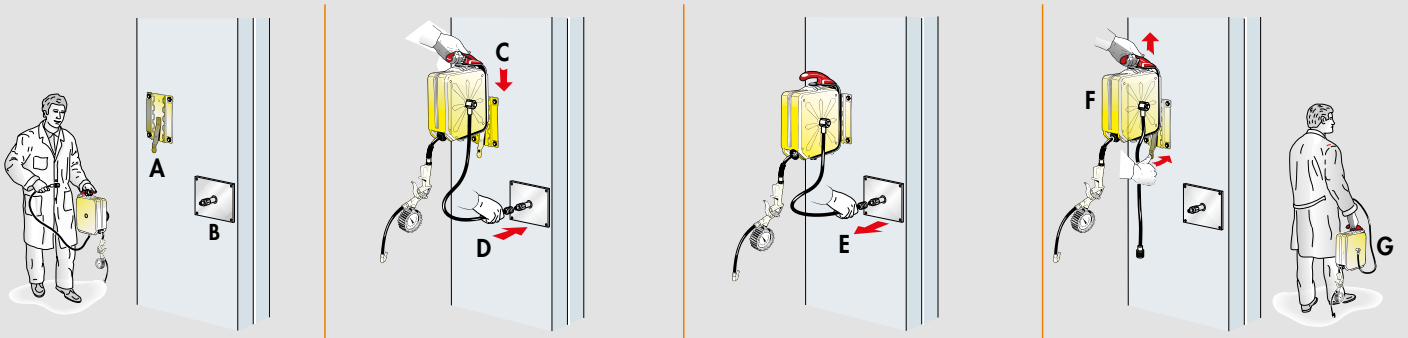
Hose anti-bending spring



To prevent removal or theft of the hose reel, it can be secured with a bolt or padlock.



# Easy connection and disconnection of the reel

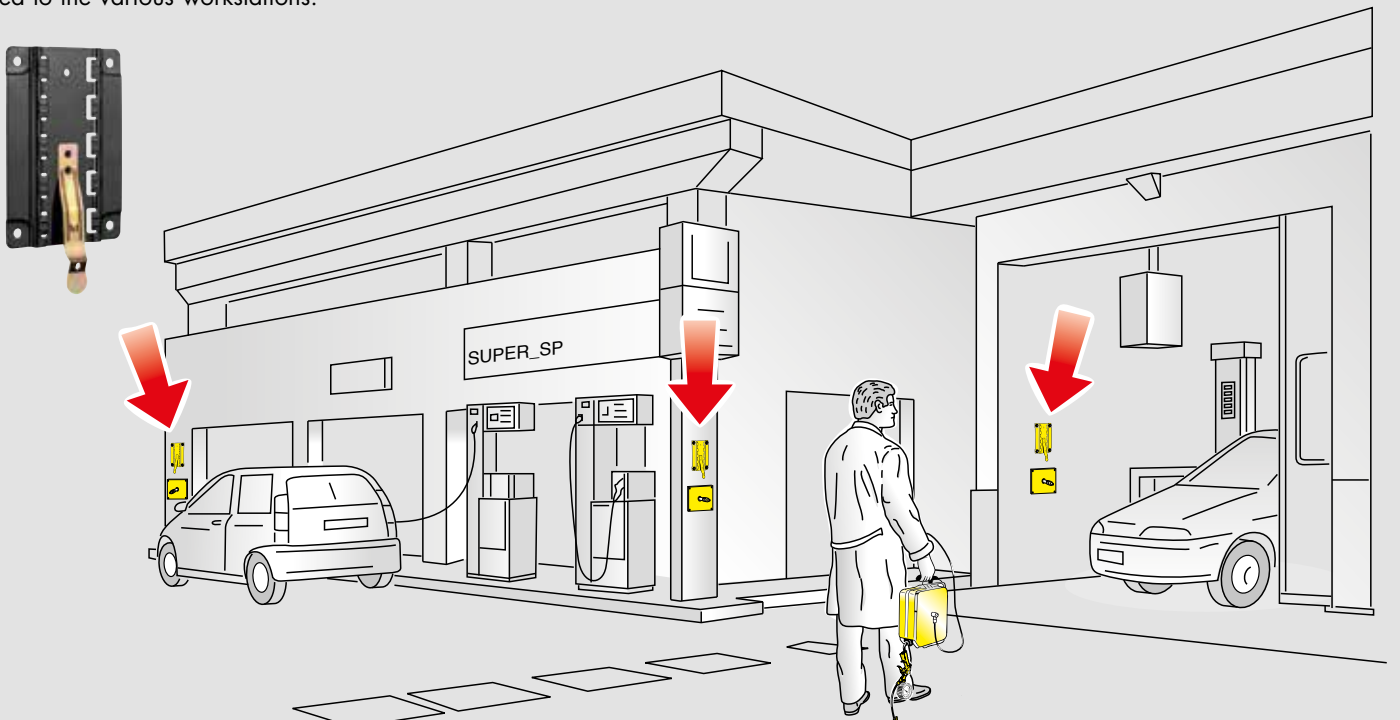


Quick Hooking and quick Release of the hose reel at every work point. Bayonet bracket easy wall-mounting (A), quick connection to compressed-air system (B), quick connection of hose-reel to wall bracket (C), quick connection of hose reel to compressed-air system (D). Release: quick release from compressed-air system (E), quick release of hose-reel from wall bracket (F), easy to carry handle reduced weight (G).

# Wall support with bayonet hooking

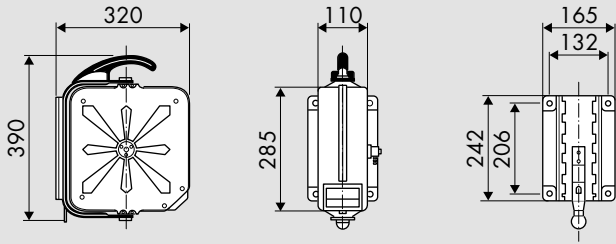
**P/N 260/01**

Series 260 hose reels are equipped with a **wall bracket with bayonet hooking**. The placing of several brackets in the service points allows the hose reel to be easily moved to the various workstations.



# Overall dimensions (mm)

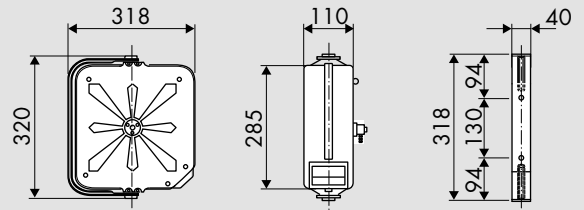
## SWIVELLING WALL SUPPORT WITH BAYONET HOOKING



Series	1-m <sup>3</sup>	Kg*
260	0,025	6,5 (with hose)

\* Packing is included in the weight

## SWIVELLING SIMPLE WALL SUPPORT

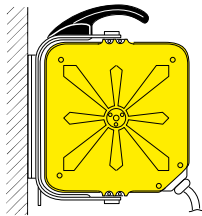


Series	1-m <sup>3</sup>	Kg*
260	0,025	6 (with hose)

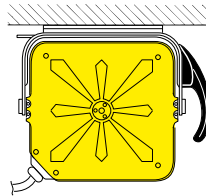
\* Packing is included in the weight

## Hose reel installation

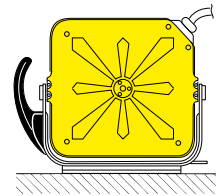
Standard wall installation



Ceiling installation



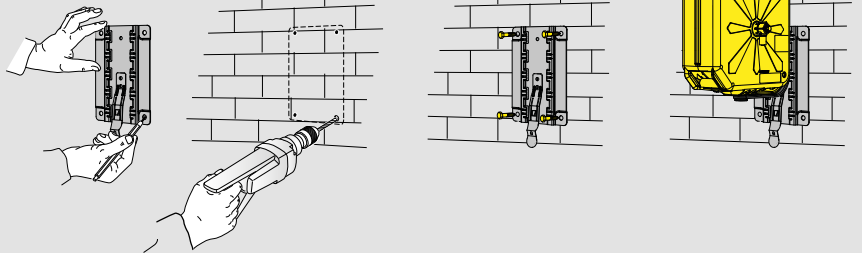
Bench installation



## Wall mounting

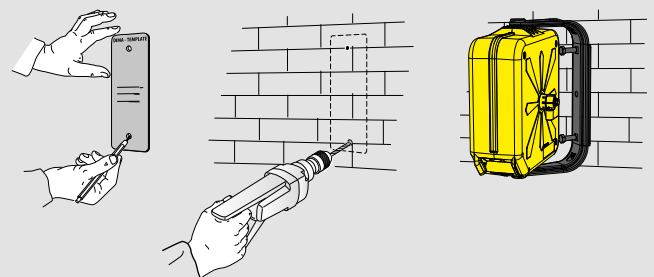
### SERIES 260 PORTABLE

Using the wall support it is easy to mark the right positions for the screws anchor.



### SERIES 260

The practical template, supplied with this series of reels, allows to mark the right positions for the screws anchors.



## PAINTED STEEL Fixed - Swivelling

Series

**FIXED-OPEN**

**SWIVELLING-ENCLOSED**



**S. 250**



**S. 250**

**S. 300**

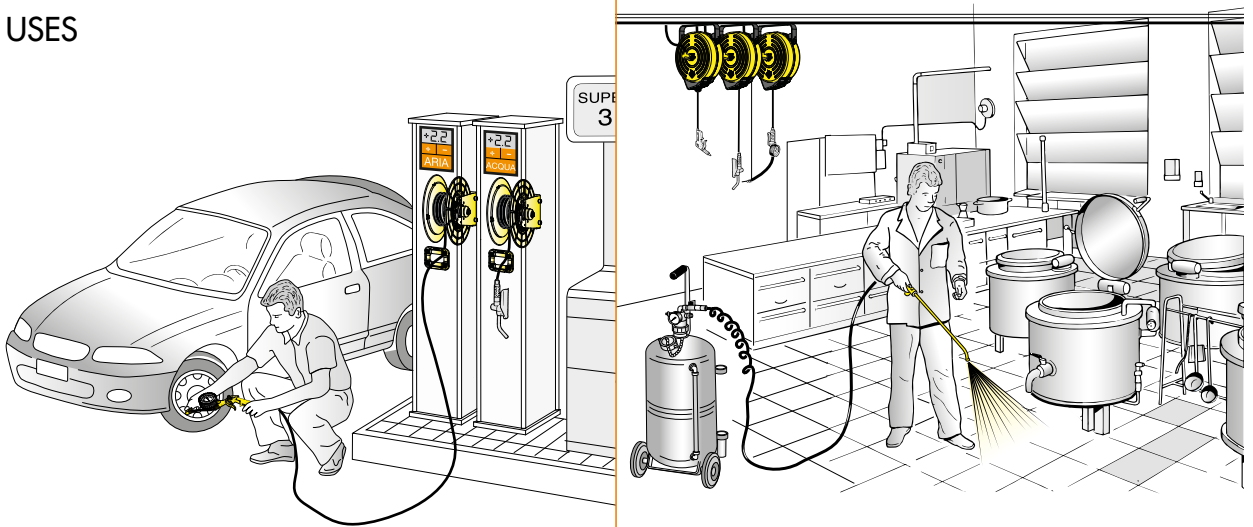
Practical and robust solutions for daily use for inside and outside installation as well. The enclosed series are painted with epoxy resins with a min thickness of 80 micron and subjected to a "salty fog" corrosion test. Easy to install in every location: on the wall, on the floor, on the ceiling or mounted on a vehicle.

Fluid - Pressure	PAINTED STEEL			STAINLESS STEEL		
	Joint	Seals	Central shaft	Joint	Seals	Central shaft
Air, Water 40°C 20 bar	brass	Viton	Delrin	-	-	-
Water Detergent 70°C 20 bar	-	-	-	stainless steel AISI 304	Viton	Delrin



270-300  
350-430

### USES



# Series 250-300

## STAINLESS STEEL AISI 304 Swivelling



S. 250



S. 300

Suggested for aggressive workplace or in application with use of water. The electrolytic polishing surface treatment, on the stainless steel cover, helps the elimination of the surface impurities, increases the average life of the hose reel and improves its appearance.

In accordance with directive  
**Atex 94/9 II 3GD c IIB TX**

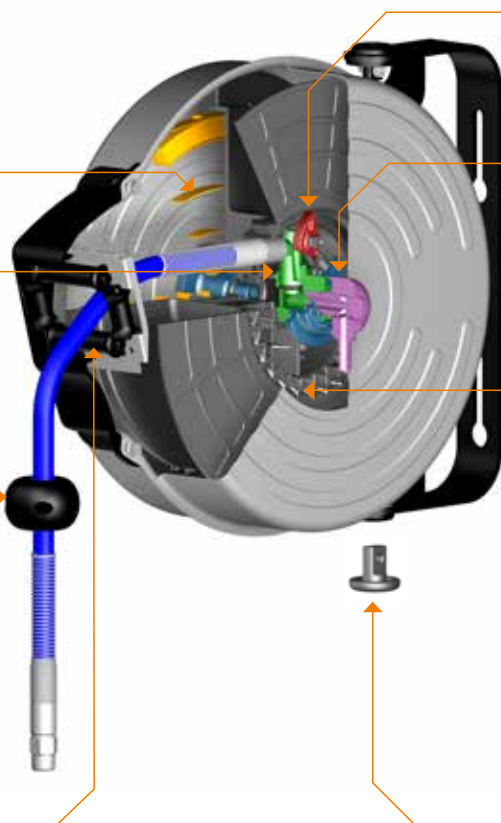


Rewind spring completely protected from the external environment. Tested to resist more than 30000 cycles.\*

Unions and central pin.

Adjustable hose stop.

Large and **multidirectional roller guide** with self lubricating hose guide rollers. with stainless steel internal strengthening.



Pawl of increased thickness with strengthening ribs to ensure high resistance to stress.

Swivel joint in available, depending on the series, in stainless steel Aisi 304 or brass material.

Rack with increased width and strengthening ribs to ensure greater durability and sturdiness.

Bayonet bracket.

Screw to lock the reel pivoting.



\* A cycle is composed by a number of rotations in one direction and the same in the opposite direction. The number of rotations depends on the spring model. This allows to simulate the rewinding and unwinding of a hose with its maximum length.

# Hoses characteristics

Swivel joint to facilitate the use of air-operated tools

Hose anti-bending spring

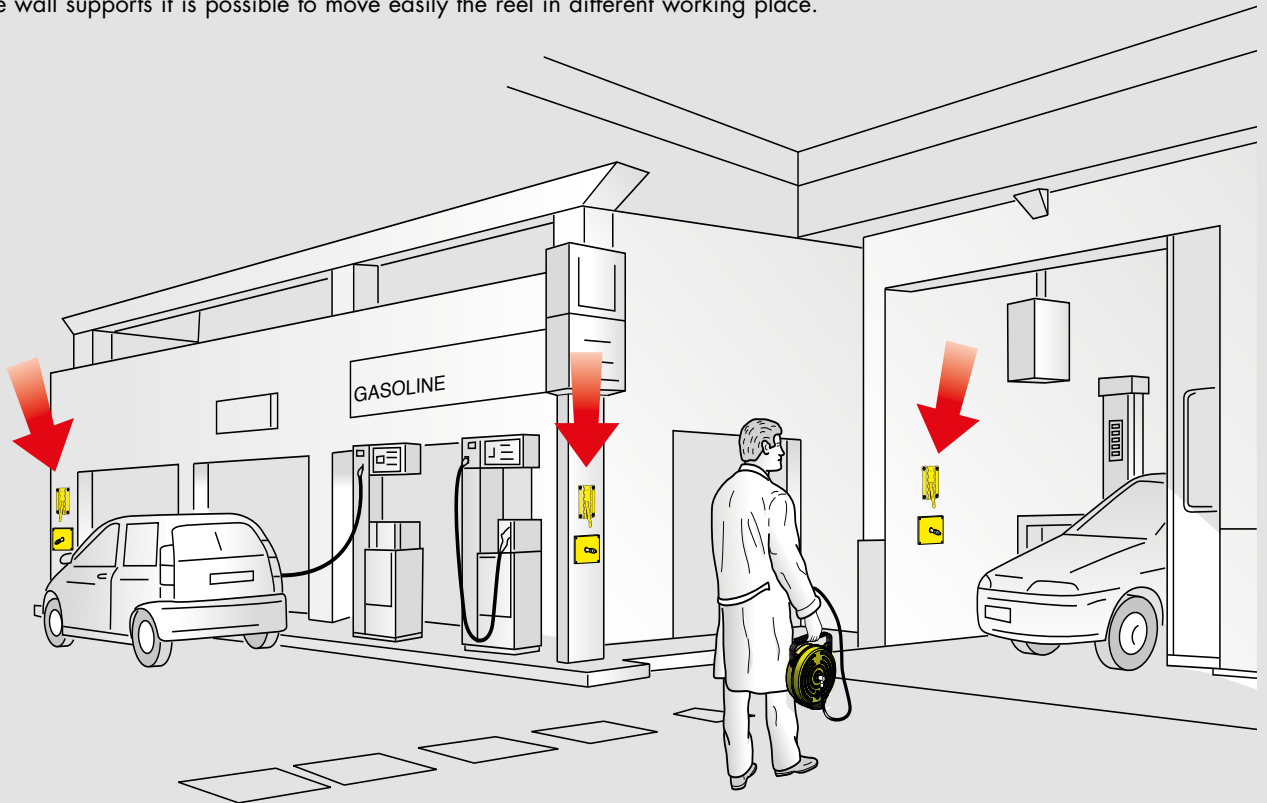


- polyurethane hose (blue) with protection spring on connection
- outlet brass or stainless steel swivel joint
- brass fittings
- inlet connection 1,5 m

# Wall support for bayonet hooking for S. 250 - 300 enclosed

P/N 260/02

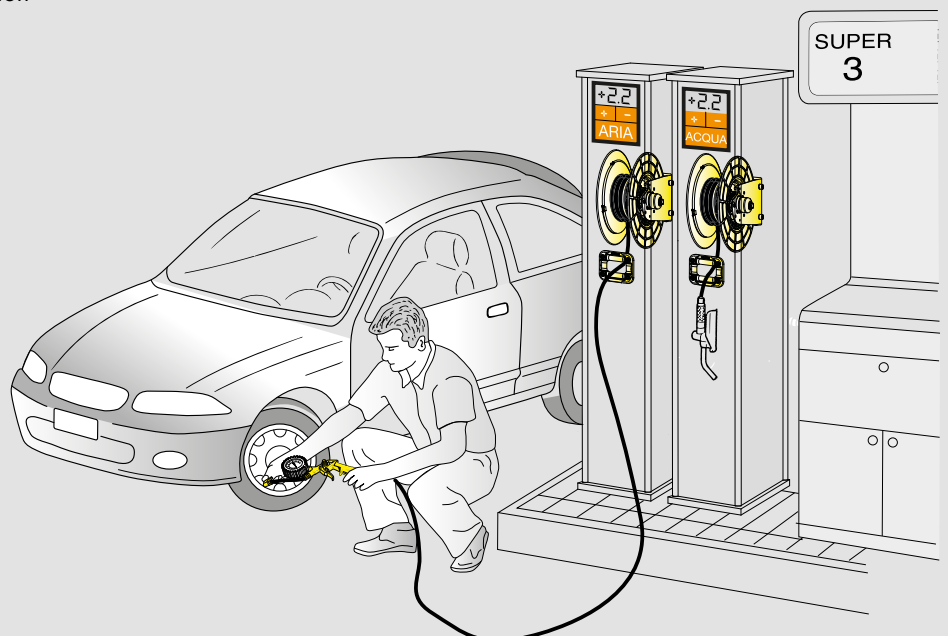
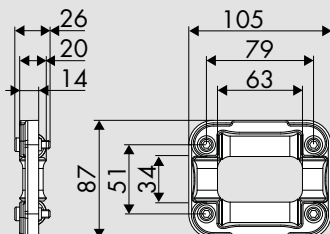
Hose reels **series 250 and 300**, may be supplied on request with a wall support for bayonet hooking. Placing 2 or more wall supports it is possible to move easily the reel in different working place.



# Hose guide for S. 250 open

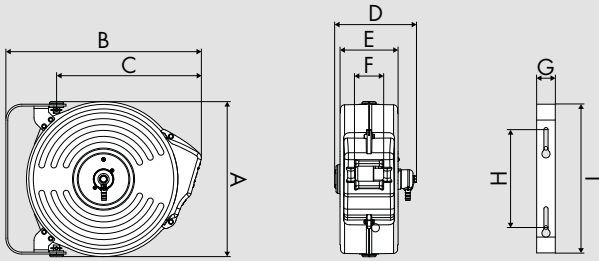
P/N 89005

Hose guide with 4 opposed rollers for application of service columns in technopolymer.

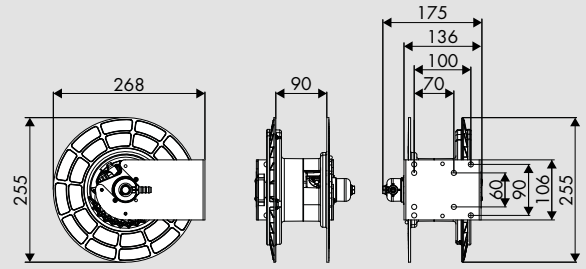


# Overall dimensions (mm)

## ENCLOSED



## OPEN



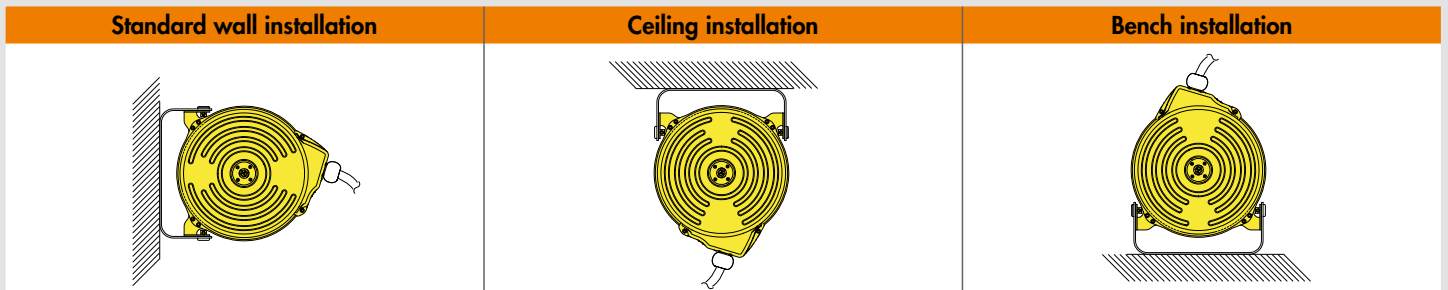
Series	A	B	C	D	E	F	G	H	I	1-m <sup>3</sup>	Kg*
250	281	338	230	173	124	62	40	from 130 to 210	319	0,062	from 7 to 8
300	330	416	308	174	124	62	40	from 130 to 210	319	0,062	from 7,6 to 9,5

Series	1-m <sup>3</sup>	Kg*
250	0,02	from 6,5 to 7,5

\* Packing is included in the weight

\* Packing is included in the weight

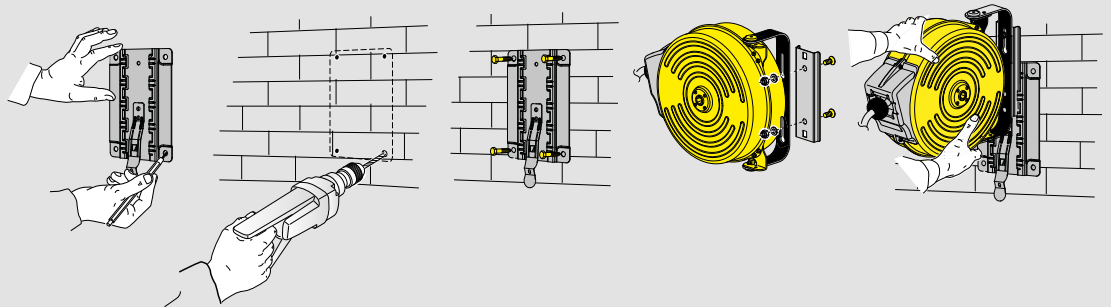
## Hose reel installation



## Wall mounting

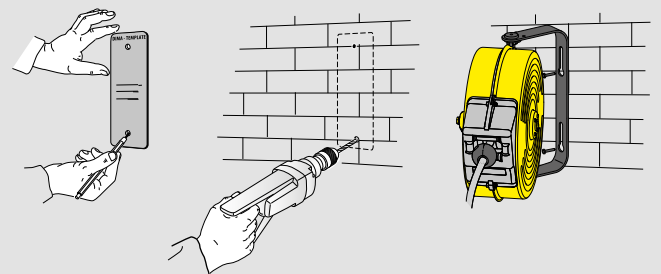
### FIXED BRACKET

The wall support for bayonet hooking is available on request. Using the wall support it is easy to mark the right positions for the screws anchor and placing 2 or more wall supports it is possible to move easily the reel in different working place.



### TEMPLATE

Using the template supplied with the hose reel it's easier to mark plug holes for hose reel fixing.



### Series



S. 270

S. 300

S. 350

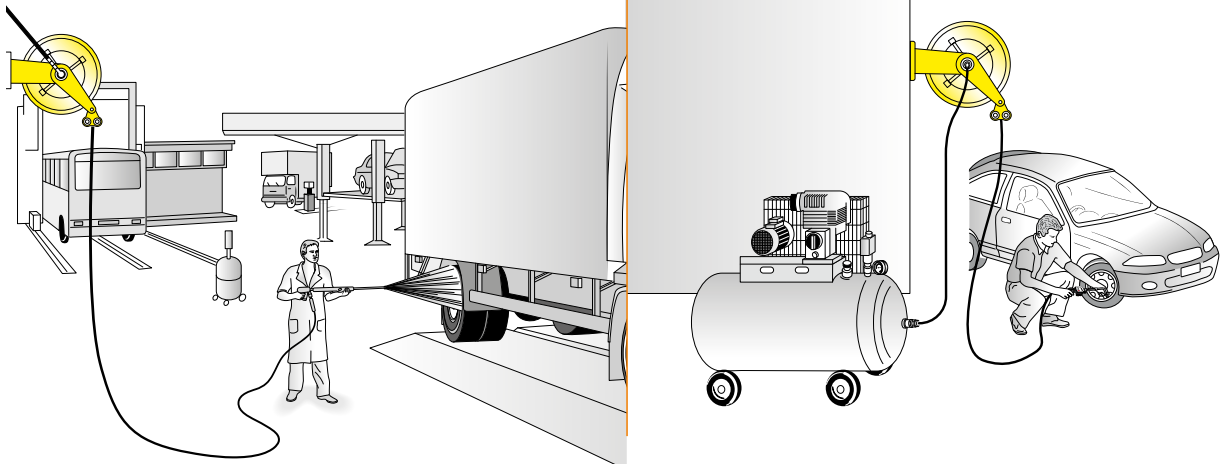
Resistant with the corrosion: all the components are painted (painting with epoxy powder coating, thickness min. 80µ), or finished with a galvanic treatment, ideal to work externally.  
Easy to install everywhere, like for example on the wall, on the floor, on the ceiling and on the vehicles.

Fluid - Pressure	PAINTED STEEL 270-300-350			PAINTED STEEL 430		
	Joint	Seals	Central shaft	Joint	Seals	Central shaft
Air, Water 70°C <b>20 bar</b>	brass	Viton	PA6 Nylon	brass	Viton	galvanized steel



270-300  
350-430

### USES





# Series 430

## PAINTED STEEL Fixed - Swivelling



S. 430

Resistant with the corrosion: all the components are painted (painting with epoxy powder coating, thickness min. 80µ), or finished with a galvanic treatment, ideal to work externally.  
Easy to install everywhere, like for example on the wall, on the floor, on the ceiling and on the vehicles.

In accordance with directive  
**Atex 94/9 II 3 GD c X**



**Automatic block system** built with material compliant with Atex legislation, it allows the block of the hose at the desired measure.

Solid and compact **fixed painted steel bracket** with 4 slotted mounting holes for easy and safe installation.

**Adjustable guide arms** allows delivery hose going out at the desired location depending on hose reel installation.

**Adjustable hose stop.**

Large and **multidirectional roller guide** with self lubricating hose guide rollers.

**Drum support bushings** in Nylon PA6, self lubricating, material resistant against corrosion.

The **drum**, in painted steel or in stainless steel AISI 304, is sturdy and practical, with beads to reinforce the structure and rounded border.

Automatic with constant **strength spring** completely enclosed protected and lubricated inside the reel. Tested to resist more than 20000 cycles for series 270 - 300 - 350 and from 15000 to 20000 cycles for series 430\*.

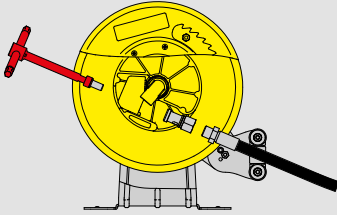
**Swivel joint** with ideal internal dimensions to guarantee the most possible flow. It is realized in brass with seals in Viton.

\* A cycle is composed by a number of rotations in one direction and the same in the opposite direction. The number of rotations depends on the spring model. This allows to simulate the rewinding and unwinding of a hose with its maximum length.

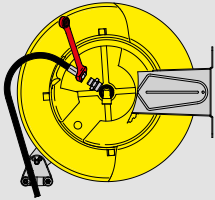
# Hose reel capacity

Hose external diameter	Hose reel series			
	270	300	350	430
ø 12 mm	length max. 16 m	length max. 18 m	length max. 22 m	-
ø 14 mm	length max. 14 m	length max. 16 m	length max. 20 m	-
ø 15 mm	length max. 12 m	length max. 14 m	length max. 18 m	-
ø 16 mm	length max. 10 m	length max. 12 m	length max. 18 m	-
ø 17 mm	-	length max. 12 m	length max. 17 m	length max. 21 m
ø 19 mm	-	-	-	length max. 15 m

## Hose reel outlet hose connection



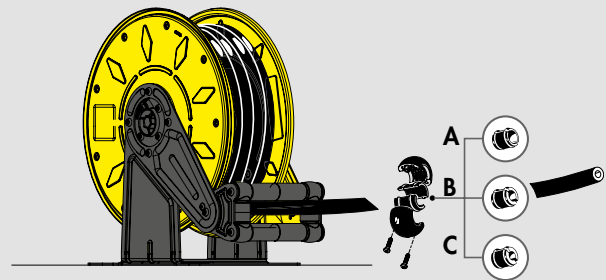
Series	Inlet	Outlet
270	F 3/8" - F 1/2"	F 3/8" - F 1/2"
300	F 3/8" - F 1/2"	F 3/8" - F 1/2"
350	F 3/8" - F 1/2"	F 3/8" - F 1/2"



For hoses up to 1/2"		
Series	Inlet	Outlet
430	F 1/2"	F 1/2"

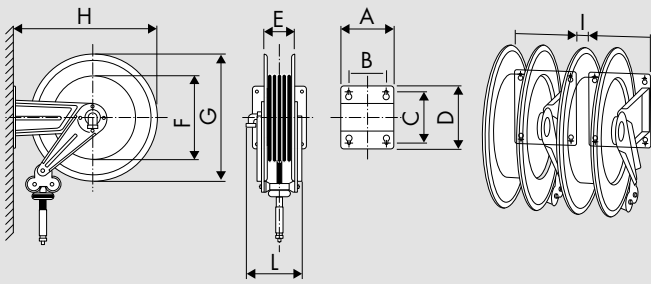
## Universal hose stop

The universal hose stop is just mounted in all models with hose. The models without hose come, together with the hose stop, with some adaptors for hoses of different sizes.



Fluid - Pressure	270 ø (mm)	300 ø (mm)	350 ø (mm)	430 ø (mm)
Air, Water 70°C 20 bar	12-14-16	12-14-16	12-14-16	12-17-19

# Overall dimensions (mm)



Series	A	B	C	D	E	F	G	H	I	L	1-m <sup>3</sup>	Kg*
270	186	140	196	226	110	240	300	320	20	210	0,037	da 10 a 13
300	186	140	196	226	110	280	350	365	20	215	0,045	da 11 a 16
350	186	140	196	226	110	280	390	410	20	215	0,068	da 13 a 19,5
430	186	140	196	226	115	261	450	460	20	215	0,098	da 16 a 22,5

\* Packing is included in the weight

## Hose reel installation

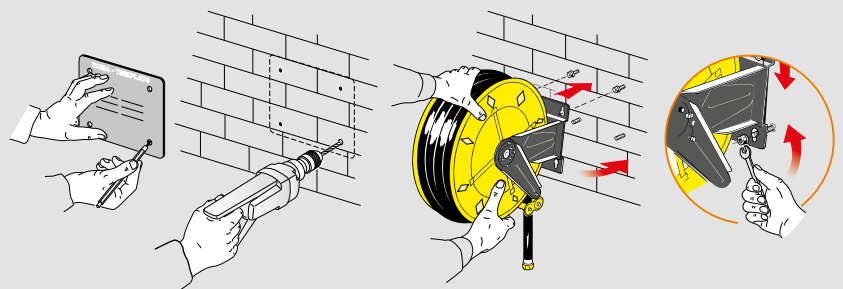
The adjustable arms can be easily repositioned according to needs

Standard wall installation	Optional wall installation	Bench installation	Ceiling installation
<p>1</p>	<p>2</p>	<p>3</p>	<p>4</p>
<p>To switch from 1 to 2 configuration is necessary to follow this simple procedure</p>			
Starting position	Unlock fixing arms screws	Arms rotation	Final position
			<p>Hose reel rotation of 180°</p>

## Wall mounting

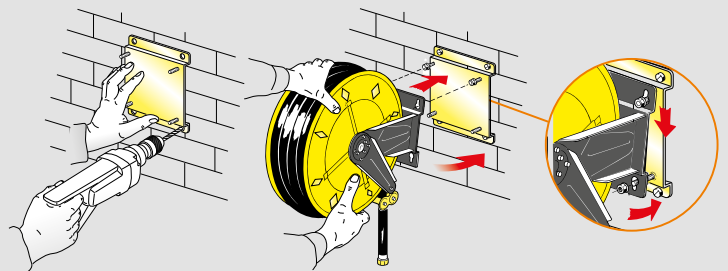
### TEMPLATE

The solid and compact fixed bracket, included with the hose reel, is provided with four slotted mounting holes for easy and safe installation. Using the template supplied with the hose reel it's easier to mark plugs holes for hose reel fixing.



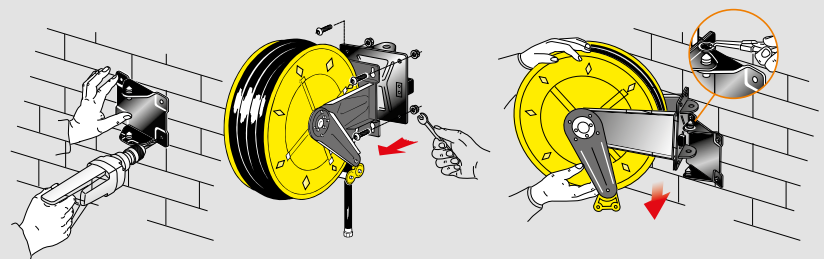
### WALL BRACKET

On request an additional bracket for a quick installation and disassembly is available. Furthermore this bracket allows installing several hose reels in series. The P/N takes the suffix /SM. For example: 430/10 becomes 430/10/SM.



### SWIVELLING BRACKET

On request a swivelling bracket to make the reel turning 40° to the right and 40° to the left is available. The P/N takes the suffix /SO. For example: 430/10 becomes 430/10/SO.



# Air, Water max 40°C 20 bar

## BAYONET HOOKING



## SIMPLE HOOKING



### Supplied with:

- polyurethane hose with brass coupling
- brass swivel joint
- "Viton" seals
- central shaft in galvanized steel
- inlet hose 1,5 m to connect the hose reel to the system



	P/N	P/N	Hose supplied	Connection	
				inlet	outlet
S. 260	260/11	-	11m 8x12 (911/11)	M 1/4"G	M 1/4"G
	260/12	-	11m 6x10 (901/11)	M 1/4"G	M 1/4"G
S. 260	-	261/11	11m 8x12 (911/11)	M 1/4"G	M 1/4"G
	-	261/12	11m 6x10 (901/11)	M 1/4"G	M 1/4"G

## FIXED FOR SERVICE COLUMNS



## SWIVELLING ENCLOSED PAINTED STEEL



### Supplied with:

- polyurethane hose with brass coupling
- brass swivel joint
- "Viton" seals
- central shaft in "Delrin"
- inlet hose 1,5 m to connect the hose reel to the system



	P/N	P/N	Hose supplied	Connection	
				inlet	outlet
S. 250	42438/11	-	12m 8x12 (911/12)	M 3/8"G	M 1/4"G
	42438/12	-	10m 10x14,5 (921/10)	M 3/8"G	M 3/8"G
	-	42608/11	12m 8x12 (911/12)	M 3/8"G	M 1/4"G
	-	42608/12	10m 10x14,5 (921/10)	M 3/8"G	M 3/8"G
S. 300	-	43108/12	12m 8x12 (911/12)	M 3/8"G	M 1/4"G
	-	43108/13	15m 8x12 (911/16)	M 3/8"G	M 1/4"G
	-	43108/14	20m 8x12 (911/21)	M 3/8"G	M 1/4"G
	-	43108/15	12m 10x14,5 (921/12)	M 3/8"G	M 3/8"G
	-	43108/16	15m 10x14,5 (921/16)	M 3/8"G	M 3/8"G



Atex 94/9 II 3 GD c IIB TX (only for Series 250-300)

# Air, Detergent max 70°C 20 bar

## FIXED ENCLOSED STAINLESS STEEL AISI 304



### Supplied with:

- polyurethane hose with galvanized steel coupling
- stainless steel AISI 304 swivel joint
- "Viton" seals
- central shaft in "Delrin"
- inlet hose 1,5 m to connect the hose reel to the system



	P/N	Hose supplied	Connection	
			inlet	outlet
S. 250	42708/11	12m 8x12 (811/12)	M 3/8"G	M 1/4"G
	42708/12	10m 10x14,5 (821/101)	M 3/8"G	M 3/8"G
S. 300	43208/12	12m 8x12 (811/12)	M 3/8"G	M 1/4"G
	43208/13	15m 8x12 (811/16)	M 3/8"G	M 1/4"G
	43208/14	20m 8x12 (811/21)	M 3/8"G	M 1/4"G
	43208/15	12m 10x14,5 (821/12)	M 3/8"G	M 3/8"G
	43208/16	15m 10x14,5 (821/16)	M 3/8"G	M 3/8"G



Atex 94/9 II 3 GD c IIB TX

# Air, Water max 70°C 20 bar

For the SWIVELLING version add the suffix "/SO" at the P/N, For example: 268/10/SO

**FIXED PAINTED STEEL**



### Supplied with:

- polyurethane hose with galvanized steel coupling
- brass swivel joint
- "Viton" seals
- central shaft in galvanized steel or PA6 Nylon
- inlet hose from 0,6 m to 1 m to connect the hose reel to the system (standard on the versions with hose)

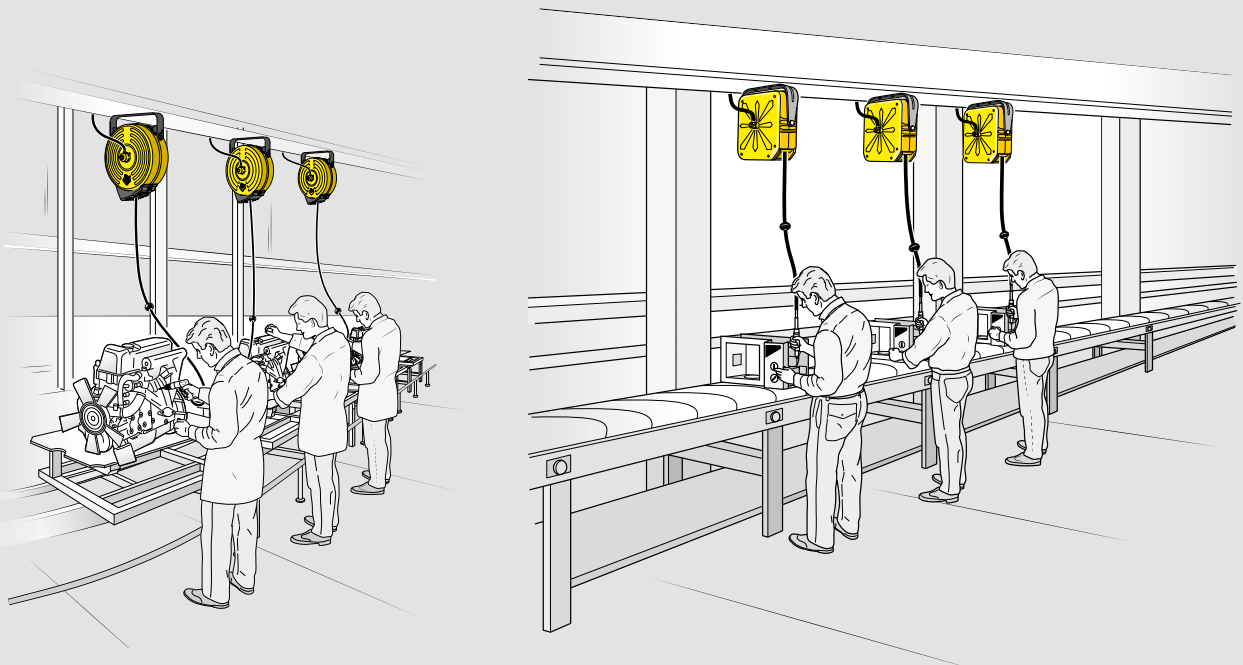


	P/N	Hose supplied	Connection	
			inlet	outlet
<b>S. 270</b>	268/10	without hose	M 3/8"G	F 3/8"G
	268/12	13m 10x14,5 (921/13)	M 3/8"G	M 3/8"G
	268/13	15m 8x12 (911/15)	M 3/8"G	M 1/4"G
	268/14	10m 6x10 (901/10)	M 3/8"G	M 1/4"G
	268/15	15m 6x10 (901/15)	M 3/8"G	M 1/4"G
<b>S. 300</b>	298/10	without hose	M 3/8"G	F 3/8"G
	298/12	15m 10x14,5 (921/15)	M 3/8"G	M 3/8"G
	298/13	18m 8x12 (911/18)	M 3/8"G	M 1/4"G
	298/14	8m 13x19 (961/8)	M 1/2"G	M 1/2"G
	298/15	12m 13x19 (961/12)	M 1/2"G	M 1/2"G
<b>S. 350</b>	348/10	without hose	M 3/8"G	F 3/8"G
	348/12	20m 10x14,5 (921/20)	M 3/8"G	M 3/8"G
	348/13	20m 8x12 (911/20)	M 3/8"G	M 1/4"G
	348/14	10m 13x19 (961/10)	M 1/2"G	M 1/2"G
	348/15	15m 13x19 (961/14)	M 1/2"G	M 1/2"G
<b>S. 430</b>	430/10	without hose	F 1/2"G	F 1/2"G
	428/11	10m 13x19 (961/11)	F 1/2"G	M 1/2"G
	428/12	15m 13x19 (961/15)	F 1/2"G	M 1/2"G



Atex 94/9 II 3 GD c X

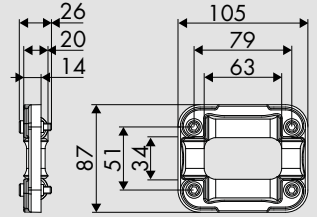
## USES





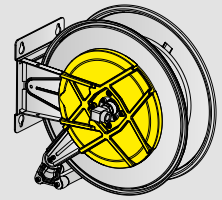
**P/N 260/05**

Hose guide with 4 opposed rollers for application of service columns in technopolymer.



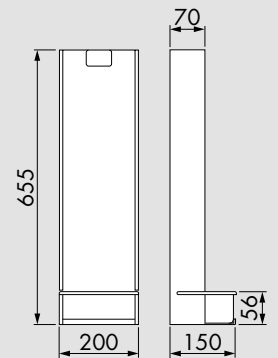
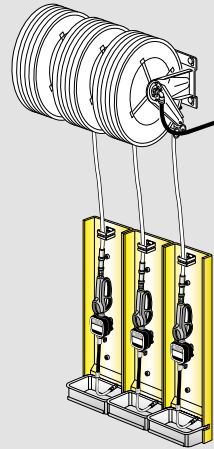
**P/N 430/08**

Latch mechanism protective cover rack or swivel joint side hose reels Series 430.



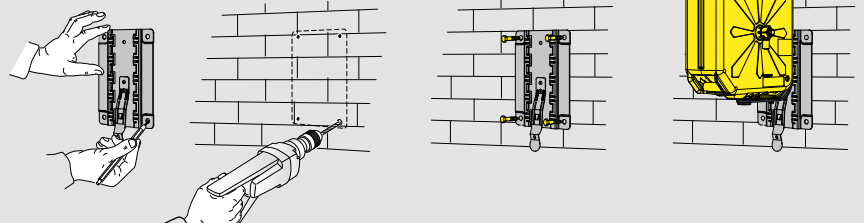
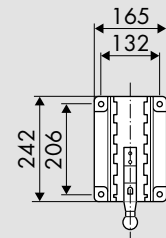
**P/N 900**

Modular drip-tray for hose reel: Equipped with gun hook and removable tray. Indispensable, applied under any hose-reel for holding the gun, and for keeping the wall and place clean and safe.



**P/N 260/01**

Bayonet bracket for hose reel Series 260.

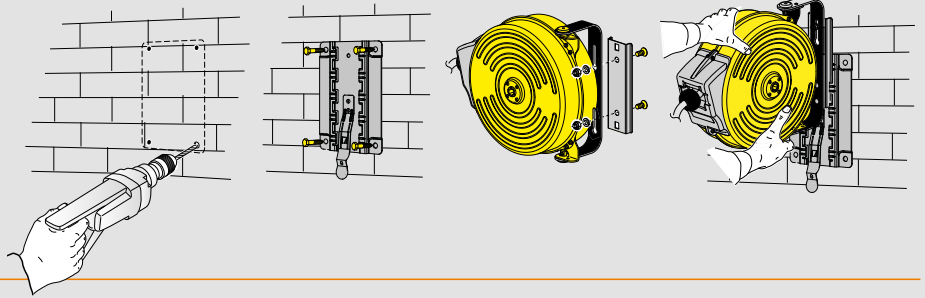
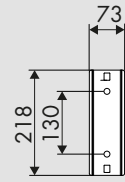


# Accessories



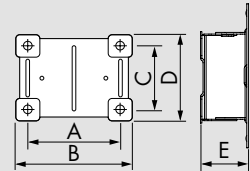
## P/N 260/02

Wall support for bayonet hooking for Series 250 - 300 enclosed.

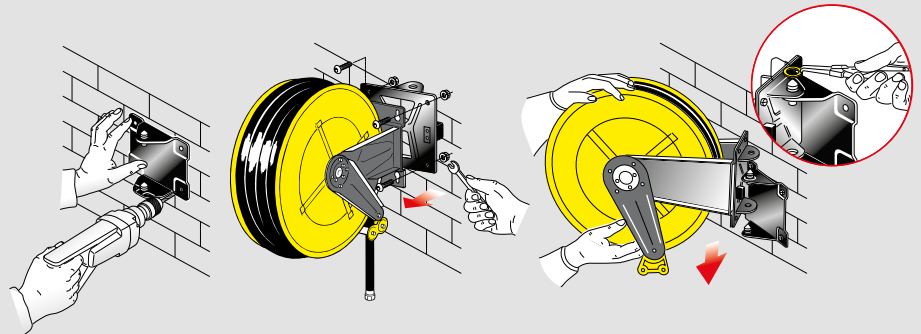


## P/N 430/05

Painted steel swivelling bracket in steel suitable for hose reels Series 270 - 300 - 350 - 430.

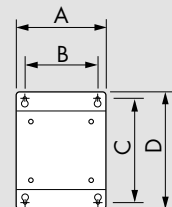


P/N	A	B	C	D	E
430/05	162	208	118	165	94

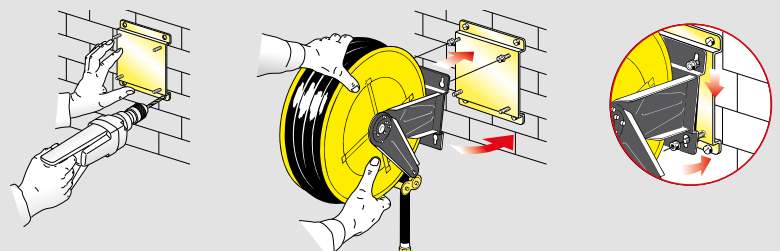


## P/N 430/01

Galvanized steel fixed bracket suitable for hose reels Series 270 - 300 - 350 - 430.



P/N	A	B	C	D
430/01	186	152	264	294



## Hose specifications

The range of hoses offered by ECODORA for its hose reels is in line with company's quality standards and guarantees excellent performance in the applications with the pressures specified in the catalogue. For conditions different from those recommended, ECODORA is available to appraise every aspect of the application context (compatibility of the materials used with the fluid, temperature of use, working pressure, etc.) together with the customer for identifying the right hose for each specific case.

The hoses mounted on the hose reels must support the max working pressure indicated on the label of each hose reels.





# Connection hoses

## Inlet connection hoses connecting hose reel to the system or to equipment

P/N	Length	Pressure	ø mm Inside - Outside	Connection		
				Inlet	Outlet	Material
821/015	1,5 m	3/8" - polyurethane - 20 bar	10 x 14,5	M 3/8"G	-	S. steel AISI 304
911/2	1,5 m	5/16" - polyurethane - 20 bar	8 x 12	M 1/4"G	swivel hose holder ø10	brass
921/2	1,5 m	3/8" - polyurethane - 20 bar	10 x 14,5	M 3/8"G	swivel hose holder F 3/8"G	brass
921/015	1,5 m	3/8" - polyurethane - 20 bar	10 x 14,5	M 3/8"G	swivel hose holder ø10	brass
961/2	1,5 m	1/2" - polyurethane - 20 bar	13 x 19	M 1/2"G	swivel hose holder ø13,5	brass

## Polyurethane hoses

### Air, Water max 40°C 20 bar

P/N	Length	Characteristics - Pressure	ø Inside - Outside	Connection		
				Inlet	Outlet	Material
911/12	12 m	5/16" - polyurethane - 20 bar	8 x 12	M 1/4"G	connection 90°	brass
911/16	15 m	5/16" - polyurethane - 20 bar	8 x 12	M 1/4"G	connection 90°	brass
911/21	20 m	5/16" - polyurethane - 20 bar	8 x 12	M 1/4"G	connection 90°	brass
921/10	10 m	3/8" - polyurethane - 20 bar	10 x 14,5	M 3/8"G	connection 90°	brass
921/12	12 m	3/8" - polyurethane - 20 bar	10 x 14,5	M 3/8"G	connection 90°	brass
921/16	15 m	3/8" - polyurethane - 20 bar	10 x 14,5	M 3/8"G	connection 90°	brass

### Air, Water max 70°C 20 bar

P/N	Length	Characteristics - Pressure	ø Inside - Outside	Connection		
				Inlet	Outlet	Material
901/10	10 m	1/4" - polyurethane - 20 bar	6 x 10	M 3/8"G	M 1/4"G	brass
901/11	11 m	1/4" - polyurethane - 20 bar	6 x 10	M 1/4"G	M 1/4"G	brass
901/15	15 m	1/4" - polyurethane - 20 bar	6 x 10	M 3/8"G	M 1/4"G	brass
911/11	11 m	5/16" - polyurethane - 20 bar	8 x 12	M 1/4"G	M 1/4"G	brass
911/15	15 m	5/16" - polyurethane - 20 bar	8 x 12	M 3/8"G	M 1/4"G	brass
911/18	18 m	5/16" - polyurethane - 20 bar	8 x 12	M 3/8"G	M 1/4"G	brass
911/20	20 m	5/16" - polyurethane - 20 bar	8 x 12	M 3/8"G	M 1/4"G	brass
921/13	15 m	3/8" - polyurethane - 20 bar	10 x 14,5	M 3/8"G	M 3/8"G	brass
921/15	15 m	3/8" - polyurethane - 20 bar	10 x 14,5	M 3/8"G	M 3/8"G	brass
921/20	20 m	3/8" - polyurethane - 20 bar	10 x 14,5	M 3/8"G	M 3/8"G	brass
961/8	8 m	1/2" - polyurethane - 20 bar	13 x 19	-	-	brass
961/10	10 m	1/2" - polyurethane - 20 bar	13 x 19	-	-	brass
961/11	10 m	1/2" - polyurethane - 20 bar	13 x 19	-	-	brass
961/12	12 m	1/2" - polyurethane - 20 bar	13 x 19	-	-	brass
961/14	15 m	1/2" - polyurethane - 20 bar	13 x 19	-	-	brass
961/15	15 m	1/2" - polyurethane - 20 bar	13 x 19	-	-	brass

### Air, Detergent max 70°C 20 bar

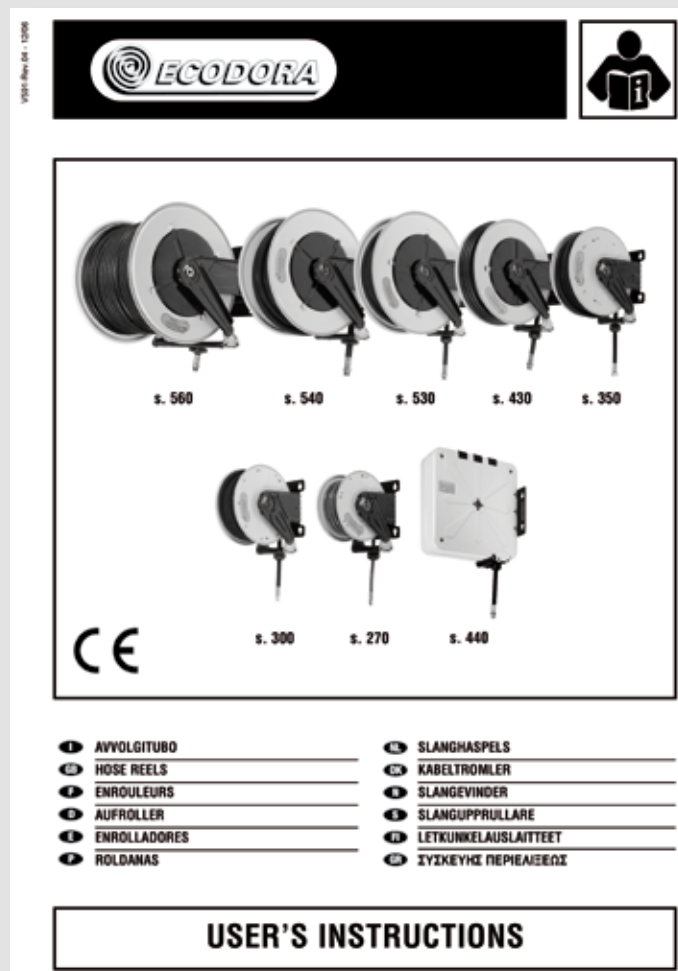
P/N	Length	Characteristics - Pressure	ø Inside - Outside	Connection		
				Inlet	Outlet	Material
811/12	12 m	5/16" - polyurethane - 20 bar	8 x 12	M 1/4"G	connection 90°	AISI 304
811/16	15 m	5/16" - polyurethane - 20 bar	8 x 12	M 1/4"G	connection 90°	AISI 304
811/21	20 m	5/16" - polyurethane - 20 bar	8 x 12	M 1/4"G	connection 90°	AISI 304
821/101	10 m	3/8" - polyurethane - 20 bar	10 x 14,5	M 3/8"G	connection 90°	AISI 304
821/12	12 m	3/8" - gomma nera - 20 bar	10 x 14,5	M 3/8"G	connection 90°	AISI 304
821/16	15 m	3/8" - gomma nera - 20 bar	10 x 14,5	M 3/8"G	connection 90°	AISI 304

## Guide to ordering spare parts

You can easily make your spare parts orders by consulting **Ecodora Spare Parts Catalogue** illustrating for each model of hose reel the **exploded view of each item and spare parts guide**.

The **spare parts guide** is subdivided in 3 columns:

- ▶ List of spare parts kit (code KR) : a KR includes a group of selected parts shown with the same colour in the exploded view; the spare parts composing the kit can't be supplied separately except those with a proper code indicated in the exploded view.
  - ▶ List of spare parts that can be supplied separately.
  - ▶ Joints gaskets list shown on the exploded view.
- ⚠ Attention: check carefully swivel joint and pressure indicated on the label to order the suitable gaskets depending on type of utilisation.



**Each Hose Reel package contain User's Instructions.**

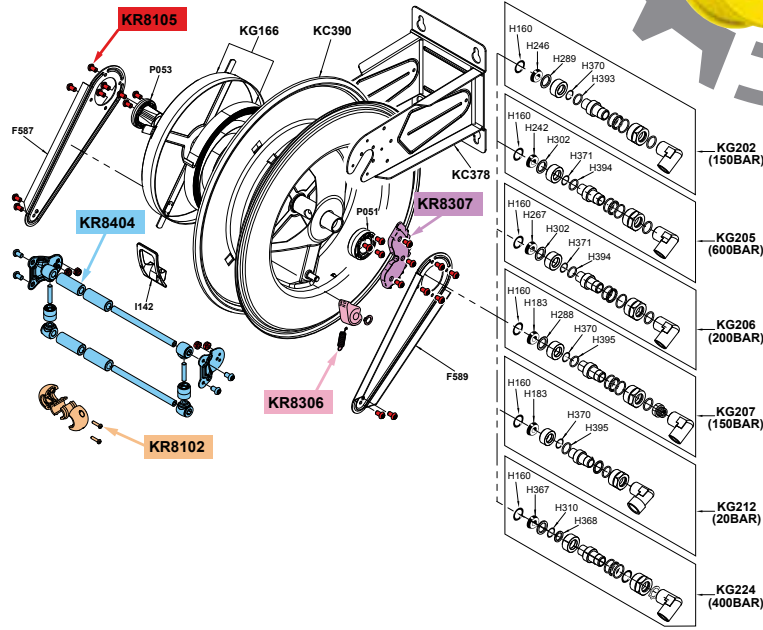


P/N 430/10 Mod. 430-20 bar  
 P/N 430/20 Mod. 430-100 bar  
 P/N 430/30 Mod. 430-200 bar

P/N 430/35 Mod. 430-400 bar  
 P/N 430/40 Mod. 430-150 bar  
 P/N 430/50 Mod. 430-600 bar

5. 430 industriale verniciata - 5. 430 industrial painted

Exploded view



### GUIDA RICAMBI - SPARE PARTS GUIDE

Spare parts guide

#### KIT RICAMBI

COGNI KIT SOTTO RIPORTATO COMPRENDE I RICAMBI EVIDENZIATI CON LO STESSO COLORE E LE RELATIVE GUARNIZIONI. QUESTI RICAMBI NON SONO FORNIBILI SEPARAZIAMENTE TRanne QUELLI CODIFICATI.

#### SPARE PARTS KITS

EACH KIT SHOWN WITH THE SAME COLOUR INCLUDES ALSO THE GASKETS. THE SPARE PARTS COMPOSING THE KIT CAN'T BE SUPPLIED SEPARATELY EXCEPT THOSE SHOWN WITH A PROPER CODE.

CODICE CODE	DESCRIZIONE DESCRIPTION	Q.TÀ Q.TY
KR8102	TAMPONE FERMATUBO HOSE STOP	1
KR8105	SET VITI AVVOLGITUBO HOSE REEL SCREWS KIT	1
KR8306	DENTE DI ARRESTO DETENT	1
KR8307	KIT CREMAGLIERA BACK KIT	1
KR8404	KIT PORTA RULLI AVVOLGITUBO ROLLERS HOLDING KIT FOR HOSE REEL	1

#### ELENCO RICAMBI FORNIBILI SINGOLARMENTE

LIST OF SPARE PARTS WHICH CAN BE SUPPLIED SEPARATELY

CODICE CODE	DESCRIZIONE DESCRIPTION	Q.TÀ Q.TY
F587	BRACCIO ORIENTABILE ADJUSTABLE ARM	1
F589	BRACCIO ORIENTABILE ADJUSTABLE ARM	1
I142	INSERTO FORO USCITA TUBO HOSE OUTLET PROTECTION	1
KC378	SUPPORTO AVVOLGITUBO HOSE REEL SUPPORT	1
KC390	TAMBURO AVVOLGITUBO HOSE REEL DRUM	1
KG166	CARTER MOLLA COVER SPRING GROUP	1
KG202	SNODO AVVOLGITUBO HOSE REEL JOINT	1
KG205	SNODO AVVOLGITUBO HOSE REEL JOINT	1
KG206	SNODO AVVOLGITUBO HOSE REEL JOINT	1
KG207	SNODO AVVOLGITUBO HOSE REEL JOINT	1
KG212	SNODO AVVOLGITUBO HOSE REEL JOINT	1
KG224	SNODO AVVOLGITUBO HOSE REEL JOINT	1
P051	BOCCOLA LATO CREMAGLIERA RACK SIDE BUSH	1
P053	BOCCOLA LATO MOLLA SPRING SIDE BUSH	1

#### ELENCO GUARNIZIONI SNODI JOINTS GASKETS LIST

CODICE CODE	DESCRIZIONE DESCRIPTION	Q.TÀ Q.TY
H160	O-RING 2093	1
H183	GUARNIZIONE GASKET	1
H242	GUARNIZIONE GASKET	1
H246	GUARNIZIONE GASKET	1
H267	GUARNIZIONE "VITON" 90SH GASKET "VITON" 90SH	1
H288	RONDELLA IN "PIFE" WASHER "PIFE"	1
H289	RONDELLA IN "PIFE" WASHER "PIFE"	1
H302	RONDELLA IN "PIFE" WASHER "PIFE"	1
H310	O-RING 112 "VITON"	1
H367	GUARNIZIONE GASKET	1
H368	RONDELLA IN "PIFE" WASHER "PIFE"	1
H370	O-RING 2042 "VITON"	1
H371	O-RING 2037 "VITON"	1
H393	RONDELLA IN "PIFE" WASHER "PIFE"	1
H394	RONDELLA IN "PIFE" WASHER "PIFE"	1
H395	RONDELLA IN "PIFE" WASHER "PIFE"	1

First list:

KR=spare parts kit

Second list:

spare parts with a proper code that it is possible to order separately

Third list:

joints gaskets list on the exploded view

tutti i diritti riservati - all rights reserved

# Index P/N for fixed hose reels

P/N	Page	P/N	Page	P/N	Page
<b>260/01</b>	22	<b>42708/11</b>	20	<b>901/10</b>	21-25
<b>260/02</b>	22	<b>42708/12</b>	20	<b>901/11</b>	25
<b>260/05</b>	22	<b>428/11</b>	21	<b>901/15</b>	25
<b>260/11</b>	20	<b>428/12</b>	21	<b>911/11</b>	25
<b>260/12</b>	20	<b>430/01</b>	22	<b>911/12</b>	25
<b>261/11</b>	20	<b>430/05</b>	22	<b>911/15</b>	25
<b>261/12</b>	20	<b>430/08</b>	22	<b>911/16</b>	26
<b>268/10</b>	21	<b>430/10</b>	21	<b>911/18</b>	25
<b>268/12</b>	21	<b>43108/12</b>	20	<b>911/2</b>	25
<b>268/13</b>	21	<b>43108/13</b>	20	<b>911/20</b>	25
<b>268/14</b>	21	<b>43108/14</b>	20	<b>911/21</b>	25
<b>268/15</b>	21	<b>43108/15</b>	20	<b>921/015</b>	25
<b>298/10</b>	21	<b>43108/16</b>	20	<b>921/10</b>	10
<b>298/12</b>	21	<b>43208/12</b>	20	<b>921/12</b>	25
<b>298/13</b>	21	<b>43208/13</b>	20	<b>921/13</b>	25
<b>298/14</b>	21	<b>43208/14</b>	20	<b>921/15</b>	25
<b>298/15</b>	21	<b>43208/15</b>	20	<b>921/16</b>	25
<b>348/10</b>	21	<b>43208/16</b>	20	<b>921/2</b>	25
<b>348/12</b>	21	<b>811/12</b>	25	<b>921/20</b>	25
<b>348/13</b>	21	<b>811/16</b>	25	<b>961/10</b>	25
<b>348/14</b>	21	<b>811/21</b>	25	<b>961/11</b>	25
<b>348/15</b>	21	<b>821/015</b>	25	<b>961/12</b>	25
<b>42438/11</b>	20	<b>821/101</b>	25	<b>961/14</b>	25
<b>42438/12</b>	20	<b>821/12</b>	25	<b>961/15</b>	25
<b>42608/11</b>	20	<b>821/16</b>	25	<b>961/2</b>	25
<b>42608/12</b>	20	<b>900</b>	22	<b>961/8</b>	25

