



CE Made in Italy



HOSE REELS CATALOGUE
TECHNOLOGY FOR FLUIDYNAMICS

No. E14/A1

The complete range of our products is presented in the specific catalogues:

- HOSE REELS CATALOGUE No. E14/A2
 - HOSE REELS CATALOGUE No. E14/A3
 - OIL CATALOGUE No. E14/LO
 - GREASE CATALOGUE No. E14/LG
 - DIAPHRAGM PUMPS CATALOGUE No. 2013/M
 - DIGITAL METER AND PULSER
 - FLUID CONTROL SYSTEM
-



HELP THE NATURE

Packaging contains, depending on the articles, one or more of the following materials; they must be recycled in accordance with current regulations in the country of use.

cardboard • polyethylene sack • polystyrene • paper • wood • nails
• plastic strap • cellophane • clips • gummed paper





OUR STRENGTHS

The widest range of hose reels designed to meet all the needs of our clients, even the most specific.

The quality, reliability and design that have always distinguished the Ecodora brand in the global market.

The research and development as a flagship of our company to always offer cutting-edge solutions.

A technical service before and after sales to recommend the most suitable product according to the customer's needs as well as to provide support to the end users.

OUR GOALS

To develop a long lasting cooperation with our customers by listening to their needs and their expectations.

To meet every user's need by offering only high quality products.

www.ecodora.com
info@ecodora.com

CE Made in Italy

Ecodora presents its wide range of hose reels for fluids

Automatic hose reels with constant strength spring, open and enclosed, fixed and swivelling versions available, made in painted steel, stainless steel AISI 304, AISI 316 and in composite technopolymer materials.

Others hose reels families with manual or motorized rewinding (with hydraulic, pneumatic or electric motor) are described in a proper catalogue.

Sturdy and compact, **Ecodora** hose reels allow **to manage** any kind of flexible hoses in a practical and safest way for transferring every type of fluids.

When in use, hose reels allow **to unwind** quickly and easily only the desired length of hose. After use, the unwound hose can be **re-wound** immediately by keeping an orderly workplace free of hindrances, thus improving functionality and safety, and **safeguarding** hoses against wear and breakage too.



aviation



agriculture



building



foundries



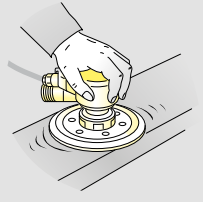
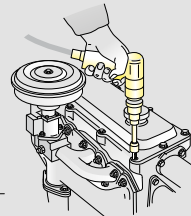
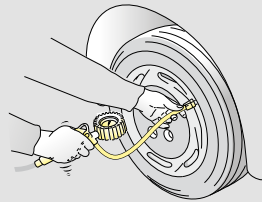
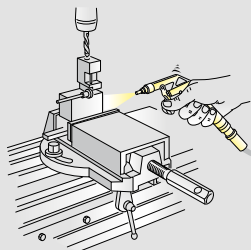
armed forces



marine

Hose Reels Applications

Ecodora hose reels have an excellent versatility and can be used for most applications including industries, workshops, service stations, garages, agriculture, building, and many others; with their use you can transferring fluids such as: **oil, air, water, grease, oxygen-acetylene, fuel, gas, etc.**



mining



woodworking



general industries



food industries



service stations



oil-refinery

Index for Series



HOSE REEL SERIES 270-300-350
PAINTED STEEL - STAINLESS STEEL AISI 304

from page **8 to 11**



HOSE REEL SERIES 430-530-540
PAINTED STEEL - STAINLESS STEEL AISI 304

from page **12 to 15**



HOSE REEL SERIES 430-530-540-560
STAINLESS STEEL AISI 316

from page **16 to 19**



HOSE REEL SERIES 560
PAINTED STEEL - STAINLESS STEEL AISI 304

from page **20 to 23**



HOSE REEL SERIES 440 - 4440 ABS

from page **24 to 27**



HOSE REEL SERIES 4430 ABS
PAINTED STEEL - STAINLESS STEEL AISI 304

from page **28 to 31**

Index for Fluid

AIR, WATER 20 bar	page	32
AIR, WATER 10 bar Hygienic hose	page	33
WATER MAX 130°C 100 bar	page	34
WATER MAX 130°C 100 bar Hygienic hose	page	35
WATER MAX 130°C 200 bar	page	36
WATER MAX 130°C 200 bar Hygienic hose	page	37
WATER MAX 130°C 400-700 bar	page	38
WATER MAX 130°C 400 bar Hygienic hose	page	39
OIL AND SIMILAR 50 - 100 - 150 bar	page	40
GREASE 400-600 bar	page	41
DIESEL FUEL 10 bar	pag.	42
AD BLUE 10 bar	page	42
WELDING 20 bar	page	43
LPG - METHANE 10 bar	page	44
WASTE OIL SUCTION	page	44
DOUBLE INLET AND OUTLET	page	45
WATER MAX 130°C 100-200-400 bar AISI 304	page	46
WATER MAX 130°C 100 bar AISI 316	page	47
ENCLOSED IN PAINTED STEEL OR ABS 20-150-400 bar	page	48
OTHERS FLUIDS - COMPATIBILITY TABLE	page	60
ACCESSORIES	page	49 to 50
HOSE	page	51 to 58



Series



S. 270

S. 300

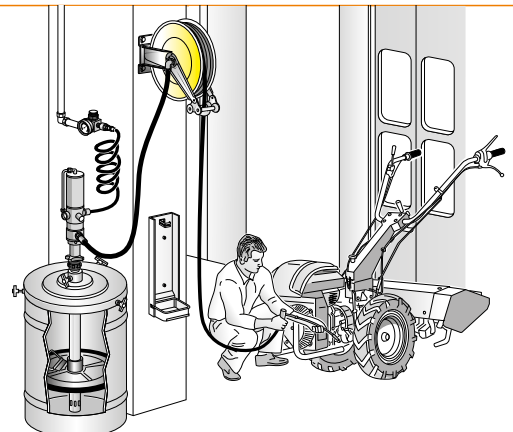
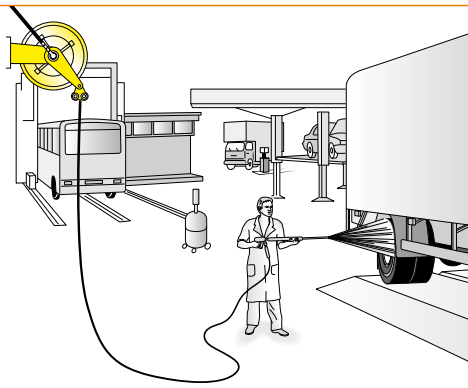
S. 350

Resistant with the corrosion: all the components are painted (painting with epoxy powder coating, thickness min. 80µ), or finished with a galvanic treatment, ideal to work externally.
Easy to install everywhere, like for example on the wall, on the floor, on the ceiling and on the vehicles.

Fluid - Pressure	PAINTED STEEL			STAINLESS STEEL AISI 304		
	Swivel joint	Seals	Central shaft	Swivel joint	Seals	Central shaft
Air, Water 20 bar	brass	Viton	galvanised steel	brass	Viton	stainless steel AISI 304
Water max 130°C 100 bar	stainless steel AISI 304	Viton	galvanised steel	stainless steel AISI 304	Viton	stainless steel AISI 304
Water max 130°C 200 bar	stainless steel AISI 304	Viton	galvanised steel	stainless steel AISI 304	Viton	stainless steel AISI 304
Water max 130°C 400 bar	stainless steel AISI 304	Teflon	galvanised steel	stainless steel AISI 304	Teflon	stainless steel AISI 304
Oil and similar 150 bar	galvanised steel	Polyurethane	galvanised steel	stainless steel AISI 304	Viton	stainless steel AISI 304
Grease 400-600 bar	galvanised steel	Polyurethane	galvanised steel	galvanised steel	Polyurethane	stainless steel AISI 304
GPL, Metano 20 bar	brass	Viton	galvanised steel	-	-	-

⚠ Attention: Series 270 is used only for Air, Water 20 bar

USES



Series 270 - 300 - 350

STAINLESS STEEL AISI 304 Fixed - Swivelling



S. 270



S. 300



S. 350

Suggested for aggressive workplace or in application with use of water. The electrolytic polishing surface treatment helps the elimination of the surface impurities, increases the average life of the hose reel and improves its appearance.

According to the model, they are compliant at the following Atex legislation:

Atex 94/9 II 3GD c X
Atex 94/9 II 3GD c (T5) T100°C X



Solid and compact **fixed painted steel bracket** with 4 slotted mounting holes for easy and safe installation.

Adjustable guide arms allows delivery hose going out at the desired location depending on hose reel installation.

Adjustable hose stop.

Large and **multidirectional roller guide** with self lubricating hose guide rollers.

Automatic block system built with material compliant with Atex legislation, it allows the block of the hose at the desired measure.

Drum support bushings in TENAXID®, self lubricating, material resistant against corrosion.

The **drum**, in painted steel or in stainless steel AISI 304, is sturdy and practical, with beads to reinforce the structure and rounded border.

Automatic with constant **strength spring** completely enclosed protected and lubricated inside the reel. Tested to resist more than 20000 cycles.*

Swivel joint with ideal internal dimensions to guarantee the most possible flow. It is realized, depending on the model, in brass, galvanize steel and stainless steel AISI 304, with seals in Polyurethane, Viton and Teflon.

* A cycle is composed by a number of rotations in one direction and the same in the opposite direction. The number of rotations depends on the spring model. This allows to simulate the rewinding and unwinding of a hose with its maximum length.

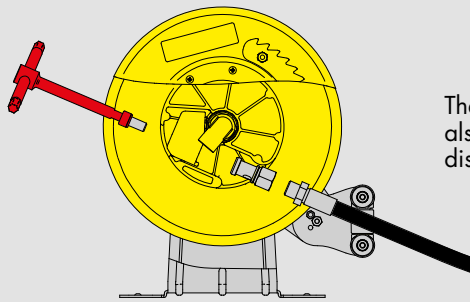
Hose reel capacity

Hose external diameter	Hose reel series		
	270	300	350
ø 12 mm	length max. 16 m	length max. 18 m	length max. 22 m
ø 14 mm	length max. 14 m	length max. 16 m	length max. 20 m
ø 15 mm	length max. 12 m	length max. 14 m	length max. 18 m
ø 16 mm	length max. 10 m	length max. 12 m	length max. 18 m
ø 17 mm	-	length max. 12 m	length max. 17 m

Hose reel outlet hose connection

Series	Inlet	Outlet	Inlet *	Outlet *
270	F 3/8" - F 1/2"	F 3/8" - F 1/2"	M 3/8" L-H	M 3/8" L-H
300	F 3/8" - F 1/2"	F 3/8" - F 1/2"	M 3/8" L-H	M 3/8" L-H
350	F 3/8" - F 1/2"	F 3/8" - F 1/2"	M 3/8" L-H	M 3/8" L-H

* for LPG - Methane L-H: left hand thread

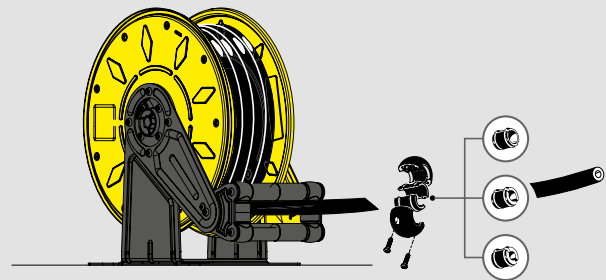


The hose reel structure is designed also to facilitate the mounting and the disassembly of the hose.

Universal hose stop

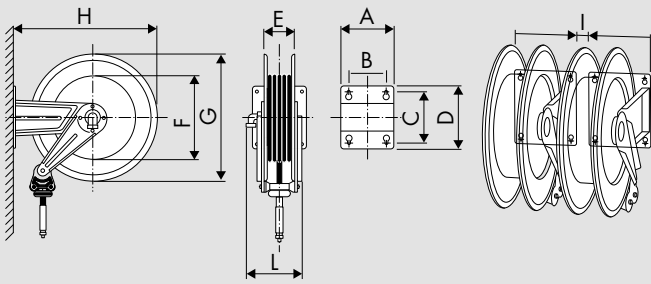
The universal hose stop is just mounted in all models with hose. The models without hose come, together with the hose stop, with some adaptors for hoses of different sizes.

Following table summarizes the internal diameters of the hose stop available for all the series.



Fluid - Pressure	Series 270 ø (mm)	Series 300 ø (mm)	Series 350 ø (mm)
Air, Water 20 bar	12-14-16-19	12-14-16-19	12-14-16-19
Water max 130°C 100 bar	-	12-14-16-19	12-14-16-19
Water max 130°C 200 bar	-	12-14-16-19	12-14-16-19
Water max 130°C 400 bar	-	12-14-16-19	12-14-16-19
Oil and similar 150 bar	-	12-14-16-19	12-14-16-19
Grease 400-600 bar	-	12-14-16-19	12-14-16-19
GPL, Metano 20 bar	-	12-14-16-19	12-14-16-19

Overall dimensions (mm)



Series	A	B	C	D	E	F	G	H	I	L	1-m ³	Kg*
270	186	140	196	226	110	240	300	320	20	210	0,037	from 10 to 13
300	186	140	196	226	110	280	350	365	20	215	0,045	from 11 to 16
350	186	140	196	226	110	280	390	410	20	215	0,068	from 13 to 19,5

* Packing is included in the weight

Hose reel installation

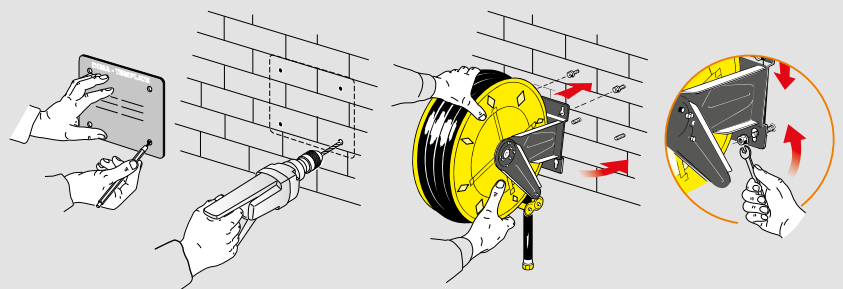
The adjustable arms can be easily repositioned according to needs

Standard wall installation	Optional wall installation	Bench installation	Ceiling installation
<p>1</p>	<p>2</p>	<p>3</p>	<p>4</p>
<p>To switch from 1 to 2 configuration is necessary to follow this simple procedure</p>			
Starting position	Unlock fixing arms screws	Arms rotation	Final position
			<p>Hose reel rotation of 180°</p>

Wall mounting

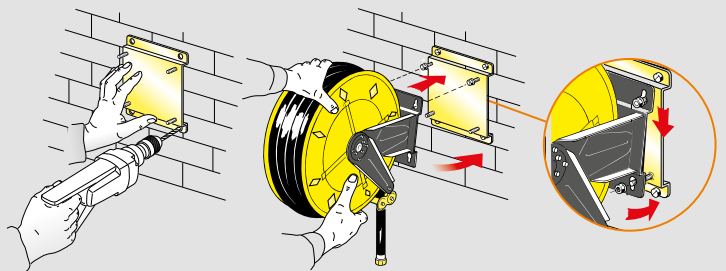
TEMPLATE

The solid and compact fixed bracket, included with the hose reel, is provided with four slotted mounting holes for easy and safe installation. Using the template supplied with the hose reel it's easier to mark plugs holes for hose reel fixing.



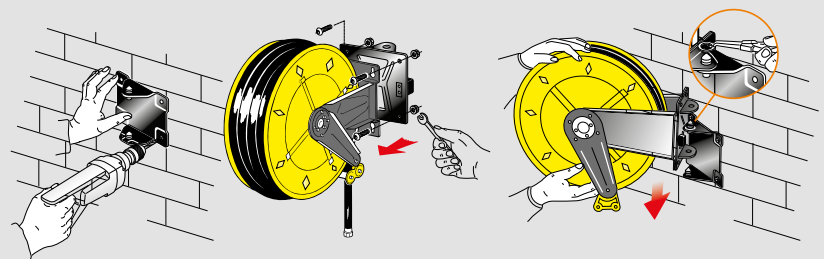
FIXED BRACKET

On request an additional bracket for a quick installation and disassembly is available. Furthermore this bracket allows installing several hose reels in series. The P/N takes the suffix /SM. For example: 300/10 becomes 300/10/SM.



SWIVELLING BRACKET

On request a swivelling bracket to make the reel turning 40° to the right and 40° to the left is available. The P/N takes the suffix /SO. For example: 300/10 becomes 300/10/SO.



Series



Resistant with the corrosion: all the components are painted (painting with epoxy powder coating, thickness min. 80µ), or finished with a galvanic treatment, ideal to work externally.
Easy to install everywhere, like for example on the wall, on the floor, on the ceiling and on the vehicles.

Fluid - Pressure	PAINTED STEEL			STAINLESS STEEL AISI 304		
	Swivel joint	Seals	Central shaft	Swivel joint	Seals	Central shaft
Air, Water 10 bar	-	-	-	brass	Viton	stainless steel AISI 304
Air, Water 20 bar	brass	Viton	galvanised steel	brass	Viton	stainless steel AISI 304
Water max 130°C 100 bar	stainless steel AISI 304	Viton	galvanised steel	stainless steel AISI 304	Viton	stainless steel AISI 304
Water max 130°C 200 bar	stainless steel AISI 304	Viton	galvanised steel	stainless steel AISI 304	Viton	stainless steel AISI 304
Water max 130°C 400 - 700 bar	stainless steel AISI 304	Teflon	galvanised steel	stainless steel AISI 304	Teflon	stainless steel AISI 304
Oil and similar 50-100-150 bar	galvanised steel	Polyurethane	galvanised steel	stainless steel AISI 304	Viton	stainless steel AISI 304
Suction waste oil	galvanised steel	Polyurethane	galvanised steel	stainless steel AISI 304	Viton	stainless steel AISI 304
Grease 400 bar	galvanised steel	Polyurethane	galvanised steel	galvanised steel	Polyurethane	stainless steel AISI 304
Diesel fuel 10 bar	brass	Viton	galvanised steel	brass	Viton	stainless steel AISI 304
Ad blue 10 bar	stainless steel AISI 304-316L	Viton	stainless steel AISI 304-316L	stainless steel AISI 304-316L	Viton	stainless steel AISI 304-316L
GPL, Metano 20 bar	brass	Viton	galvanised steel	-	-	-
Welding 20 bar	brass	Viton	galvanised steel	-	-	-
Air, Water 20 bar double inlet and outlet	brass	Viton	galvanised steel	brass	Viton	stainless steel AISI 304
Oil, Water 200 bar double inlet and outlet	stainless steel AISI 304	Viton	galvanised steel	-	-	-
Oil, Paint 200 bar double inlet and outlet	galvanised steel	Polyurethane	galvanised steel	-	-	-
Oil and similar 400 bar double inlet and outlet	galvanised steel	Polyurethane	galvanised steel	stainless steel AISI 304	Viton	stainless steel AISI 304

Series 430 - 530 - 540

STAINLESS STEEL AISI 304 Fixed - Swivelling



Suggested for aggressive workplace or in application with use of water. The electrolytic polishing surface treatment helps the elimination of the surface impurities, increases the average life of the hose reel and improves its appearance.

According to the model, they are compliant at the following Atex legislation:

Atex 94/9 IIB 2GD c T4 T135°C X
Atex 94/9 II 3GD c (T5) 100°C X
Atex 94/9 II 3GD c X



Solid and compact **fixed painted steel bracket** with 4 slotted mounting holes for easy and safe installation.

Adjustable guide arms allows delivery hose going out at the desired location depending on hose reel installation.

Adjustable hose stop.

Large and **multidirectional roller guide** with self lubricating hose guide rollers.

Automatic block system built with material compliant with Atex legislation, it allows the block of the hose at the desired measure.

Drum support bushings in TENAXID®, self lubricating, material resistant against corrosion.

The **drum**, in painted steel or in stainless steel AISI 304, is sturdy and practical, with beads to reinforce the structure and rounded border.

Automatic with constant **strength spring** completely enclosed protected and lubricated inside the reel. Tested to resist from 15000 to 20000 cycles.*

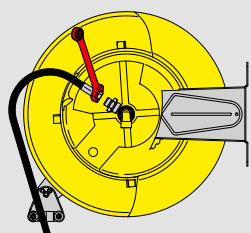
Swivel joint with ideal internal dimensions to guarantee the most possible flow. It is realized, depending on the model, in brass, galvanize steel and stainless steel AISI 304, with seals in Polyurethane, Viton and Teflon.

* A cycle is composed by a number of rotations in one direction and the same in the opposite direction. The number of rotations depends on the spring model. This allows to simulate the rewinding and unwinding of a hose with its maximum length.

Hose reel capacity

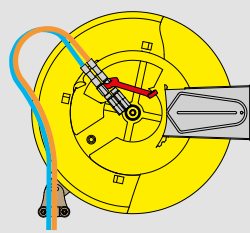
Hose external diameter	Hose reel series		
	430	530	540
ø 17 mm	length max. 21 m	length max. 28 m	-
ø 19,5 mm	length max. 16 m	length max. 26 m	-
ø 22 mm	length max. 14 m	length max. 24 m	length max. 30 m
ø 28 mm	-	-	length max. 22 m
ø 34 mm	-	-	length max. 17 m
ø 13 + 13 mm	length max. 13 m	length max. 22 m	length max. 37 m
ø 15 + 15 mm	length max. 12 m	length max. 20 m	length max. 35 m
ø 16 + 16 mm	length max. 10 m	length max. 15 m	length max. 27 m

Hose reel outlet hose connection



For hoses up to 1/2"		
Series	Inlet	Outlet
430	F 3/8"-1/2"	F 1/2"
430 *	M 3/8" LH	M 3/8" LH
530	F 3/8"-1/2"	F 1/2"
530 *	M 3/8" LH	M 3/8" LH
540	F 3/8"-1/2"	F 1/2"
540 *	M 3/8" LH	M 3/8" LH

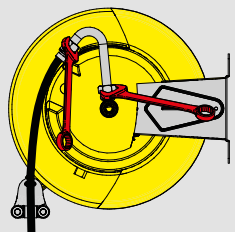
* for LPG - Methane L-H: left hand thread



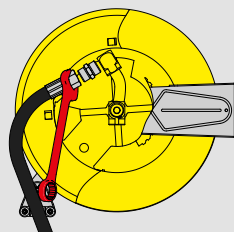
For double hoses		
Series	Inlet	Outlet
430 *	M 3/8"	M 3/8"
430 **	F 3/8"-1/2"	M 3/8"
530 *	M 3/8"	M 3/8"
530 **	F 3/8"-1/2"	M 3/8"
540 *	M 3/8"	M 3/8"
540 **	F 3/8"-1/2"	M 3/8"

* welding hose reel has the connection thread Left for acetylene and Right for oxygen

** for double inlet the thread is Right



For hoses from 3/4" to 5/8"		
Series	Inlet	Outlet
430	F 1/2"	M 1/2"

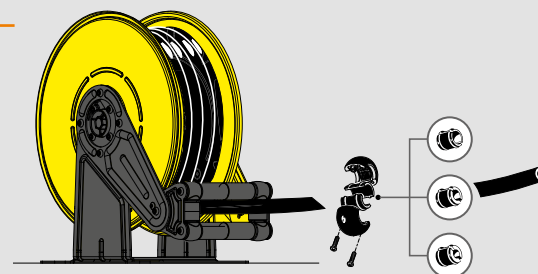


For hoses from 3/4" to 1"		
Series	Inlet	Outlet
430	F 1"	F 3/4"
530	F 1"	F 3/4" - 1"
540	F 1"	F 1"

Universal hose stop

The universal hose stop is just mounted in all models with hose. The models without hose come, together with the hose stop, with some adaptors for hoses of different sizes.

Following table summarizes the internal diameters of the hose stop available for all the series.

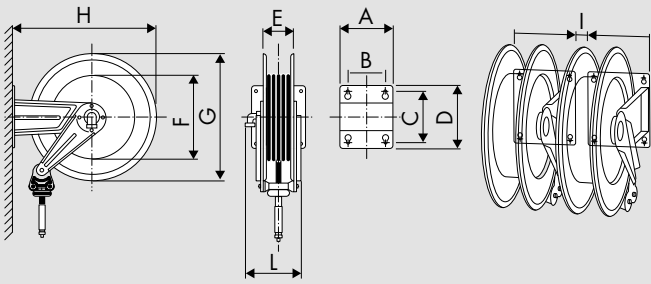


Fluid - Pressure	Series 430 (ø mm) for hoses up to 1/2"	Series 530 (ø mm) for hoses up to 1/2"	Series 530 (ø mm) for hoses from 3/4" to 1"	Series 540 (ø mm) for hoses up to 1/2"	Series 540 (ø mm) for hoses from 3/4" to 1"
Air, Water 10-20 bar	14-17-19-26	14-17-19-26	-	14-17-19-26	24,5-34
Water max 130°C 100 bar	14-17-19-26	14-17-19-26	-	14-17-19-26	24,5-34
Water max 130°C 200 bar	14-17-19-26	14-17-19-26	-	14-17-19-26	-
Water max 130°C 400 bar	14-17-19-26	14-17-19-26	-	14-17-19-26	-
Oil and similar 50-100-150 bar	14-17-19-26	14-17-19-26	24,5-34	14-17-19-26	24,5-34
Suction waste oil	14-17-19-26	-	-	-	-
Grease 400 bar	14-17-19-26	14-17-19-26	-	14-17-19-26	-
GPL, Metano 20 bar	12-14-16	12-14-16	-	12-14-16	-

Fluid - Pressure	Series 430 (ø mm) for hoses from 5/8" to 3/4"	Series 530 (ø mm) for hoses from 5/8" to 3/4"	Series 540 (ø mm) for hoses from 3/4" to 1"
Ad blue 10 bar	14-17,5-21-24,5-28-30-34	14-17,5-21-24,5-28-30-34	-
Diesel Fuel 10 bar	14-17-19-26	14-17-19-26	24,5-34

Fluid - Pressure	Series 430 (ø mm) for double hoses	Series 530 (ø mm) for double hoses	Series 540 (ø mm) for double hoses
Welding 20 bar	12-14-15-16	12-14-15-16	12-14-16
Air, Water 20 bar	12-14-15-16	12-14-15-16	12-14-16
Oil, Water 200 bar	12-14-15-16	12-14-15-16	-
Oil, Paint 200 bar	12-14-15-16	12-14-15-16	-
Oil and similar 400 bar	14-17-19	24,5-34	24,5-34

Overall dimensions (mm)



Series	A	B	C	D	E	F	G	H	I	L	1-m ³	Kg*
430	186	140	196	226	115	261	420	460	20	215	0,098	from 16 to 22,5
530	203	153	220	258	115	328	510	560	20	230	0,120	from 22 to 31,5
540	300	218	228	268	190	316	510	573	0	310	0,175	from 30 to 50

* Packing is included in the weight

Hose reel installation

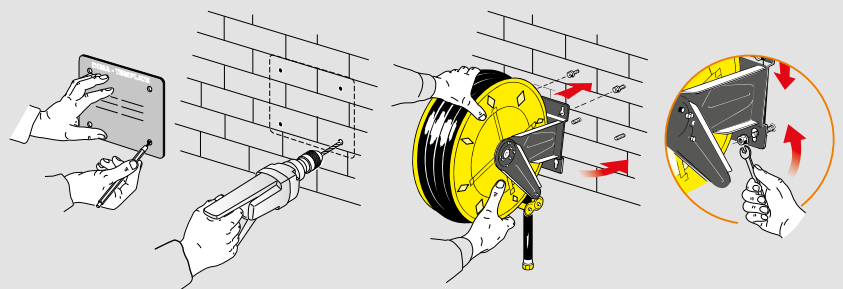
The adjustable arms can be easily repositioned according to needs

Standard wall installation	Optional wall installation	Bench installation	Ceiling installation
<p>1</p>	<p>2</p>	<p>3</p>	<p>4</p>
<p>To switch from 1 to 2 configuration is necessary to follow this simple procedure</p>			
Starting position	Unlock fixing arms screws	Arms rotation	Final position
			<p>Hose reel rotation of 180°</p>

Wall mounting

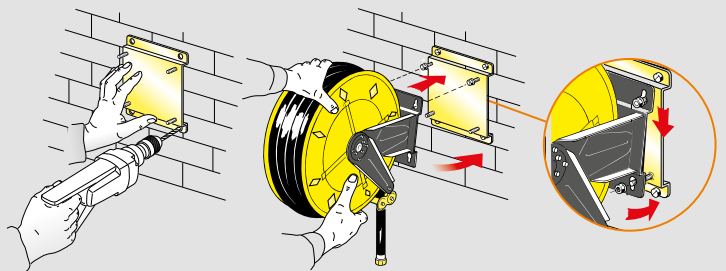
TEMPLATE

The solid and compact fixed bracket, included with the hose reel, is provided with four slotted mounting holes for easy and safe installation. Using the template supplied with the hose reel it's easier to mark plugs holes for hose reel fixing.



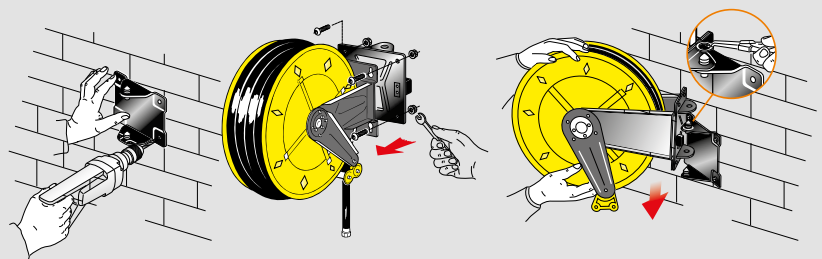
FIXED BRACKET

On request an additional bracket for a quick installation and disassembly is available. Furthermore this bracket allows installing several hose reels in series. The P/N takes the suffix /SM. For example: 430/10 becomes 430/10/SM.



SWIVELLING BRACKET

On request a swivelling bracket to make the reel turning 40° to the right and 40° to the left is available. The P/N takes the suffix /SO. For example: 430/10 becomes 430/10/SO.



Series



S. 430

S. 530



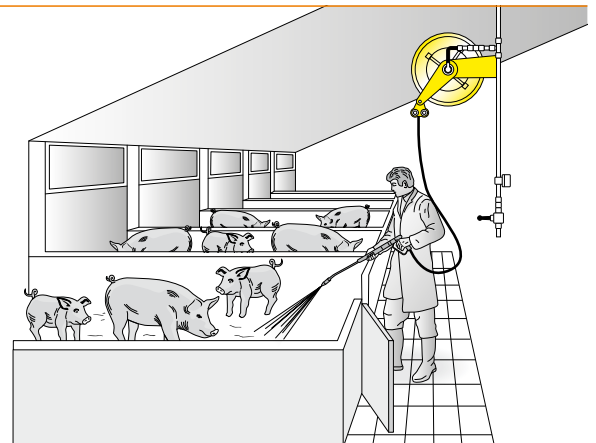
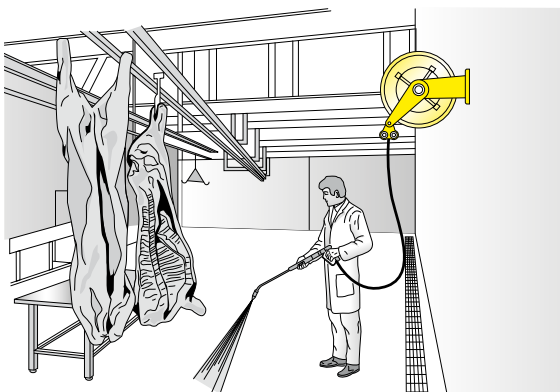
**430-530
540-560**
Aisi 316



For very aggressive workplace we suggest hose reel in stainless steel AISI 316, that guarantees greater resistance than other materials. The electrolytic polishing surface treatment helps the elimination of the surface impurities, increases the average life of the hose reel and improves its appearance.

Fluid - Pressure	STAINLESS STEEL AISI 316		
	Swivel joint	Seals	Central shaft
Water max 130°C 100 bar	stainless steel AISI 316	Viton	stainless steel AISI 316

USES



Series 540 - 560

STAINLESS STEEL AISI316 Fixed



S. 540



S. 560

According to the model, they are compliant at the following Atex legislation:

Atex 94/9 IIB 2GD c T4 T135°C X
Atex 94/9 II 3GD c X



Solid and compact **fixed bracket** with 4 slotted mounting holes for easy and safe installation.

Adjustable guide arms allows delivery hose going out at the desired location depending on hose reel installation.

Large and **multidirectional roller guide** with self lubricating hose guide rollers.

Automatic block system built with material compliant with Atex legislation, it allows the block of the hose at the desired measure.

Drum support bushings in TENAXID®, self lubricating, material resistant against corrosion.

The **drum** in stainless steel AISI 316, is sturdy and practical, with beads to reinforce the structure and rounded border.

Automatic with constant **strength spring** completely enclosed protected and lubricated inside the reel. Tested to resist from 15000 to 20000 cycles.*

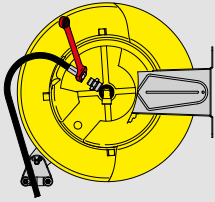
Swivel joint with ideal internal dimensions to guarantee the most possible flow. It is realized in stainless steel AISI 316, with seals in Viton.

* A cycle is composed by a number of rotations in one direction and the same in the opposite direction. The number of rotations depends on the spring model. This allows to simulate the rewinding and unwinding of a hose with its maximum length.

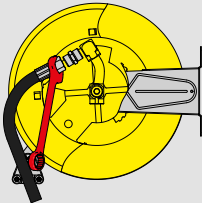
Hose reel capacity

Hose external diameter	Hose reel series			
	430	530	540	560
ø 17 mm	length max. 21 m	length max. 28 m	length max. 30 m	length max. 60 m
ø 20 mm	length max. 16 m	length max. 26 m	length max. 30 m	length max. 60 m
ø 22 mm	length max. 14 m	length max. 24 m	length max. 30 m	length max. 60 m
ø 28 mm	-	-	length max. 22 m	length max. 40 m
ø 34 mm	-	-	length max. 17 m	length max. 30 m

Hose reel outlet hose connection



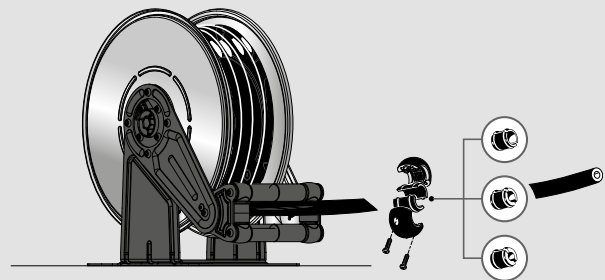
For hoses up to 1/2"		
Series	Inlet	Outlet
430	F 1/2"	F 1/2"
530	F 1/2"	F 1/2"
540	F 1/2"	F 1/2"
560	F 1/2"	F 1/2"



For hoses from 3/4" to 1"		
Series	Inlet	Outlet
430	F 1"	F 3/4"
530	F 1"	F 3/4" - 1"
540	F 1"	F 1"
560	F 1"	F 1"

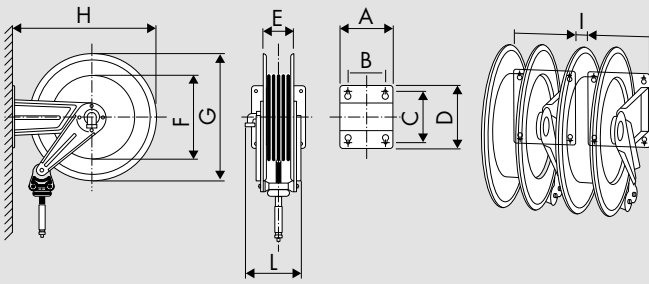
Universal hose stop

The universal hose stop is just mounted in all models with hose. The models without hose come, together with the hose stop, with some adaptors for hoses of different sizes. Following table summarizes the internal diameters of the hose stop available for all the series.



Fluid - Pressure	Series 430 (ø mm) for hoses from 1/2"	Series 530 (ø mm) for hoses from 1/2"	Series 540 (ø mm) for hoses from 1/2"	Series 540 (ø mm) for hoses from 1"	Series 560 (ø mm) for hoses from 1/2"	Series 560 (ø mm) for hoses from 1"
Water max 130°C 100 bar	14-17-19	14-17-19	14-17-19	25-34,5	14-17-19	25-34,5

Overall dimensions (mm)



Series	A	B	C	D	E	F	G	H	I	L	1-m ³	Kg*
430	186	140	196	226	115	261	420	460	20	215	0,098	18
530	203	153	220	258	115	328	510	560	20	230	0,120	21
540	300	218	228	268	190	316	510	573	0	310	0,175	28,5
560	488	399	238	272	368	316	510	578	0	475	0,310	48

* Packing is included in the weight

Hose reel installation

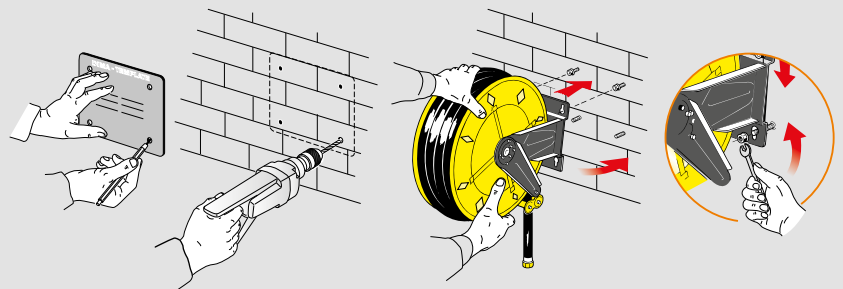
The adjustable arms can be easily repositioned according to needs

Standard wall installation	Optional wall installation	Bench installation	Ceiling installation
<p>▶ 1</p>	<p>▶ 2</p>	<p>▶ 3</p>	<p>▶ 4</p>
<p>To switch from 1 to 2 configuration is necessary to follow this simple procedure</p>			
Starting position	Unlock fixing arms screws	Arms rotation	Final position
			<p>Hose reel rotation of 180°</p>

Wall mounting

TEMPLATE

The solid and compact fixed bracket, included with the hose reel, is provided with four slotted mounting holes for easy and safe installation. Using the template supplied with the hose reel it's easier to mark plugs holes for hose reel fixing.



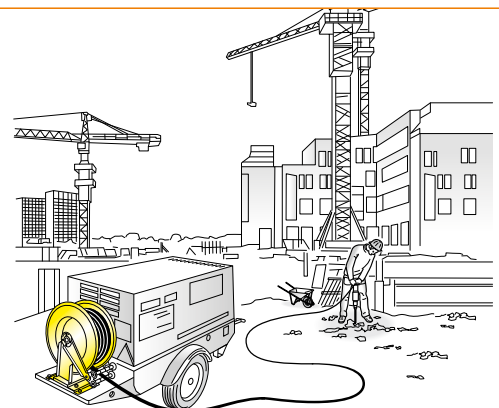
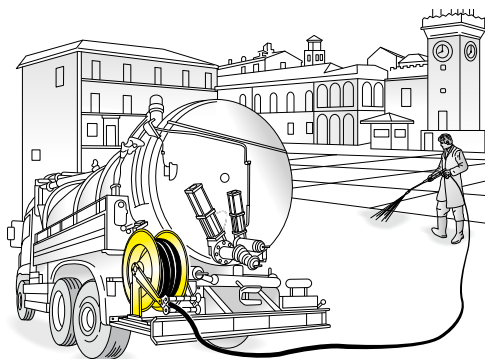
Series



Resistant with the corrosion: all the components are painted (painting with epoxy powder coating, thickness min. 80µ), or finished with a galvanic treatment, ideal to work externally.
Easy to install everywhere, like for example on the wall, on the floor, on the ceiling and on the vehicles.

Fluid - Pressure	PAINTED STEEL			STAINLESS STEEL AISI 304		
	Swivel joint	Seals	Central shaft	Swivel joint	Seals	Central shaft
Air, Water 10-20 bar	brass	Viton	galvanised steel	brass	Viton	stainless steel AISI 304
Water max 130°C 100 bar	stainless steel AISI 304	Viton	galvanised steel	stainless steel AISI 304	Viton	stainless steel AISI 304
Water max 130°C 200 bar	stainless steel AISI 304	Viton	galvanised steel	stainless steel AISI 304	Viton	stainless steel AISI 304
Water max 130°C 400 bar	stainless steel AISI 304	Teflon	galvanised steel	stainless steel AISI 304	Teflon	stainless steel AISI 304
Oil and similar 50-100-150 bar	galvanised steel	Polyurethane	galvanised steel	stainless steel AISI 304	Viton	stainless steel AISI 304
Diesel fuel 10 bar	brass	Viton	galvanised steel	brass	Viton	stainless steel AISI 304

USES



Series 560

STAINLESS STEEL AISI 304 Fixed



Suggested for aggressive workplace or in application with use of water. The electrolytic polishing surface treatment helps the elimination of the surface impurities, increases the average life of the hose reel and improves its appearance.

According to the model, they are compliant at the following Atex legislation:

Atex 94/9 IIB 2GD c T4 T135°C X
Atex 94/9 II 3GD c X



Automatic block system built with material compliant with Atex legislation, it allows the block of the hose at the desired measure.

Solid and compact **fixed painted steel bracket** with 4 slotted mounting holes for easy and safe installation.

Adjustable guide arms allows delivery hose going out at the desired location depending on hose reel installation.

Large and **multidirectional roller guide** with self lubricating hose guide rollers.

Adjustable hose stop.

Drum support bushings in TENAXID®, self lubricating, material resistant against corrosion.

The **drum**, in painted steel or in stainless steel AISI 304, is sturdy and practical, with beads to reinforce the structure and rounded border.

Double automatic with constant strength spring completely enclosed protected and lubricated inside the reel. Tested to resist from 15000 to 20000 cycles*.

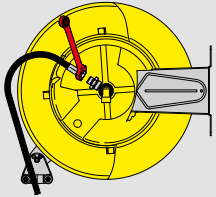
Swivel joint with ideal internal dimensions to guarantee the most possible flow. It is realized, depending on the model, in brass, galvanize steel and stainless steel AISI 304, with seals in Polyurethane, Viton and Teflon.

* A cycle is composed by a number of rotations in one direction and the same in the opposite direction. The number of rotations depends on the spring model. This allows to simulate the rewinding and unwinding of a hose with its maximum length.

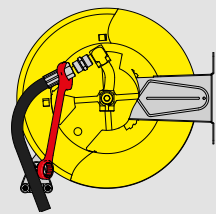
Hose reel capacity

Hose external diameter	Hose reel series 560	
	With connection from 1/2"	With connection from 1"
ø 22 mm	length max. 60 m	-
ø 28 mm	-	length max. 40 m
ø 34 mm	-	length max. 30 m

Hose reel outlet hose connection



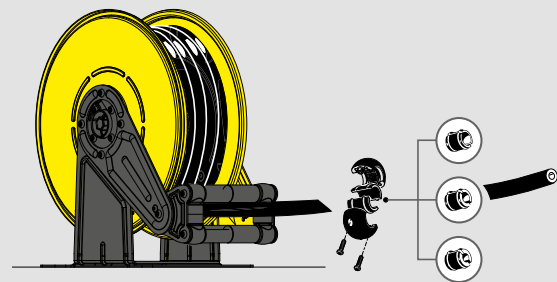
For hoses up to 1/2"		
Series	Inlet	Outlet
560	F 1/2"	F 1/2"



For hoses from 3/4" to 1"		
Series	Inlet	Outlet
560	F 1"	F 1"

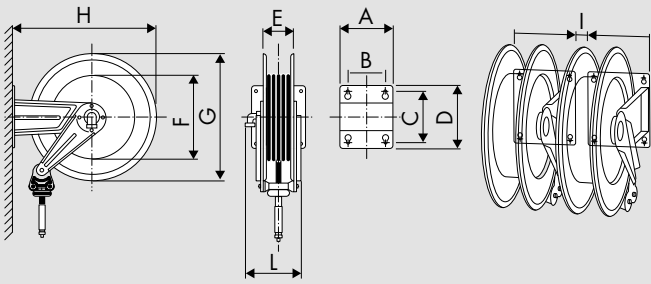
Universal hose stop

The universal hose stop is just mounted in all models with hose. The models without hose come together with the hose stop, with some adaptors for hoses of different sizes. Following table summarizes the internal diameters of the hose stop available for all the series.



Fluid - Pressure	Series 560 (ø mm) for hoses from 1/2"	Series 560 (ø mm) for hoses from 1"
Air, Water 20 bar	14-17-19	25-34,5
Water max 130°C 100 bar	14-17-19	25-34,5
Water max 130°C 200 bar	14-17-19	-
Water max 130°C 400 bar	14-17-19	-
Oil and similar 50-100-150 bar	14-17-19	25-34,5
Diesel fuel 10 bar	-	25-34,5

Overall dimensions (mm)



Series	A	B	C	D	E	F	G	H	I	L	1-m ³	Kg*
560	488	399	238	272	368	316	510	578	0	475	0,310	from 48 to 80

* Packing is included in the weight

Hose reel installation

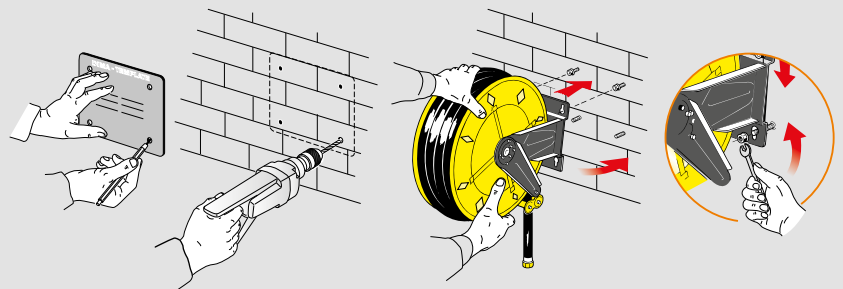
The adjustable arms can be easily repositioned according to needs

Standard wall installation	Optional wall installation	Bench installation	Ceiling installation
<p>1</p>	<p>2</p>	<p>3</p>	<p>4</p>
<p>To switch from 1 to 2 configuration is necessary to follow this simple procedure</p>			
Starting position	Unlock fixing arms screws	Arms rotation	Final position
			<p>Hose reel rotation of 180°</p>

Wall mounting

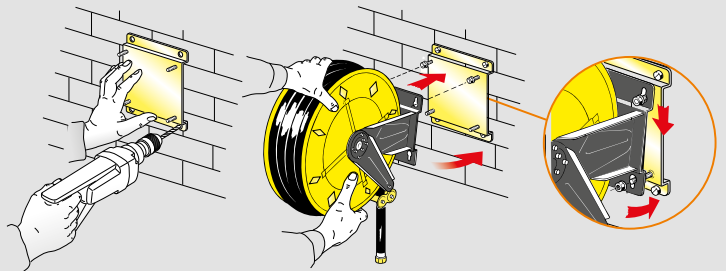
TEMPLATE

The solid and compact fixed bracket, included with the hose reel, is provided with four slotted mounting holes for easy and safe installation. Using the template supplied with the hose reel it's easier to mark plugs holes for hose reel fixing.



FIXED BRACKET

On request an additional bracket for a quick installation and disassembly is available. Furthermore this bracket allows installing several hose reels in series. The P/N takes the suffix /SM. For example: 560/10 becomes 560/10/SM.



The swivelling bracket is not available on the series 560.

PAINTED STEEL Fixed - Swivelling

Series



270-300-350



430-530-540



430-530
540-560
Aisi 316



560



440-4440 ABS



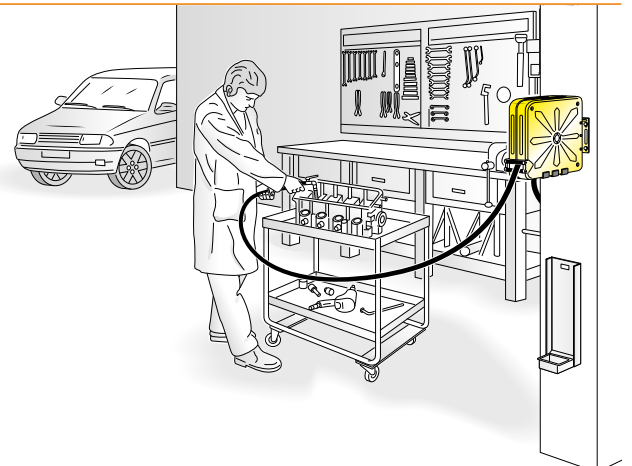
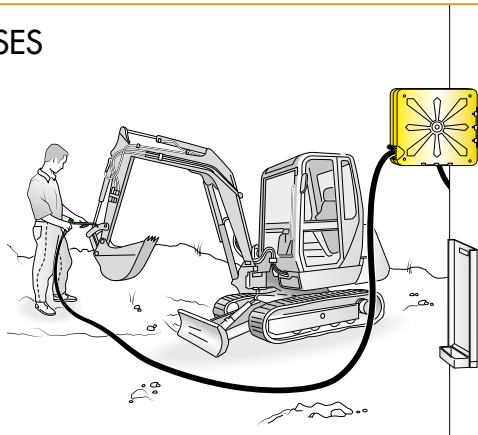
4430 ABS



Resistant with the corrosion: all the components are painted (painting with epoxy powder coating, thickness min. 80µ), or finished with a galvanic treatment, ideal to work externally.
Easy to install everywhere, like for example on the wall, on the floor, on the ceiling and on the vehicles.

Fluid - Pressure	PAINTED STEEL		
	Swivel joint	Seals	Central shaft
Air, Water 20 bar	brass	Viton	galvanised steel
Oil and similar 150 bar	galvanised steel	Polyurethane	galvanised steel
Grease 400 bar	galvanised steel	Polyurethane	galvanised steel
Suction waste oil	galvanised steel	Polyurethane	galvanised steel

USES



Series 4440 ABS

PAINTED STEEL ABS Fixed - Swivelling



ABS shock proof internal drum

Cover and bracket in painted steel

It has an internal drum in shockproof ABS. It is a valid alternative to the version with drum in painted steel, with less weight but with the same characteristics of sturdiness and reliability.

According to the model, they are compliant at the following Atex legislation:

Atex 94/9 IIB 2GD c T4 T135°C X
Atex 94/9 II 3GD c X



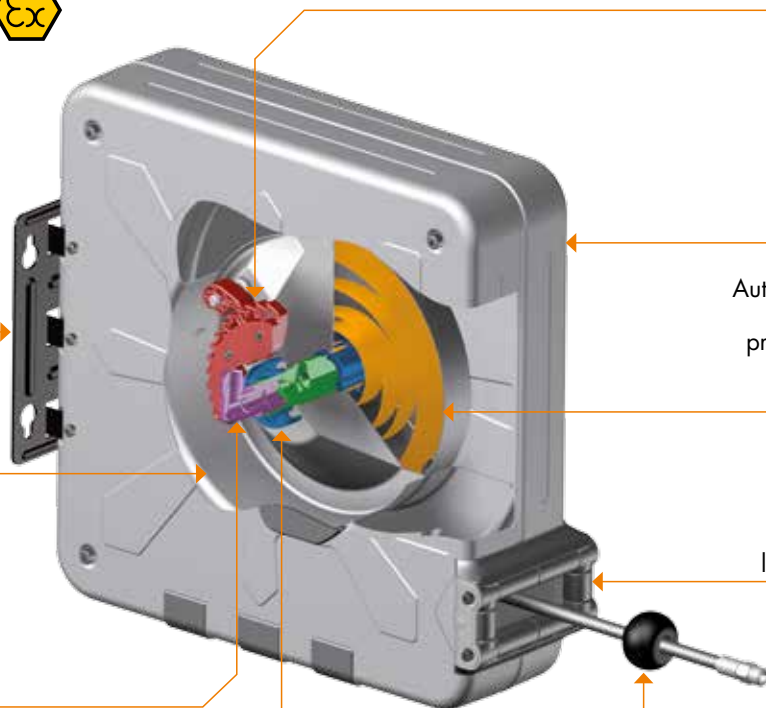
Automatic block system built with material compliant with Atex legislation, it allows the block of the hose at the desired measure.

Solid and compact **fixed painted steel bracket** with 4 slotted mounting holes for easy and safe installation.

Drum in painted steel or in shockproof ABS.

Swivel joint with ideal internal dimensions to guarantee the most possible flow. It is realized in brass, galvanize steel, with seals in Polyurethane, Viton.

Drum support bushings in TENAXID®, self lubricating, material resistant against corrosion.



Hose reel cover is in painted steel; it is sturdy with beads and borders rounded.

Automatic with constant **strength spring** completely enclosed protected and lubricated inside the reel. Tested to resist from 15000 to 20000 cycles.*

Large and **multidirectional roller guide** with self lubricating hose guide rollers.

Adjustable hose stop.

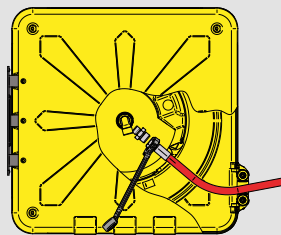
* A cycle is composed by a number of rotations in one direction and the same in the opposite direction. The number of rotations depends on the spring model. This allows to simulate the rewinding and unwinding of a hose with its maximum length.

Hose reel capacity

Hose external diameter	Hose reel series 440 - 4440 ABS
ø 17 mm	length max. 21 m
ø 19,5 mm	length max. 16 m
ø 22 mm	length max. 14 m

Hose reel outlet hose connection

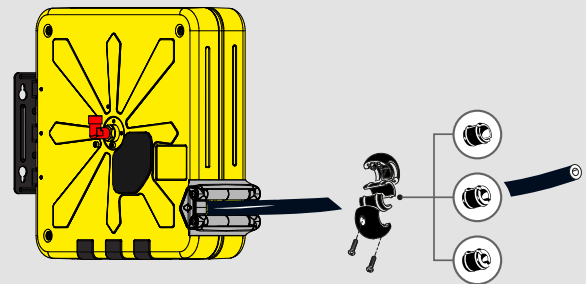
For hoses up to 1/2"		
Series	Inlet	Outlet
440	F 1/2"	F 1/2"
4440 ABS	F 1/2"	F 1/2"



The hose reel structure is designed also to facilitate the mounting and the disassembly of the hose.

Universal hose stop

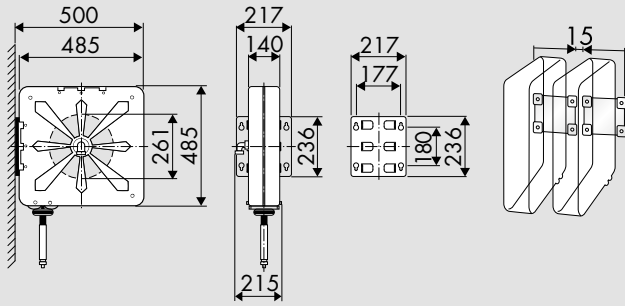
The universal hose stop is just mounted in all models with hose. The models without hose come, together with the hose stop, with some adaptors for hoses of different sizes. Following table summarizes the internal diameters of the hose stop, available for all the series.



Fluid - Pressure	Series 440 (ø mm)	Series 4440 ABS (ø mm)
Air - Water 20 bar	14-17-19-26	14-17-19-26
Oil and similar 150 bar	14-17-19-26	14-17-19-26
Grease 400 bar	14-17-19-26	14-17-19-26
Suction waste oil	14-17-19-26	-

Overall dimensions (mm)

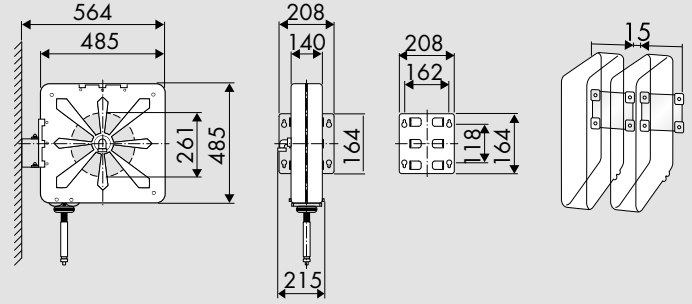
FIXED



Series	1-m ³	Kg*
440	0,111	from 23 to 29

* Packing is included in the weight

SWIVELLING

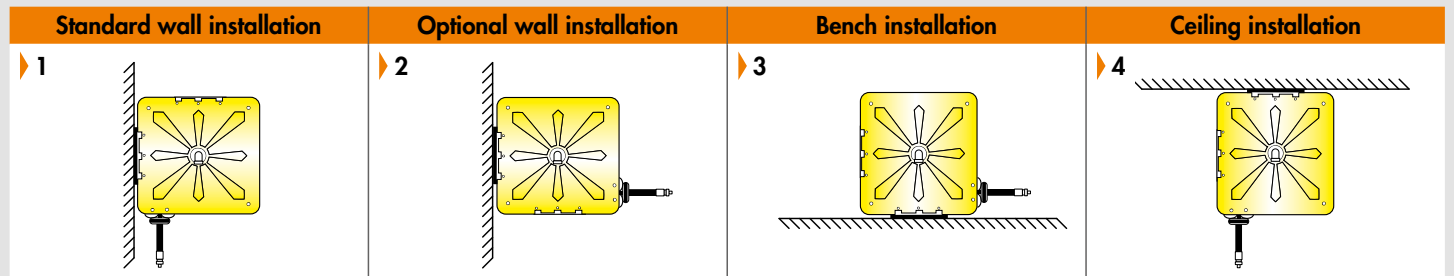


Series	1-m ³	Kg*
4440 ABS	0,111	from 19 to 25

* Packing is included in the weight

Hose reel installation

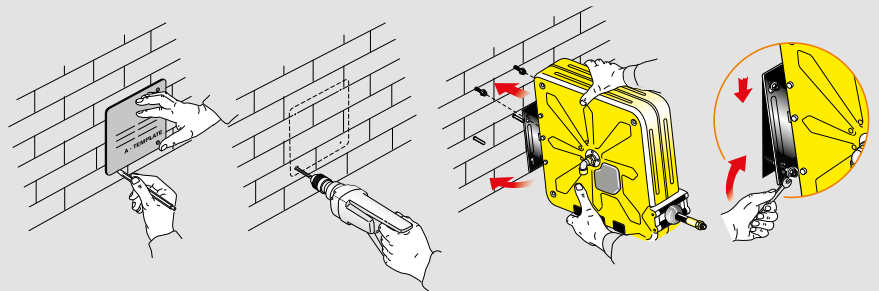
The adjustable arms can be easily repositioned according to needs



Wall mounting

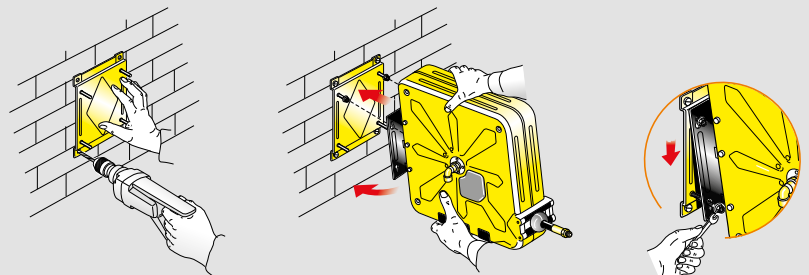
TEMPLATE

The solid and compact fixed bracket, included with the hose reel, is provided with four slotted mounting holes for easy and safe installation. Using the template supplied with the hose reel it's easier to mark plugs holes for hose reel fixing.



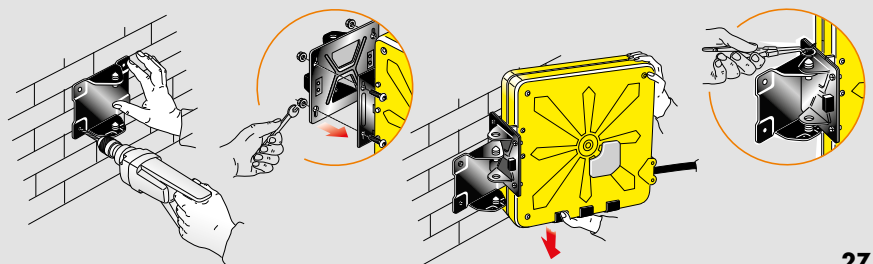
FIXED BRACKET

On request an additional bracket for a quick installation and disassembly is available. Furthermore this bracket allows installing several hose reels in series. The P/N takes the suffix /SM. For example: 440/10 becomes 440/10/SM.



SWIVELLING BRACKET

On request a swivelling bracket to make the reel turning 40° to the right and 40° to the left is available. The P/N takes the suffix /SO. For example: 440/10 becomes 440/10/SO.



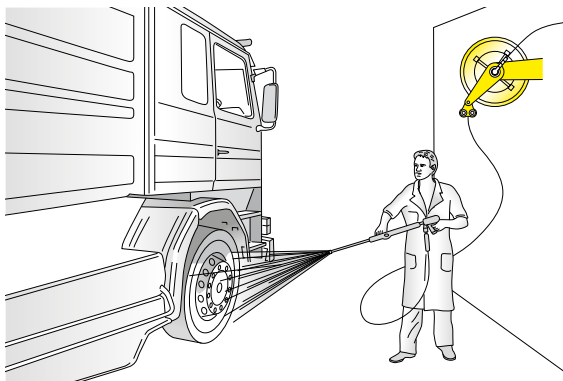
Series



It has a shockproof ABS drum and it is a valid alternative to the version with painted steel drum (pag. 12), with less weight but with the same characteristics of sturdiness and reliability. Easy to install everywhere, like for example on the wall, on the floor, on the ceiling and on the vehicles.

Fluid - Pressure	PAINTED STEEL			STAINLESS STEEL AISI 304		
	Swivel joint	Seals	Central shaft	Swivel joint	Seals	Central shaft
Air, Water 20 bar	brass	Viton	galvanised steel	brass	Viton	stainless steel AISI 304
Water max 130°C 100 bar	stainless steel AISI 304	Viton	galvanised steel	stainless steel AISI 304	Viton	stainless steel AISI 304
Water max 130°C 200 bar	stainless steel AISI 304	Viton	galvanised steel	stainless steel AISI 304	Viton	stainless steel AISI 304
Oil and similar 150 bar	galvanised steel	Polyurethane	galvanised steel	stainless steel AISI 304	Viton	stainless steel AISI 304
Grease 400 - 600 bar	galvanised steel	Polyurethane	galvanised steel	stainless steel AISI 304	Polyurethane	stainless steel AISI 304
Diesel fuel 10 bar	brass	Viton	galvanised steel	-	-	-
Suction waste oil	galvanised steel	Polyurethane	galvanised steel	stainless steel AISI 304	Viton	stainless steel AISI 304
AD Blue 10 bar	stainless steel AISI 304-316L	Viton	stainless steel AISI 304	stainless steel AISI 304-316L	Viton	stainless steel AISI 304

USES



Series 4430 ABS

STAINLESS STEEL AISI 304 Fixed - Swivelling



Suggested for aggressive workplace or in application with use of water. It is a valid alternative to the version completely in stainless steel. Easy to install everywhere, like for example on the wall, on the floor, on the ceiling and on the vehicles.

In accordance with
directive
Atex 94/9 II 3GD c X



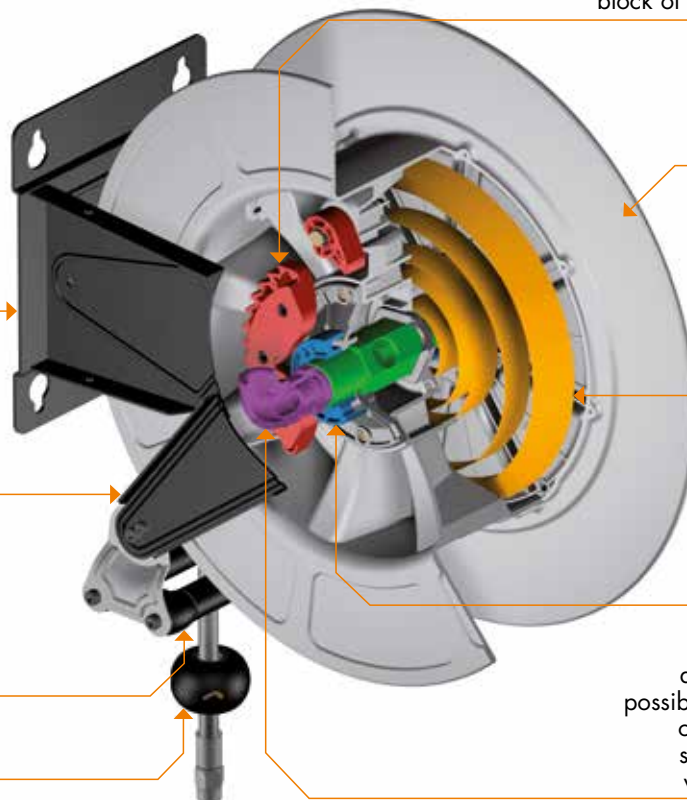
Automatic block system built with material compliant with Atex legislation, it allows the block of the hose at the desired measure.

Solid and compact **fixed bracket** in painted steel or in stainless steel AISI 304 with electrolytic polishing with 4 slotted mounting holes for easy and safe installation.

Adjustable guide arms allows delivery hose going out at the desired location depending on hose reel installation.

Large and **multidirectional roller guide** with self lubricating hose guide rollers.

Adjustable hose stop.



Sturdy and practical **drum** in shockproof ABS.

Automatic with constant **strength spring** completely enclosed protected and lubricated inside the reel. Tested to resist from 15000 to 20000 cicli.*

Drum support bushings in TENAXID®, self lubricating, material resistant against corrosion.

Swivel joint with ideal internal dimensions to guarantee the most possible flow. It is realized, depending on the model, in brass, galvanize steel and stainless steel AISI 304, with seals in Polyurethane, Viton.

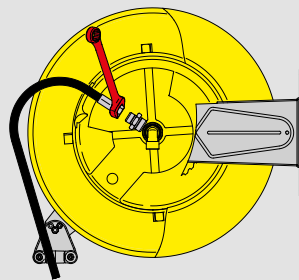
* A cycle is composed by a number of rotations in one direction and the same in the opposite direction. The number of rotations depends on the spring model. This allows to simulate the rewinding and unwinding of a hose with its maximum length.

Hose reel capacity

Hose external diameter	Hose reel series 4430 ABS
ø 17 mm	length max. 21 m
ø 19,5 mm	length max. 16 m
ø 22 mm	length max. 14 m
ø 22,5 mm	length max. 10 m
ø 26 mm	length max. 8 m

Hose reel outlet hose connection

Series	Inlet	Outlet
4430 ABS	F 1/2"	F 1/2"

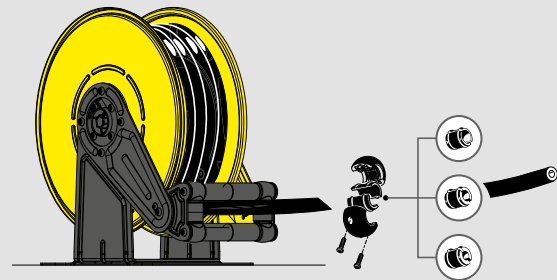


The hose reel structure is designed also to facilitate the mounting and the disassembly of the hose.

Universal hose stop

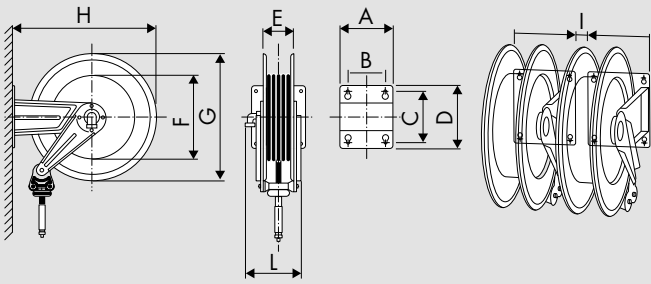
The universal hose stop is just mounted in all models with hose. The models without hose come, together with the hose stop, with some adaptors for hoses of different sizes.

Following table summarizes the internal diameters of the hose stop available for all the series.



Fluid - Pressure	Series 4430 (ø mm) for hoses from 1/2"
Air, Water 20 bar	14-17-19
Water max 130°C 100 bar	14-17-19
Water max 130°C 200 bar	14-17-19
Oil and similar 150 bar	14-17-19
Grease 400 bar - 600 bar	14-17-19
Diesel fuel 10 bar	14-17-19-26
Suction waste oil	14-17-19-26
AD Blue 10 bar	14-17,5-21-24,5-28-30-34

Overall dimensions (mm)



Series	A	B	C	D	E	F	G	H	I	L	1-m ³	Kg*
4430	186	140	196	226	115	261	420	460	20	215	0,098	from 13 to 20

* Packing is included in the weight

Hose reel installation

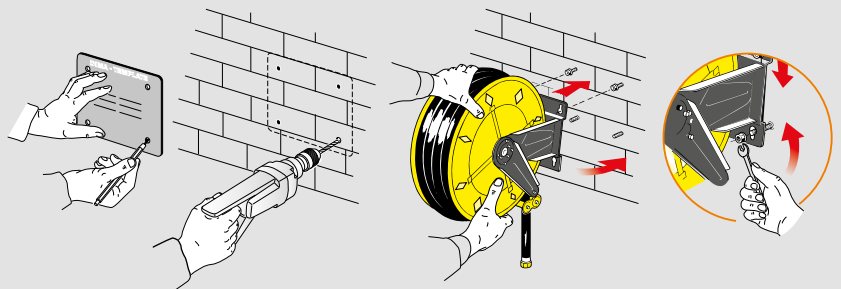
The adjustable arms can be easily repositioned according to needs

Standard wall installation	Optional wall installation	Bench installation	Ceiling installation
<p>1</p>	<p>2</p>	<p>3</p>	<p>4</p>
<p>To switch from 1 to 2 configuration is necessary to follow this simple procedure</p>			
Starting position	Unlock fixing arms screws	Arms rotation	Final position
			<p>Hose reel rotation of 180°</p>

Wall mounting

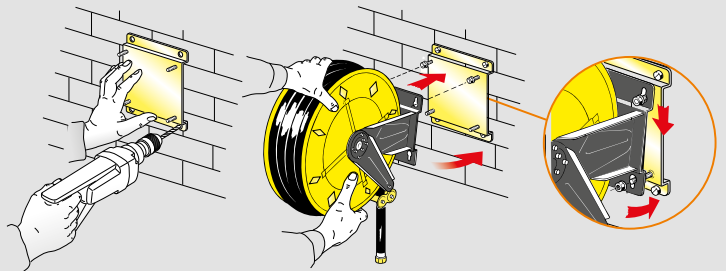
TEMPLATE

The solid and compact fixed bracket, included with the hose reel, is provided with four slotted mounting holes for easy and safe installation. Using the template supplied with the hose reel it's easier to mark plugs holes for hose reel fixing.



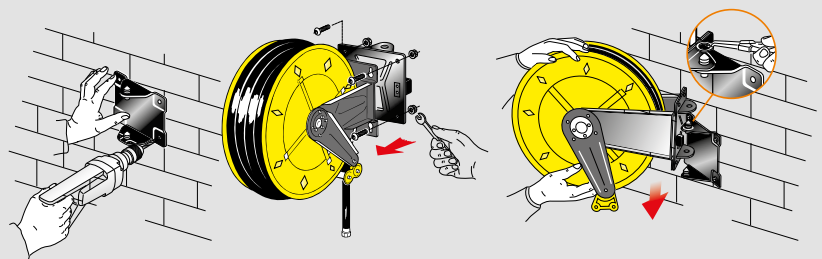
FIXED BRACKET

On request an additional bracket for a quick installation and disassembly is available. Furthermore this bracket allows installing several hose reels in series. The P/N takes the suffix /SM. For example: 4430/10 becomes 4430/10/SM.



SWIVELLING BRACKET

On request a swivelling bracket to make the reel turning 40° to the right and 40° to the left is available. The P/N takes the suffix /SO. For example: 4430/10 becomes 4430/10/SO.



For the SWIVELLING version add the suffix "/SO" at the P/N, except for the 560 series.
For example: 270/10/SO

FIXED PAINTED STEEL

FIXED S. STEEL AISI 304

Supplied with:

- hose in black synthetic rubber with galvanized steel coupling
- brass swivel joint
- "Viton" seals
- central shaft in galvanized steel or stainless steel AISI 304
- inlet hose 0,6 m to connect the hose reel to the system (standard on the versions with hose)



	P/N	P/N	Hose supplied	Connection	
				Inlet	Outlet
S. 270	270/10	272/10	without hose	F 3/8"G	F 3/8"G
	270/11	272/11	10m 3/8" (952/10)	F 3/8"G	M 3/8"G
	270/14	272/14	15m 1/4" (932/15)	F 3/8"G	M 1/4"G
S. 300	300/10	302/10	without hose	F 3/8"G	F 3/8"G
	300/11	302/11	12m 3/8" (952/12)	F 3/8"G	M 3/8"G
S. 350	350/10	352/10	without hose	F 3/8"G	F 3/8"G
	350/11	352/11	18m 3/8" (952/18)	F 3/8"G	M 3/8"G
	350/14	352/14	12m 3/8" (952/12)	F 3/8"G	M 3/8"G
S. 430	430/10	432/10	without hose	F 1/2"G	F 1/2"G
	430/11	432/11	15m 1/2" (962/15)	F 1/2"G	M 1/2"G
	430/12	432/12	12m 3/8" (952/13)	F 1/2"G	M 3/8"G
	430/13	432/13	18m 3/8" (952/19)	F 1/2"G	M 3/8"G
	430/14	432/14	10m 1/2" (962/10)	F 1/2"G	M 1/2"G
S. 4430 ABS	4430/10	4432/10	without hose	F 1/2"G	F 1/2"G
	4430/11	4432/11	15m 1/2" (962/15)	F 1/2"G	M 1/2"G
	4430/12	4432/12	12m 3/8" (952/13)	F 1/2"G	M 3/8"G
	4430/13	4432/13	18m 3/8" (952/19)	F 1/2"G	M 3/8"G
	4430/14	4432/14	10m 1/2" (962/10)	F 1/2"G	M 1/2"G
S. 530	530/10	532/10	without hose	F 1/2"G	F 1/2"G
	530/11	532/11	20m 1/2" (962/20)	F 1/2"G	M 1/2"G
	530/12	532/12	25m 1/2" (962/25)	F 1/2"G	M 1/2"G
S. 540	540/10	542/10	without hose	F 1"G	F 1"G
	540/11	542/11	15m 3/4" (972/15)	F 1"G	M 3/4"G
	540/12	542/12	20m 3/4" (972/20)	F 1"G	M 3/4"G
	540/13	542/13	15m 1" (982/15)	F 1"G	M 1"G
	540/15	542/15	without hose	F 1/2"G	F 1/2"G
	540/16	542/16	30m 1/2" (962/30)	F 1/2"G	M 1/2"G
S. 560	560/10	562/10	without hose	F 1"G	F 1"G
	560/11	562/11	30m 3/4" (972/30)	F 1"G	M 3/4"G
	560/12	562/12	35m 3/4" (972/35)	F 1"G	M 3/4"G
	560/13	562/13	40m 3/4" (972/40)	F 1"G	M 3/4"G
	560/14	562/14	20m 1" (982/20)	F 1"G	M 1"G
	560/15	562/15	30m 1" (982/30)	F 1"G	M 1"G
	560/16	562/16	without hose	F 1/2"G	F 1/2"G
	560/17	562/17	40m 1/2" (962/40)	F 1/2"G	M 1/2"G
	560/18	562/18	50m 1/2" (962/50)	F 1/2"G	M 1/2"G
	560/19	562/19	60m 1/2" (962/60)	F 1/2"G	M 1/2"G

Rubber handles, mounted on hose terminal part, are available for all the above series. For more information look at page 50.



Atex 94/9

II 3GD c X

IIB 2GD c T4 T135°C X (only for series without hose 430-530-540-560)

Air, Water max 70°C 10 bar Hygienic hose

For the SWIVELLING version add the suffix "/SO" at the P/N, except for the 560 series. For example: 302/10/SO

FIXED S. STEEL AISI 304



Supplied with:

- hose in synthetic rubber with blue hygienic covering and galvanized steel coupling, available for food workplace, compliant with the DIR 2007/19/EC
- brass swivel joint - "Viton" seals
- central shaft in stainless steel AISI 304
- inlet hose 0,6 m to connect the hose reel to the system (standard on the versions with hose)



P/N	Hygienic hose supplied	Connection	
		Inlet	Outlet

S. 300	302/10	without hose*	F 3/8"G	F 3/8"G
	303/11	12m 3/8" (950/12)	F 3/8"G	M 3/8"G

S. 430	432/10	without hose*	F 1/2"G	F 1/2"G
	433/11	10m 1/2" (960/10)	F 1/2"G	M 1/2"G
	433/12	15m 1/2" (960/15)	F 1/2"G	M 1/2"G

S. 4430 ABS	4432/10	without hose*	F 1/2"G	F 1/2"G
	4433/11	10m 1/2" (960/10)	F 1/2"G	M 1/2"G
	4433/12	15m 1/2" (960/15)	F 1/2"G	M 1/2"G

S. 530	532/10	without hose*	F 1/2"G	F 1/2"G
	533/11	20m 1/2" (960/20)	F 1/2"G	M 1/2"G
	533/12	25m 1/2" (960/25)	F 1/2"G	M 1/2"G

S. 540	542/10	without hose*	F 1"G	F 1"G
	543/11	15m 3/4" (970/15)	F 3/4"G	M 3/4"G
	543/12	20m 3/4" (970/20)	F 3/4"G	M 3/4"G
	543/13	15m 1" (980/15)	F 1"G	M 1"G
	542/15	without hose*	F 1/2"G	F 1/2"G
	543/16	30m 1/2" (960/30)	F 1/2"G	M 1/2"G

S. 560	562/10	without hose*	F 1"G	F 1"G
	563/11	30m 3/4" (970/30)	F 3/4"G	M 3/4"G
	563/13	40m 3/4" (970/40)	F 3/4"G	M 3/4"G
	563/14	20m 1" (980/20)	F 1"G	M 1"G
	563/15	30m 1" (980/30)	F 1"G	M 1"G

Rubber handles, mounted on hose terminal part, are available for all the above series. For more information look at page 50.

* For the version without hose the maximum work pressure is 20 bar



Atex 94/9

II 3GD c X

IIB 2GD c T4 T135°C X (only for series without hose 430-530-540-560)

For the SWIVELLING version add the suffix "/SO" at the P/N, except for the 560 series.
For example:
300/20/SO

FIXED PAINTED STEEL

FIXED S. STEEL AISI 304

Supplied with:

- hose in black synthetic rubber with galvanized steel coupling
- AISI 304 stainless steel swivel joint
- "Viton" seals
- central shaft in galvanized steel or stainless steel AISI 304
- inlet hose 0,6 m to connect the hose reel to the system (standard on the versions with hose)



	P/N	P/N	Hose supplied	Connection	
				Inlet	Outlet
S. 300	300/20	302/40	without hose*	F 1/2"G	F 3/8"- 1/2"G
	300/21	302/21	12m 3/8" (953/13)	F 1/2"G	M 3/8"G
	300/22	302/22	8m 1/2" (963/8)	F 1/2"G	M 1/2"G
S. 350	350/20	352/40	without hose*	F 1/2"G	F 3/8"- 1/2"G
	350/21	352/21	17m 3/8" (953/18)	F 1/2"G	M 3/8"G
	350/22	352/22	12m 3/8" (953/13)	F 1/2"G	M 3/8"G
	350/23	352/23	10m 1/2" (963/9)	F 1/2"G	M 1/2"G
S. 430	430/20	434/20	without hose*	F 1/2"G	F 1/2"G
	430/21	432/21	10m 1/2" (963/12)	F 1/2"G	M 1/2"G
	430/22	432/22	15m 1/2" (963/14)	F 1/2"G	M 1/2"G
S. 4430 ABS	4430/20	4434/20	without hose*	F 1/2"G	F 1/2"G
	4430/21	4432/21	10m 1/2" (963/12)	F 1/2"G	M 1/2"G
	4430/22	4432/22	15m 1/2" (963/14)	F 1/2"G	M 1/2"G
S. 530	530/20	534/20	without hose*	F 1/2"G	F 1/2"G
	530/21	532/21	20m 1/2" (963/19)	F 1/2"G	M 1/2"G
	530/22	532/22	25m 1/2" (963/24)	F 1/2"G	M 1/2"G
S. 540	540/20	544/20	without hose*	F 1"G	F 1"G
	540/21**	542/21**	15m 1" (983/15)	F 1"G	M 1"G
	540/22	542/22	15m 3/4" (973/14)	F 1"G	M 3/4"G
	540/23	542/23	20m 3/4" (973/19)	F 1"G	M 3/4"G
	540/25	544/25	without hose*	F 1/2"G	F 1/2"G
	540/26	542/26	30m 1/2" (963/29)	F 1/2"G	M 1/2"G
S. 560	560/20	564/20	without hose*	F 1"G	F 1"G
	560/21	562/21	30m 3/4" (973/29)	F 1"G	M 3/4"G
	560/22	562/22	35m 3/4" (973/34)	F 1"G	M 3/4"G
	560/23	562/23	40m 3/4" (973/39)	F 1"G	M 3/4"G
	560/24**	562/24**	20m 1" (983/19)	F 1"G	M 1"G
	560/25**	562/25**	30m 1" (983/29)	F 1"G	M 1"G
	560/26	564/26	without hose*	F 1/2"G	F 1/2"G
	560/27	562/27	40m 1/2" (963/39)	F 1/2"G	M 1/2"G
	560/28	562/28	50m 1/2" (963/49)	F 1/2"G	M 1/2"G
	560/29	562/29	60m 1/2" (963/59)	F 1/2"G	M 1/2"G

Rubber handles, mounted on hose terminal part, are available for all the above series. For more information look at page 50.

** Work max pressure 50 bar, hose max working pressure 88 bar

* For the version without hose the maximum working pressure is 150 bar



Atex 94/9

II 3GD c X (only for series 300-350-4430 ABS)
IIB 2GD c T4 T135°C X

Water max 130°C 100 bar Hygienic hose

For the SWIVELLING version add the suffix "/SO" at the P/N, except for the 560 series.
For example:
302/40/SO

FIXED S. STEEL AISI 304



Supplied with:

- hose in synthetic rubber with blue hygienic covering with galvanized steel coupling
- AISI 304 stainless steel swivel joint
- "Viton" seals
- central shaft in stainless steel AISI 304
- inlet hose 0,6 m to connect the hose reel to the system (standard on the versions with hose)



	P/N	Hygienic hose supplied	Connection	
			Inlet	Outlet
S. 300	302/40	without hose*	F 1/2"G	F 3/8"-1/2"G
	303/21	8m 1/2" (964/8)	F 1/2"G	M 1/2"G
	303/22	12m 3/8" (954/13)	F 1/2"G	M 3/8"G
S. 350	352/40	without hose*	F 1/2"G	F 3/8"- 1/2"G
	353/22	12m 3/8" (954/13)	F 1/2"G	M 3/8"G
S. 430	434/20	without hose*	F 1/2"G	F 1/2"G
	433/21	10m 1/2" (964/11)	F 1/2"G	M 1/2"G
	433/22	15m 1/2" (964/15)	F 1/2"G	M 1/2"G
S. 4430 ABS	4434/20	without hose*	F 1/2"G	F 1/2"G
	4433/21	10m 1/2" (964/11)	F 1/2"G	M 1/2"G
	4433/22	15m 1/2" (964/15)	F 1/2"G	M 1/2"G
S. 530	534/20	without hose*	F 1/2"G	F 1/2"G
	533/22	25m 1/2" (964/25)	F 1/2"G	M 1/2"G
S. 540	544/20	without hose*	F 1"G	F 1"G
	543/22	20m 3/4" (974/20)	F 1"G	M 3/4"G
S. 560	564/20	without hose*	F 1"G	F 1"G
	563/21	30m 3/4" (974/30)	F 1"G	M 3/4"G
	563/23	40m 3/4" (974/40)	F 1"G	M 3/4"G
	563/24**	20m 1" (984/20)	F 1"G	M 1"G
	563/25**	30m 1" (984/30)	F 1"G	M 1"G

Rubber handles, mounted on hose terminal part, are available for all the above series. For more information look at page 50.

** Work max pressure 50 bar, hose max pressure 88 bar

* For the version without hose the maximum working pressure is 150 bar



Atex 94/9

- › II 3GD c X (only for series 300-350-4430 ABS)
- › IIB 2GD c T4 T135°C X

For the SWIVELLING version add the suffix "/SO" at the P/N, except for the 560 series. For example: 300/30/SO

FIXED PAINTED STEEL

FIXED S. STEEL AISI 304

Supplied with:

- hose in black synthetic rubber with galvanized steel coupling
- AISI 304 stainless steel swivel joint
- "Viton" seals
- central shaft in galvanized steel or stainless steel AISI 304
- inlet hose 0,6 m to connect the hose reel to the system (standard on the versions with hose)



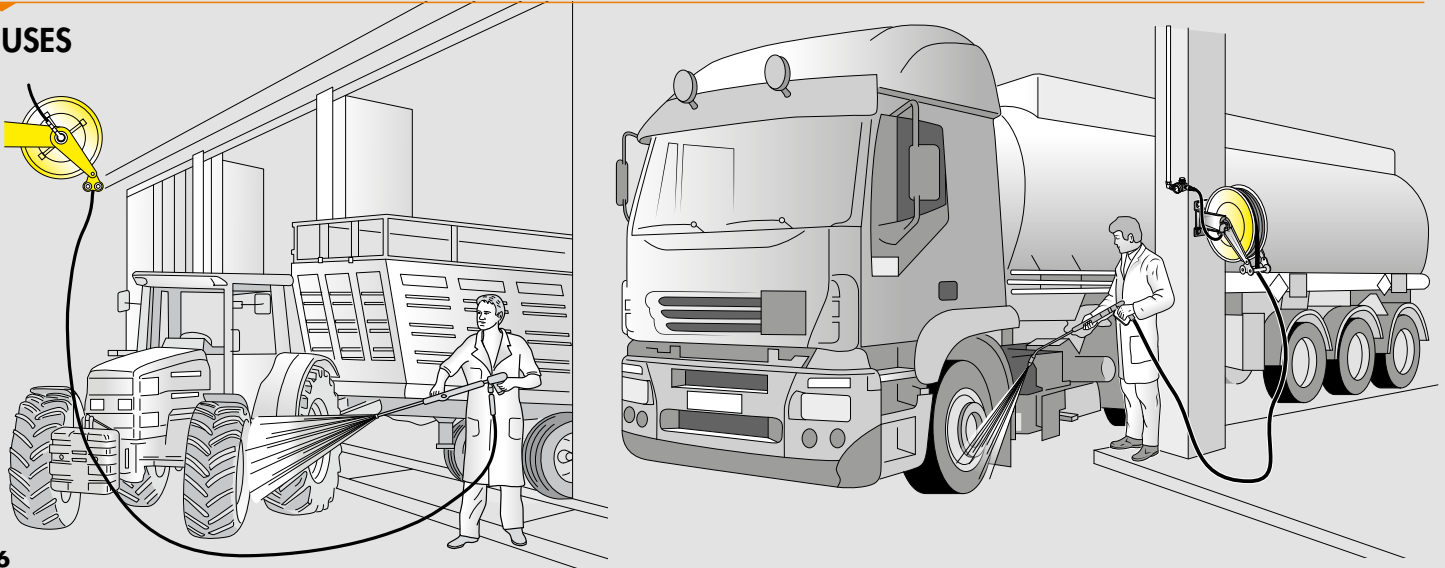
	P/N	P/N	Hose supplied	Connection	
				Inlet	Outlet
S. 300	300/30	302/30	without hose	F 3/8"G	F 3/8"G
	300/31	302/31	12m 5/16" (943/12)	F 3/8"G	F 3/8"G
S. 350	350/30	352/30	without hose	F 3/8"G	F 3/8"G
	350/31	352/31	12m 5/16" (943/12)	F 3/8"G	F 3/8"G
	350/32	352/32	17m 5/16" (943/17)	F 3/8"G	F 3/8"G
S. 430	430/30	434/30	without hose	F 3/8"G	F 1/2"G
	430/31	432/31	12m 3/8" (955/12)	F 3/8"G	F 3/8"G
	430/32	432/32	18m 3/8" (955/18)	F 3/8"G	F 3/8"G
S. 4430 ABS	4430/30	4434/30	without hose	F 3/8"G	F 1/2"G
	4430/31	4432/31	12m 3/8" (955/12)	F 3/8"G	F 3/8"G
	4430/32	4432/32	18m 3/8" (955/18)	F 3/8"G	F 3/8"G
S. 530	530/30	534/30	without hose	F 3/8"G	F 1/2"G
	530/31	532/31	25m 3/8" (955/25)	F 3/8"G	F 3/8"G
	530/32	532/32	20m 3/8" (955/20)	F 3/8"G	F 3/8"G
S. 540	540/30	544/30	without hose	F 3/8"G	F 1/2"G
	540/31	542/31	30m 3/8" (955/30)	F 3/8"G	F 3/8"G
S. 560	560/30	564/30	without hose	F 3/8"G	F 1/2"G
	560/31	562/31	40m 3/8" (955/40)	F 3/8"G	F 3/8"G
	560/32	562/32	50m 3/8" (955/50)	F 3/8"G	F 3/8"G

Rubber handles, mounted on hose terminal part, are available for all the above series. For more information look at page 50.



Atex 94/9

- ▶ II 3GD c X (only for series 300-350-4430 ABS)
- ▶ IIB 2GD c T4 T135°C X

USES


Water max 130°C 200 bar Hygienic hose

For the SWIVELLING version add the suffix "/SO" at the P/N, except for the 560 series. For example: 302/30/SO

FIXED S. STEEL AISI 304



Supplied with:

- hose in synthetic rubber with blue hygienic covering with galvanized steel coupling
- AISI 304 stainless steel swivel joint
- "Viton" seals
- central shaft in stainless steel AISI 304
- inlet hose 0,6 m to connect the hose reel to the system (standard on the versions with hose)



	P/N	Hygienic hose supplied	Connection	
			Inlet	Outlet
S. 300	302/30	without hose	F 3/8"G	F 3/8"G
	303/31	12m 5/16" (944/12)	F 3/8"G	F 3/8"G
S. 350	352/30	without hose	F 3/8"G	F 3/8"G
	353/31	12m 5/16" (944/12)	F 3/8"G	F 3/8"G
S. 430	434/30	without hose	F 3/8"G	F 1/2"G
	433/31	12m 3/8" (956/12)	F 3/8"G	F 3/8"G
	433/32	18m 3/8" (956/18)	F 3/8"G	F 3/8"G
S. 4430 ABS	4434/30	without hose	F 3/8"G	F 1/2"G
	4433/31	12m 3/8" (956/12)	F 3/8"G	F 3/8"G
	4433/32	18m 3/8" (956/18)	F 3/8"G	F 3/8"G
S. 530	534/30	without hose	F 3/8"G	F 1/2"G
	533/32	25m 3/8" (956/25)	F 3/8"G	F 3/8"G
S. 540	544/30	without hose	F 3/8"G	F 1/2"G
	543/31	30m 3/8" (956/30)	F 3/8"G	F 3/8"G
S. 560	564/30	without hose	F 3/8"G	F 1/2"G
	563/31	40m 3/8" (956/40)	F 3/8"G	F 3/8"G

Rubber handles, mounted on hose terminal part, are available for all the above series. For more information look at page 50.

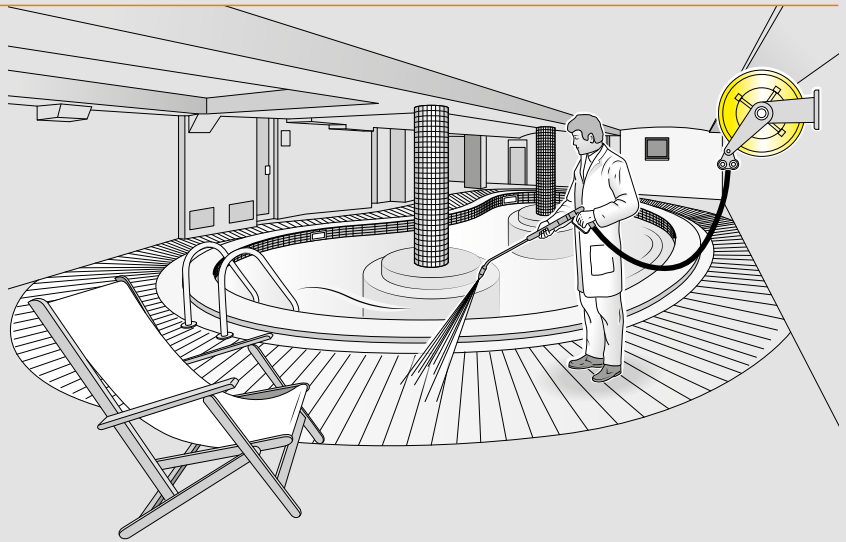
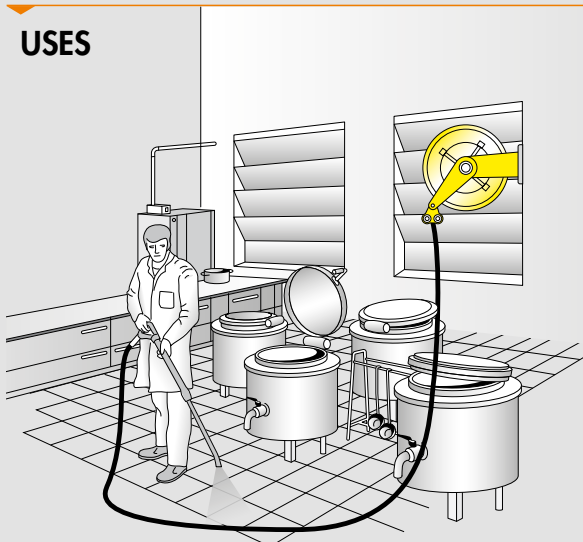


Atex 94/9

II 3GD c X (only for series 300-350-4430 ABS)

IIB 2GD c T4 T135°C X

USES



For the SWIVELLING version add the suffix "/SO" at the P/N, except for the 560 series.
For example:
300/35/SO

FIXED PAINTED STEEL

FIXED S. STEEL AISI 304

Supplied with:

- hose in black synthetic rubber with galvanized steel coupling
- AISI 304 stainless steel swivel joint
- "Teflon" seals
- central shaft in galvanized steel or stainless steel AISI 304
- inlet hose 0,6 m to connect the hose reel to the system (standard on the versions with hose)



	P/N	P/N	Hose supplied	Connection		
				Inlet	Outlet	
400 bar	S. 300	300/35	302/35	without hose	F 3/8"G	F 3/8"G
		300/36	302/36	12m 5/16" (945/12)	F 3/8"G	F 3/8"G
	S. 350	350/35	352/35	without hose	F 3/8"G	F 3/8"G
		350/36	352/36	12m 5/16" (945/12)	F 3/8"G	F 3/8"G
		350/37	352/37	17m 5/16" (945/17)	F 3/8"G	F 3/8"G
	S. 430	430/35	434/35	without hose	F 3/8"G	F 1/2"G
		430/38	432/38	10m 3/8" (907/10)	F 3/8"G	F 3/8"G
		430/39	432/39	15m 3/8" (907/15)	F 3/8"G	F 3/8"G
	S. 4430 ABS	-	4434/35	without hose	F 3/8"G	F 1/2"G
		-	4432/38	10m 3/8" (907/10)	F 3/8"G	F 3/8"G
		-	4432/39	15m 3/8" (907/15)	F 3/8"G	F 3/8"G
	S. 530	530/35	534/35	without hose	F 3/8"G	F 1/2"G
		530/36	532/36	20m 3/8" (907/20)	F 3/8"G	F 3/8"G
		530/37	532/37	25m 3/8" (907/25)	F 3/8"G	F 3/8"G
	S. 540	540/35	544/35	without hose	F 3/8"G	F 1/2"G
		540/36	542/36	30m 3/8" (907/30)	F 3/8"G	F 3/8"G
	S. 560	560/35	564/35	without hose	F 3/8"G	F 1/2"G
		560/36	562/36	40m 3/8" (907/40)	F 3/8"G	F 3/8"G
560/37		562/37	50m 3/8" (907/50)	F 3/8"G	F 3/8"G	
700 bar	S. 530	530/550	534/550	without hose	F 3/8"G	F 1/2"G
	S. 540	540/550	544/550	without hose	F 3/8"G	F 1/2"G

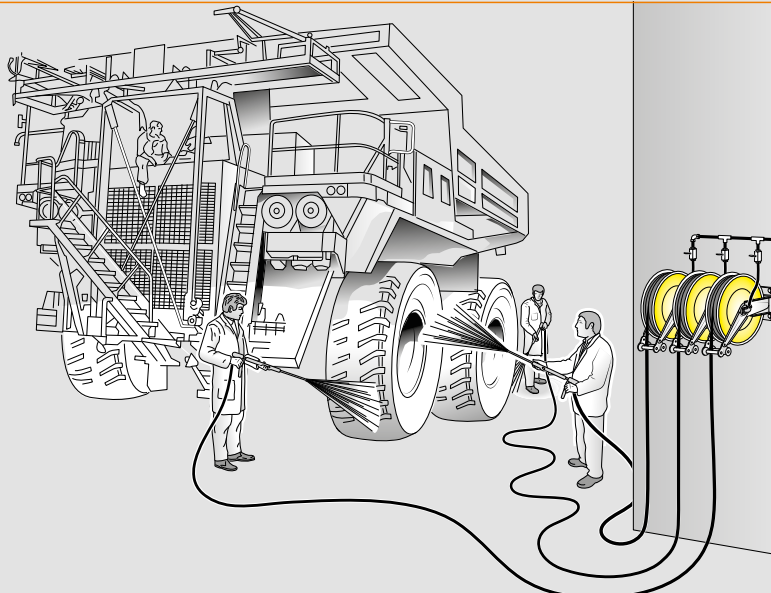
Rubber handles, mounted on hose terminal part, are available for all the above series. For more information look at page 50.



Atex 94/9

- ▶ II 3GD c X (only for series 300-350-4430 ABS)
- ▶ IIB 2GD c T4 T135°C X

USES



Water max 130°C 400 bar Hygienic hose

For the SWIVELLING version add the suffix "/SO" at the P/N, except for the 560 series. For example: 302/35/SO

FIXED S. STEEL AISI 304



Supplied with:

- hose in synthetic rubber with blue hygienic covering with galvanized steel coupling
- AISI 304 stainless steel swivel joint
- "Teflon" seals
- central shaft in stainless steel AISI 304
- inlet hose 0,6 m to connect the hose reel to the system (standard on the versions with hose)



	P/N	Hygienic hose supplied	Connection	
			Inlet	Outlet
S. 300	302/35	without hose	F 3/8"G	F 3/8"G
	303/36	12m 5/16" (946/12)	F 3/8"G	M 3/8"G
S. 350	352/35	without hose	F 3/8"G	F 3/8"G
	353/31	12m 5/16" (946/12)	F 3/8"G	M 3/8"G
S. 430	434/35	without hose	F 3/8"G	F 1/2"G
	433/38	10m 3/8" (906/10)	F 3/8"G	F 3/8"G
	433/39	15m 3/8" (906/15)	F 3/8"G	F 3/8"G
S. 530	534/35	without hose	F 3/8"G	F 1/2"G
	533/37	25m 3/8" (906/25)	F 3/8"G	F 3/8"G
S. 560	564/35	without hose	F 3/8"G	F 1/2"G
	563/36	40m 3/8" (906/40)	F 3/8"G	F 3/8"G

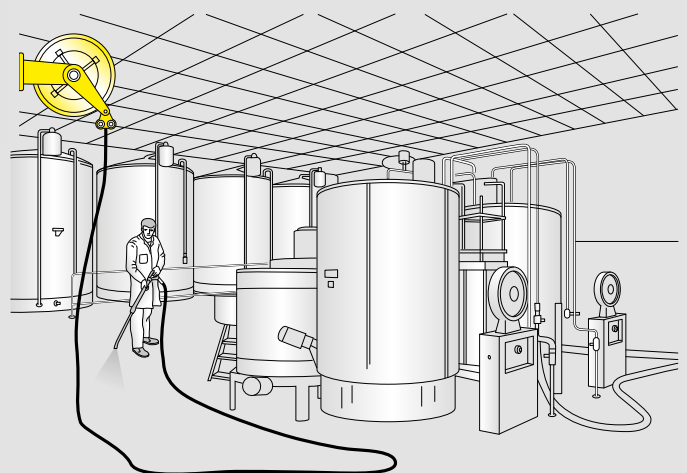
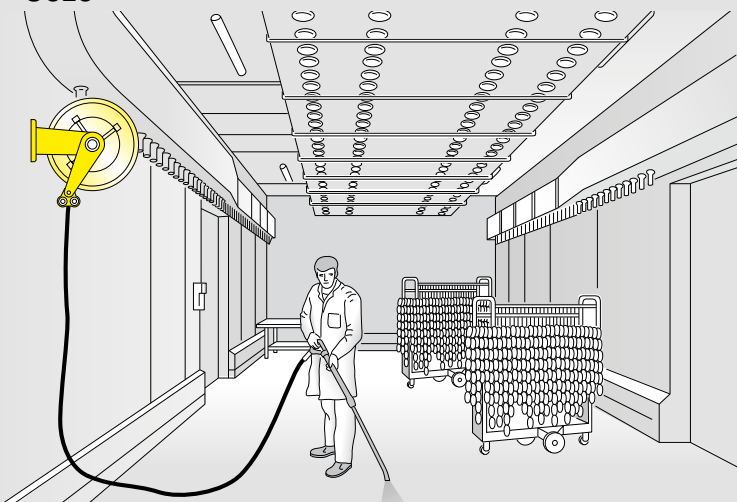
Rubber handles, mounted on hose terminal part, are available for all the above series. For more information look at page 50.



Atex 94/9

- II 3GD c X (only for series 300-350-4430 ABS)
- IIB 2GD c T4 T135°C X

USES



For the SWIVELLING version add the suffix "/SO" at the P/N, except for the 560 series.
For example:
300/40/SO

FIXED PAINTED STEEL

FIXED S. STEEL AISI 304

Supplied with:

- hose in black synthetic rubber with galvanized steel coupling
- swivel joint in galvanized steel or s. steel AISI 304
- "Polyurethane" seals
- central shaft in galvanized steel or stainless steel AISI 304
- inlet hose 0,6 m to connect the hose reel to the system (standard on the versions with hose)



		P/N	P/N	Hose supplied	Connection	
					Inlet	Outlet
150 bar	S. 300	300/40	302/40	without hose	F 1/2"G	F 3/8" - 1/2"G
		300/41	302/41	8m 1/2" (963/8)	F 1/2"G	M 1/2"G
		300/42	302/42	12m 3/8" (953/12)	F 1/2"G	M 1/2"G
	S. 350	350/40	352/40	without hose	F 1/2"G	F 3/8" - 1/2"G
		350/41	352/41	10m 1/2" (963/10)	F 1/2"G	M 1/2"G
		350/42	352/42	17m 3/8" (953/17)	F 1/2"G	M 1/2"G
		350/43	352/43	12m 3/8" (953/12)	F 1/2"G	M 1/2"G
	S. 430	430/40	434/20	without hose	F 1/2"G	F 1/2"G
		430/41	432/41	10m 1/2" (963/11)	F 1/2"G	M 1/2"G
		430/42	432/42	15m 1/2" (963/15)	F 1/2"G	M 1/2"G
	S. 4430 ABS	4430/40	4434/20	without hose	F 1/2"G	F 1/2"G
		4430/41	4432/41	10m 1/2" (963/11)	F 1/2"G	M 1/2"G
		4430/42	4432/42	15m 1/2" (963/15)	F 1/2"G	M 1/2"G
	S. 530	530/40	534/20	without hose	F 1/2"G	F 1/2"G
		530/41	532/41	20m 1/2" (963/20)	F 1/2"G	M 1/2"G
		530/42	532/42	25m 1/2" (963/25)	F 1/2"G	M 1/2"G
	S. 540	540/45	544/25	without hose	F 1/2"G	F 1/2"G
		540/46	542/46	30m 1/2" (963/30)	F 1/2"G	M 1/2"G
S. 560	560/46	564/26	without hose	F 1/2"G	F 1/2"G	
	560/47	-	40m 1/2" (963/40)	F 1/2"G	M 1/2"G	
	560/48	-	50m 1/2" (963/50)	F 1/2"G	M 1/2"G	
	560/49	-	60m 1/2" (963/60)	F 1/2"G	M 1/2"G	
100 bar	S. 430	430/415	-	without hose	F 1/2"G	M 1/2"G
		430/416	-	10m 5/8" (993/310)	F 3/4"G	M 3/4"G
		430/417	-	8m 3/4" (973/308)	F 3/4"G	M 3/4"G
	S. 4430 ABS	4430/415	-	without hose	F 1/2"G	M 1/2"G
		4430/416	-	10m 5/8" (993/310)	F 3/4"G	M 3/4"G
		4430/417	-	8m 3/4" (973/308)	F 3/4"G	M 3/4"G
	S. 530	530/415	-	without hose	F 1"G	F 1"G
		530/416	-	12m 3/4" (973/312)	F 3/4"G	M 3/4"G
	S. 540	540/40	544/20	without hose	F 1"G	F 1"G
		540/411	-	15m 3/4" (973/315)	F 3/4"G	M 3/4"G
540/412		-	20m 3/4" (973/320)	F 3/4"G	M 3/4"G	
S. 560	560/40	564/20	without hose	F 1"G	F 1"G	
	560/411	-	30m 3/4" (973/330)	F 3/4"G	M 3/4"G	
	560/413	-	40m 3/4" (973/340)	F 3/4"G	M 3/4"G	
50 bar	S. 540	540/413	-	15m 1" (983/315)	F 1"G	M 1"G
		540/414	-	10m 1" (983/310)	F 1"G	M 1"G
	S. 560	560/414	-	20m 1" (983/320)	F 1"G	M 1"G
		560/415	-	30m 1" (983/330)	F 1"G	M 1"G


Atex 94/9

- II 3GD c X (only for series 300-350-4430 ABS)
- IIB 2GD c T4 T135°C X

Grease 400 - 600 bar

For the SWIVELLING version add the suffix "/SO" at the P/N.
For example: 300/51/SO

FIXED PAINTED STEEL



FIXED S. STEEL AISI 304



Supplied with:

- hose in black synthetic rubber with galvanized steel coupling
- swivel joint in galvanized steel or s. steel AISI 304
- "Polyurethane" seals
- central shaft in galvanized steel or stainless steel AISI 304
- inlet hose 0,6 m to connect the hose reel to the system (standard on the versions with hose)



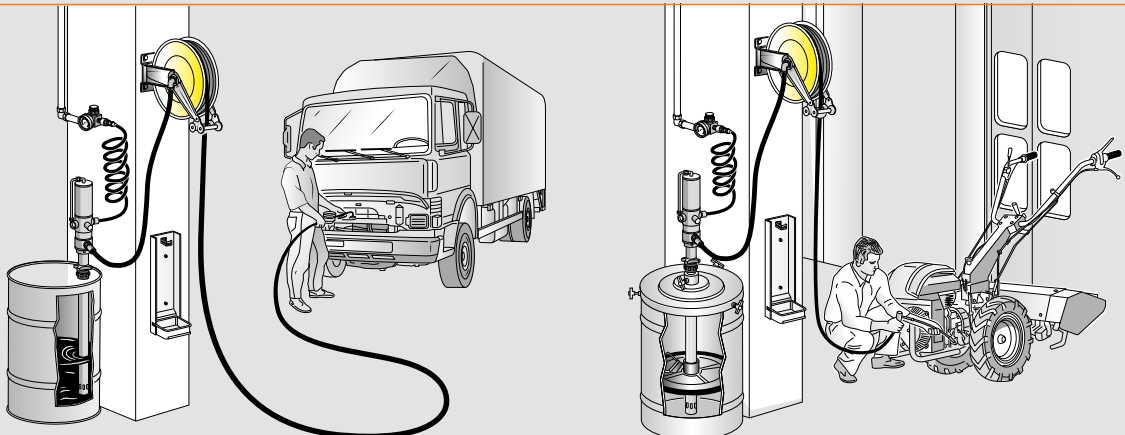
		P/N	P/N	Hose supplied	Connection	
					Inlet	Outlet
400 bar	S. 300	300/50	302/50	without hose	F 3/8"G	F 3/8"G
		300/51	302/51	12m 1/4" (935/12)	F 3/8"G	M 1/4"G
	S. 350	350/50	352/50	without hose	F 3/8"G	F 3/8"G
		350/51	352/51	12m 1/4" (935/12)	F 3/8"G	M 1/4"G
		350/52	352/52	16m 1/4" (935/16)	F 3/8"G	M 1/4"G
	S. 430	430/50	432/50	without hose	F 3/8"G	F 1/2"G
		430/51	432/51	12m 1/4" (935/13)	F 3/8"G	M 1/4"G
		430/52	432/52	18m 1/4" (935/18)	F 3/8"G	M 1/4"G
		430/55	432/55	10m 3/8" (957/10)	F 3/8"G	M 1/4"G
		430/56	432/56	15m 3/8" (957/15)	F 3/8"G	M 1/4"G
	S. 4430 ABS	4430/50	4432/50	without hose	F 3/8"G	F 1/2"G
		4430/51	4432/51	12m 1/4" (935/13)	F 3/8"G	M 1/4"G
		4430/52	4432/52	18m 1/4" (935/18)	F 3/8"G	M 1/4"G
		4430/55	4432/55	10m 3/8" (957/10)	F 3/8"G	M 1/4"G
		4430/56	4432/56	15m 3/8" (957/15)	F 3/8"G	M 1/4"G
	S. 530	530/50	532/50	without hose	F 3/8"G	F 1/2"G
		530/51	532/51	20m 3/8" (957/20)	F 3/8"G	M 1/4"G
		530/52	532/52	25m 3/8" (957/25)	F 3/8"G	M 1/4"G
	S. 540	540/50	542/50	without hose	F 3/8"G	F 1/2"G
		540/51	542/51	30m 3/8" (957/30)	F 3/8"G	M 1/4"G



Atex 94/9

- ▶ II 3GD c X (only for series 300-350-4430 ABS)
- ▶ IIB 2GD c T4 T135°C X

USES



For the SWIVELLING version add the suffix "/SO" at the P/N, except for the 560 series.
For example:
430/60/SO

FIXED PAINTED STEEL

FIXED S. STEEL AISI 304

Supplied with:

- hose in antistatic EPDM black synthetic rubber with galvanized steel coupling
- brass swivel joint
- "Viton" seals
- central shaft in galvanized steel or stainless steel
- inlet hose 0,6 m to connect the hose reel to the system (standard on the versions with hose)



	P/N	P/N	Hose supplied	Connection	
				Inlet	Outlet
S. 430	430/60	-	without hose*	F 1/2"G	M 1/2"G
	430/61	-	10m 5/8" (968/20)	F 3/4"G	M 3/4"G
	430/62	-	8m 3/4" (968/25)	F 3/4"G	M 3/4"G
S. 4430 ABS	4430/60	-	without hose*	F 1/2"G	M 1/2"G
	4430/61	-	10m 5/8" (968/20)	F 3/4"G	M 3/4"G
	4430/62	-	8m 3/4" (968/25)	F 3/4"G	M 3/4"G
S. 530	530/60	-	without hose*	F 1"G	F 1"G
	530/63	-	12m 19x27 (978/12)	F 1"G	M 3/4"G
	530/64	-	8m 25x35 (988/8)	F 1"G	M 1"G
S. 540	540/10	542/10	without hose*	F 1"G	F 1"G
	540/61	542/61	15m 19x27 (978/15)	F 1"G	M 3/4"G
	540/62	542/62	20m 19x27 (978/20)	F 1"G	M 3/4"G
	540/63	542/63	15m 25x35 (988/15)	F 1"G	M 1"G
S. 560	560/10	562/10	without hose*	F 1"G	F 1"G
	560/63	562/63	40m 19x27 (978/40)	F 1"G	M 3/4"G
	560/64	562/64	20m 25x35 (988/20)	F 1"G	M 1"G
	560/65	562/65	30m 25x35 (988/30)	F 1"G	M 1"G

* for the version without hose the maximum work pressure is 20 bar



Atex 94/9

- ▶ II 3GD c X (per serie 4430 ABS)
- ▶ IIB 2GD c T4 T135°C X

AD blue 10 bar

For the SWIVELLING version add the suffix "/SO" at the P/N.
For example:
436/20/SO

FIXED PAINTED STEEL

FIXED S. STEEL AISI

Supplied with:

- hose in antistatic EPDM rubber with AISI 304 stainless steel coupling
- AISI 304 - 316L stainless steel swivel joint
- "Viton" seals
- central shaft in stainless steel AISI 304
- inlet hose 0,6 m to connect the hose reel to the system (standard on the versions with hose)



	P/N	P/N	Fluid contact parts	Hose supplied	Connection	
					Inlet	Outlet
S. 436	436/20	-	AISI 316L	without hose*	F 1"G	F 3/4"G
S. 436	436/250	-	AISI 304	without hose*	F 3/4"G	F 3/4"G
	436/251	-	AISI 304	10m 19x27 (882/10)	F 3/4"G	M 3/4"G
	436/252	-	AISI 304	15m 19x27 (882/15)	F 3/4"G	M 3/4"G
S. 4436 ABS	4436/20	-	AISI 304	without hose*	F 1/2"G	F 1/2"G
	4436/21	-	AISI 304	8m 19x27 (882/8)	F 3/4"G	M 3/4"G
S. 537	-	537/20	AISI 316L	without hose*	F 1"G	F 3/4"G
S. 537	-	534/250	AISI 304	without hose*	F 1"G	F 1"G
	-	537/251	AISI 304	10m 19x27 (882/10)	F 3/4"G	M 3/4"G
	-	537/252	AISI 304	15m 19x27 (882/15)	F 3/4"G	M 3/4"G

* for the version without hose the maximum work pressure is 20 bar



Atex 94/9

- ▶ II 3GD c X (per serie 4430 ABS)
- ▶ IIB 2GD c T4 T135°C X

Welding 20 bar

For the SWIVELLING version add the suffix "/SO" at the P/N.
For example:
430/70/SO

FIXED PAINTED STEEL



Supplied with:

- double hose Standard EN559, hose SBR/EPDM rubber with brass coupling
- brass swivel joint
- "Viton" seals
- central shaft in galvanized steel
- inlet hose 1,5 m to connect the hose reel to the system (standard on the versions with hose)

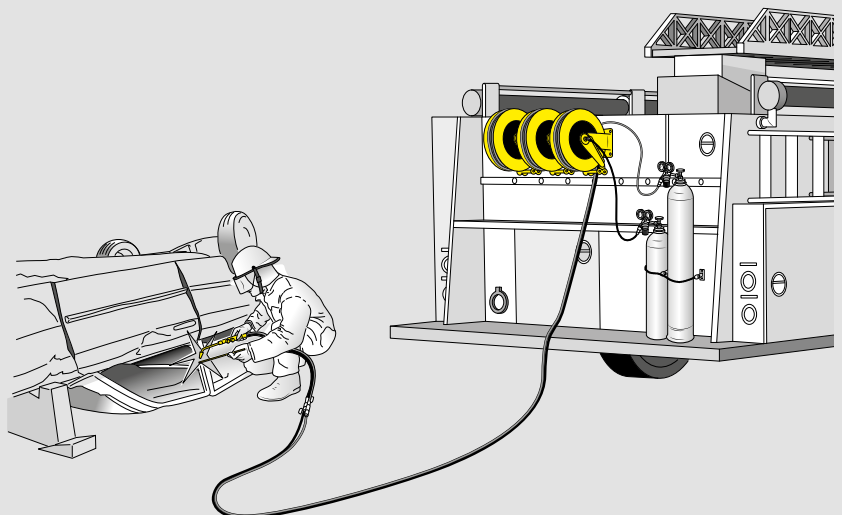
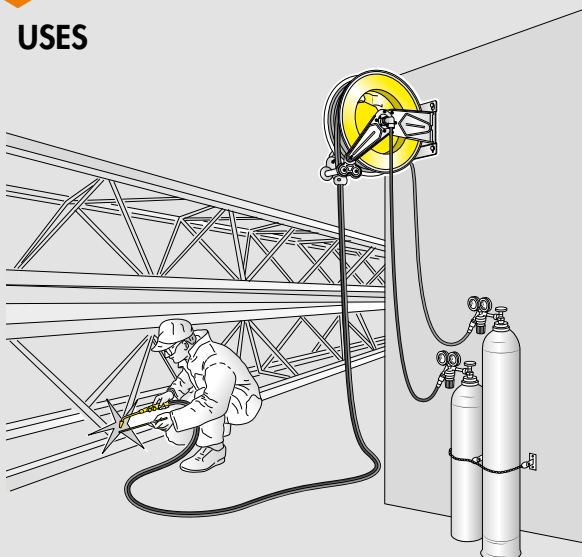


	P/N	Hose supplied double	Connection	
			Inlet	Outlet
S. 430	430/70	without hose	M 3/8"G	M 3/8"G
	430/71	13m 2x1/4"-2x6 (993/13)	F 3/8"G	F 3/8"G
	430/72	12m 2x5/16"-2x8 (994/12)	F 3/8"G	F 3/8"G
S. 530	530/70	without hose	M 3/8"G	M 3/8"G
	530/71	17m 2x1/4"-2x6 (993/17)	F 3/8"G	F 3/8"G
	530/72	20m 2x1/4"-2x6 (993/20)	F 3/8"G	F 3/8"G
	530/73	15m 2x5/16"-2x8 (994/15)	F 3/8"G	F 3/8"G
	530/74	20m 2x5/16"-2x8 (994/20)	F 3/8"G	F 3/8"G
	530/75	15m 2x3/8"-2x9 (995/15)	F 3/8"G	F 3/8"G
S. 540	540/70	without hose	M 3/8"G	M 3/8"G
	540/71	25m 2x1/4"-2x6 (993/25)	F 3/8"G	F 3/8"G
	540/72	30m 2x1/4"-2x6 (993/30)	F 3/8"G	F 3/8"G
	540/73	35m 2x1/4"-2x6 (993/35)	F 3/8"G	F 3/8"G
	540/74	25m 2x5/16"-2x8 (994/25)	F 3/8"G	F 3/8"G
	540/75	30m 2x5/16"-2x8 (994/30)	F 3/8"G	F 3/8"G
	540/76	35m 2x5/16"-2x8 (994/35)	F 3/8"G	F 3/8"G
	540/77	20m 2x3/8"-2x9 (995/20)	F 3/8"G	F 3/8"G
	540/78	25m 2x3/8"-2x9 (995/25)	F 3/8"G	F 3/8"G
540/79	27m 2x3/8"-2x9 (995/27)	F 3/8"G	F 3/8"G	



Atex 94/9 ▶ II 3GD c (T5) T100°C X

USES



For the SWIVELLING version add the suffix "/SO" at the P/N.

For example:
300/80/SO

FIXED PAINTED STEEL



Supplied with:

- NBR orange hose Standard EN559 with brass coupling
- brass swivel joint
- "Viton" seals
- central shaft in galvanized steel
- inlet hose 1,5 m to connect the hose reel to the system (standard on the versions with hose)



	P/N	Hose supplied	Connection	
			Inlet	Outlet
S. 300	300/80	without hose	M 3/8"G LH	M 3/8"G LH
	300/81	8m 8x15 (949/8)	F 3/8"G LH	F 3/8"G LH
	300/82	10m 10x17 (959/10)	F 3/8"G LH	F 3/8"G LH
S. 350	350/80	without hose	M 3/8"G LH	M 3/8"G LH
	350/81	15m 8x15 (949/15)	F 3/8"G LH	F 3/8"G LH
	350/82	15m 10x17 (959/15)	F 3/8"G LH	F 3/8"G LH
S. 430	430/80	without hose	M 3/8"G LH	M 3/8"G LH
	430/82	20m 8x15 (949/20)	F 3/8"G LH	F 3/8"G LH
	430/84	18m 10x17 (959/18)	F 3/8"G LH	F 3/8"G LH
S. 530	530/80	without hose	M 3/8"G LH	M 3/8"G LH
	530/82	28m 8x15 (949/28)	F 3/8"G LH	F 3/8"G LH
	530/84	27m 10x17 (959/27)	F 3/8"G LH	F 3/8"G LH
S. 540	540/80	without hose	M 3/8"G LH	M 3/8"G LH
	540/82	30m 10x17 (959/30)	F 3/8"G LH	F 3/8"G LH

L-H: left hand thread



Atex 94/9 ▶ II 3GD c (T5) T100°C X

Suction waste oil

For the SWIVELLING version add the suffix "/SO" at the P/N.

For example:
430/40/AS/SO

FIXED PAINTED STEEL



FIXED PAINTED STEEL



Supplied with:

- hose in black synthetic rubber with galvanized steel coupling
- brass swivel joint
- "Viton" seals
- inlet hose 2 m to connect the hose reel to the system (standard on the versions with hose)



	P/N	P/N	Hose supplied	Connection	
				Inlet	Outlet
S. 430	430/40/AS	-	without hose	F 1/2"G	F 3/8"G
	430/41/AS	-	10m 1/2" (963/11)	F 1/2"G	M 1/2"G
	430/415/AS	-	without hose	F 1"G	F 1"G
S. 4430 ABS	4430/40/AS	-	without hose	F 1/2"G	F 3/8"G
S. 440 enclosed	-	440/41/AS	10m 1/2" (963/11)	F 1/2"G	M 1/2"G



Atex 94/9 ▶ IIB 2GD c T4 T135°C X
▶ II 3GD c X (per serie 4430 ABS)

Double inlet and outlet

For the SWIVELLING version add the suffix "/SO" at the P/N.
For example:
430/100/SO

FIXED PAINTED STEEL



Supplied with:

- hose with outlet coupling in brass or in stainless steel AISI 304
- swivel joint in brass, galvanized steel or stainless steel AISI 304
- "Viton" or "Polyurethane" seals
- central shaft in galvanized steel

		P/N	Provided with		Connection	
			2 Swivels	Seals	Inlet	Outlet
S. 430	Air-Water 20 bar	430/100	brass	Viton	F 1/2"G	M 3/8"G
	Oil-Water 200 bar	430/300	stainless steel AISI 304	Viton	F 3/8"G	M 3/8"G
	Oil-Paint 200 bar	430/400	galvanised steel	Polyurethane	F 1/2"G	M 3/8"G
	Oil 400 bar	430/500	galvanised steel	Polyurethane	F 3/8"G	M 3/8"G
	Water max 130°C 400 bar	430/5500	stainless steel AISI 304	Teflon	F 3/8"G	M 3/8"G
S. 530	Air-Water 20 bar	530/100	brass	Viton	F 1/2"G	M 3/8"G
	Oil-Water 200 bar	530/300	stainless steel AISI 304	Viton	F 3/8"G	M 3/8"G
	Oil-Paint 200 bar	530/400	galvanised steel	Polyurethane	F 1/2"G	M 3/8"G
	Oil 400 bar	530/500	galvanised steel	Polyurethane	F 3/8"G	M 3/8"G
	Water max 130°C 400 bar	530/5500	stainless steel AISI 304	Teflon	F 3/8"G	M 3/8"G
S. 540	Air-Water 20 bar	540/100	brass	Polyurethane	F 1/2"G	M 3/8"G
	Oil-Water 200 bar	540/300	stainless steel AISI 304	Viton	F 3/8"G	M 3/8"G
	Oil-Paint 200 bar	540/400	brass	Viton	F 1/2"G	M 3/8"G
	Oil 400 bar	540/500	brass	Polyurethane	F 3/8"G	M 3/8"G
	Water max 130°C 400 bar	540/5500	stainless steel AISI 304	Teflon	F 3/8"G	M 3/8"G



Atex 94/9 ▶ IIB 2GD c T4 T135°C X

USES



For the SWIVELLING version add the suffix "/SO" at the P/N, except for the 560 series.
For example:
434/20/SO

FIXED S. STEEL AISI 304



Supplied with:

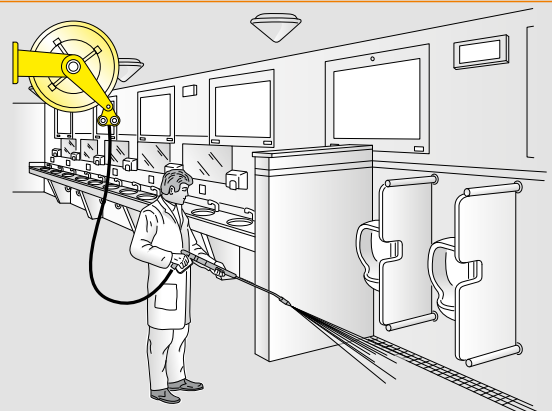
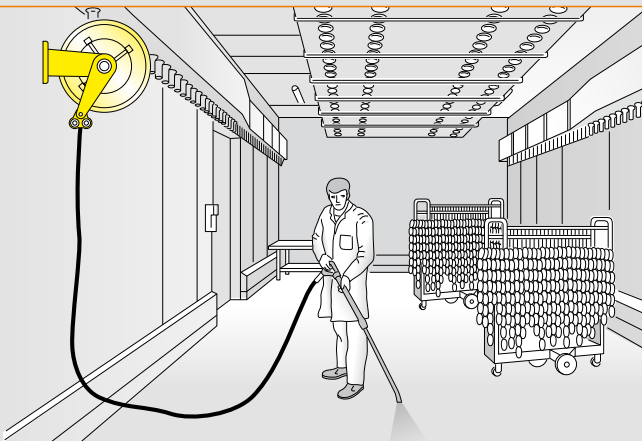
- AISI 304 stainless steel swivel joint
- "Viton" or "Teflon" seals
- central shaft in stainless steel AISI 304

	P/N	Hose supplied	Connection		
			Inlet	Outlet	
S. 430	Water max 130 °C 100 bar	434/20	without hose	F 1/2"G	F 1/2"G
	Water max 130 °C 200 bar	434/30	without hose	F 3/8"G	F 1/2"G
	Water max 130 °C 400 bar	434/35	without hose	F 3/8"G	F 1/2"G
S. 530	Water max 130 °C 100 bar	534/20	without hose	F 1/2"G	F 1/2"G
		534/250	without hose	F 1"G	F 1"G
	Water max 130 °C 200 bar	534/30	without hose	F 3/8"G	F 1/2"G
	Water max 130 °C 400 bar	534/35	without hose	F 3/8"G	F 1/2"G
	Water max 130°C 700 bar	534/550	without hose	F 3/8"G	F 1/2"G
S. 540	Water max 130 °C 100 bar	544/20	without hose	F 1"G	F 1"G
		544/25	without hose	F 1/2"G	F 1/2"G
	Water max 130 °C 200 bar	544/30	without hose	F 3/8"G	F 1/2"G
	Water max 130 °C 400 bar	544/35	without hose	F 3/8"G	F 1/2"G
	Water max 130°C 700 bar	544/550	without hose	F 3/8"G	F 1/2"G
S. 560	Water max 130 °C 100 bar	564/20	without hose	F 1"G	F 1"G
		564/26		F 1/2"G	F 1/2"G
	Water max 130 °C 200 bar	564/30	without hose	F 3/8"G	F 1/2"G
	Water max 130 °C 400 bar	564/35	without hose	F 3/8"G	F 1/2"G



Atex 94/9 IIB 2GD c T4 T135°C X

USES



FIXED S. STEEL AISI 304



Supplied with:

- AISI 316 stainless steel swivel joint
- "Viton" seals
- central shaft in stainless steel AISI 316

	P/N	Hose supplied	Connection	
			Inlet	Outlet
S. 430	435/20	without hose	F 1/2"G	F 1/2"G

S. 530	535/20	without hose	F 1/2"G	F 1/2"G
--------	--------	--------------	---------	---------

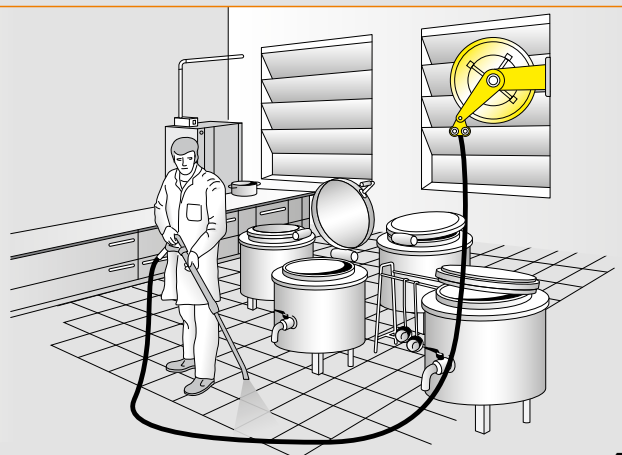
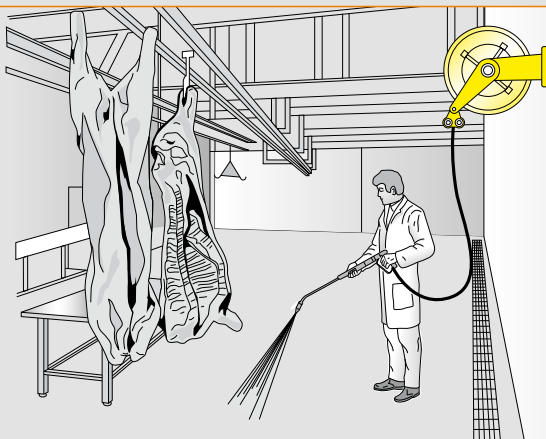
S. 540	545/20	without hose	F 1"G	F 1"G
	545/25	without hose	F 1/2"G	F 1/2"G

S. 560	565/20	without hose	F 1"G	F 1"G
	565/26	without hose	F 1/2"G	F 1/2"G



Atex 94/9 IIB 2GD c T4 T135°C X

USES



For the SWIVELLING version add the suffix "/SO" at the P/N.
For example:
440/10/SO

FIXED PAINTED STEEL



Supplied with:

- hose in black synthetic rubber with galvanized steel coupling
- swivel joint in brass or galvanized steel
- "Viton" or "Polyurethane" seals
- central shaft in galvanized steel
- inlet hose from 0,6 m to 1 m to connect the hose reel to the system (standard on the versions with hose)



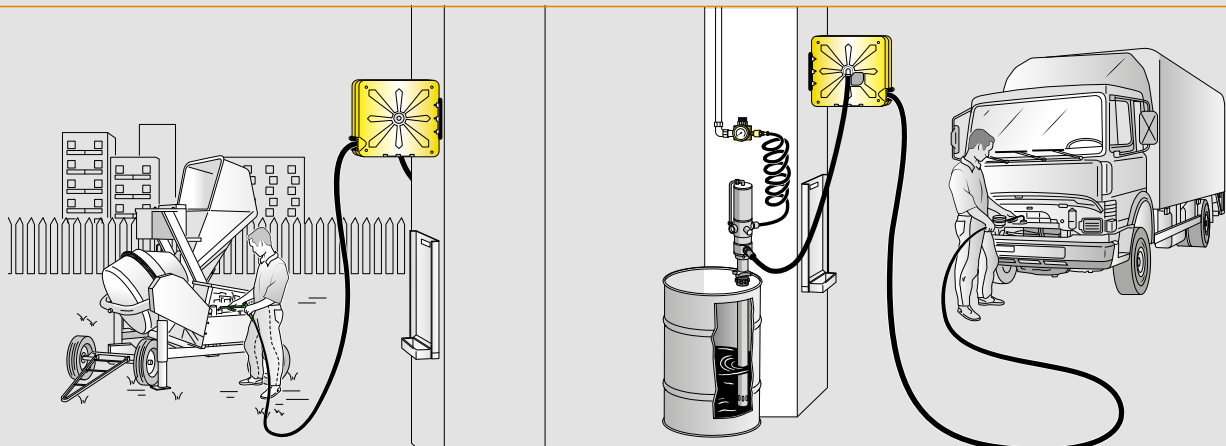
	P/N	Hose supplied	Connection		
			Inlet	Outlet	
S. 440	Air-Water 20 bar	440/10	without hose	F 1/2"G	F 1/2"G
		440/11	15m 1/2" (962/15)	F 1/2"G	M 1/2"G
		440/12	12m 3/8" (952/13)	F 1/2"G	M 3/8"G
		440/13	18m 3/8" (952/19)	F 1/2"G	M 3/8"G
		440/14	10m 1/2" (962/10)	F 1/2"G	M 1/2"G
S. 4440 ABS	Air-Water 20 bar	4440/10	without hose	F 1/2"G	F 1/2"G
		4440/11	15m 1/2" (962/15)	F 1/2"G	M 1/2"G
		4440/12	12m 3/8" (952/13)	F 1/2"G	M 3/8"G
		4440/13	18m 3/8" (952/19)	F 1/2"G	M 3/8"G
		4440/14	10m 1/2" (962/10)	F 1/2"G	M 1/2"G
S. 440	Oil 150 bar	440/40	without hose	F 1/2"G	F 1/2"G
		440/41	10m 1/2" (963/11)	F 1/2"G	M 1/2"G
		440/42	15m 1/2" (963/15)	F 1/2"G	M 1/2"G
S. 4440 ABS	Oil 150 bar	4440/40	without hose	F 1/2"G	F 1/2"G
		4440/41	10m 1/2" (963/11)	F 1/2"G	M 1/2"G
		4440/42	15m 1/2" (963/15)	F 1/2"G	M 1/2"G
S. 440	Grease 400 bar	440/50	without hose	F 3/8"G	F 1/2"G
		440/51	12m 1/4" (935/13)	F 3/8"G	M 1/4"G
		440/52	18m 1/4" (935/18)	F 3/8"G	M 1/4"G
		440/55	10m 3/8" (957/10)	F 3/8"G	M 1/4"G
		440/56	15m 3/8" (957/15)	F 3/8"G	M 1/4"G
S. 4440 ABS	Grease 400 bar	4440/50	without hose	F 3/8"G	F 1/2"G
		4440/51	12m 1/4" (935/13)	F 3/8"G	M 1/4"G
		4440/52	18m 1/4" (935/18)	F 3/8"G	M 1/4"G
		4440/55	10m 3/8" (957/10)	F 3/8"G	M 1/4"G
		4440/56	15m 3/8" (957/15)	F 3/8"G	M 1/4"G



Atex 94/9

- ▶ II 3GD c X (only for S. 4440 ABS and S. 440 Air-Water 20 bar)
- ▶ IIB 2GD c T4 T135°C X

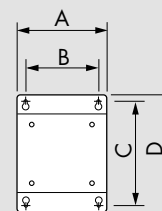
USES



Accessories



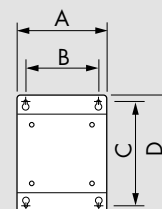
Art. 430/01	Galvanized steel fixed bracket suitable for hose reels Series 270 - 300 - 350 - 430 4430 ABS
Art. 430/02	Stainless steel AISI 304 fixed bracket suitable for hose reels Series 270 - 300 - 350 - 430 4430 ABS
Art. 440/01	Galvanized steel fixed bracket suitable for hose reels Series 440 - 4440 ABS
Art. 530/01	Galvanized steel fixed bracket suitable for hose reels Series 530
Art. 530/02	Stainless steel AISI 304 fixed bracket suitable for hose reels Series 530
Art. 540/01	Galvanized steel fixed bracket suitable for hose reels Series 540
Art. 540/02	Stainless steel AISI 304 fixed bracket suitable for hose reels Series 540



P/N	A	B	C	D
430/01	186	152	264	294
430/02	186	152	264	294
440/01	217	187	267	292
530/01	203	160	302	338
530/02	203	160	302	338
540/01	300	220	300	340
540/02	300	220	300	340



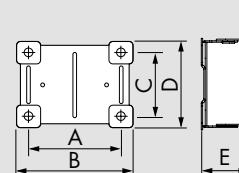
Art. 560/01	Galvanized steel fixed bracket suitable for hose reels Series 560
Art. 560/02	Stainless steel AISI 304 fixed bracket suitable for hose reels Series 560



P/N	A	B	C	D
560/01	488	399	313	347
560/02	488	399	313	347



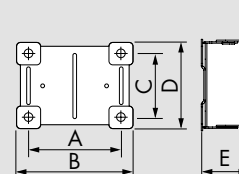
Art. 430/05	Painted steel swivelling bracket suitable for hose reels Series 270 - 300 - 350 - 430 436 - 4436 ABS - 4430 ABS
Art. 430/06	Stainless steel AISI 304 swivelling bracket suitable for hose reels Series 270 - 300 - 350 430 - 4430 ABS
Art. 440/05	Painted steel swivelling bracket in steel suitable for hose reels Series 440 - 4440 ABS
Art. 530/05	Painted steel swivelling bracket in steel suitable for hose reels Series 530
Art. 530/06	Stainless steel AISI 304 swivelling bracket suitable for hose reels Series 530 - 537



P/N	A	B	C	D	E
430/05	162	208	118	165	94
430/06	162	208	118	165	94
440/05	162	208	118	165	94
530/05	162	208	118	165	94
530/06	162	208	118	165	94



Art. 540/05	Painted steel swivelling bracket in steel suitable for hose reels Series 540
Art. 540/06	Stainless steel AISI 304 swivelling bracket suitable for hose reels Series 540



P/N	A	B	C	D	E
540/05	218	300	226	268	129
540/06	218	300	226	268	129



P/N OE33105	Galvanized steel Nipple M 1" x M 1.1/4" G	●
P/N OE33114	Galvanized steel Nipple M 1" x M 1/2" G	●
P/N OE33116	Galvanized steel Nipple M 1" x M 1" G	●
P/N OE33117	Galvanized steel Nipple M 3/4" x M 3/4" G	●
P/N OE33118	Galvanized steel Nipple M 1/2" x M 3/4" G	●
P/N OE33119	Galvanized steel Nipple M 1" x M 3/4" G	●
P/N OE33270	Galvanized steel Nipple M 1.1/2" x M 3/4" G	●
P/N OE33271	Galvanized steel Nipple M 1.1/2" x M 1" G	●
P/N OE33272	Galvanized steel Nipple M 1.1/2" x M 1.1/4" G	●
P/N OE33273	Galvanized steel reduction M 1.1/2" x F 1.1/4" G	●
P/N OE33274	Galvanized steel reduction M 1" x F 1/2" G	●
P/N OE33275	Galvanized steel reduction F 3/4" x M 1/2" G	●
P/N OE33276	Galvanized steel reduction F 1" x M 3/4" G	●
P/N OE33277	Galvanized steel reduction M 3/4" x F 1/2" G	●
P/N OE38059	Galvanized steel Nipple M 1/4" x M 1/2" G	●●
P/N OE38068	Galvanized steel Nipple M 3/8" x M 1/2" G	●●
P/N OE38071	Galvanized steel Nipple M 1/2" x M 1/2" G	●●
P/N OE38072	Galvanized steel Nipple M 1/2" x M 3/8" G	●
P/N OE38073	Galvanized steel Nipple M 3/8" x M 3/8" G	●●
P/N OE38074	Galvanized steel Nipple M 1/2" x M 1/2" G	●
P/N OE66891	Galvanized steel Nipple M 1/4" x M 1/4" G	●●
P/N OE66892	Galvanized steel Nipple M 1/4" x M 3/8" G	●
P/N OE66893	Galvanized steel Nipple M 1/2" x M 1/4" G	●
		cylindrical/cylindrical thread ● tapered/cylindrical thread ●●

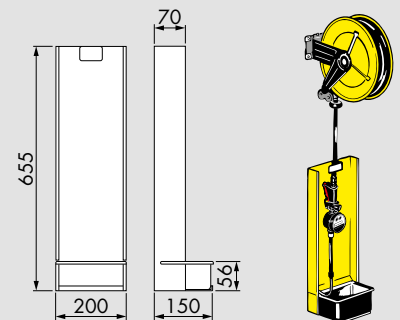


P/N OE33128	Nipple Stainless steel AISI 304 M 1" x M 3/4" G	●
P/N OE33129	Nipple Stainless steel AISI 304 M 1" x M 1" G	●
P/N OE33130	Nipple Stainless steel AISI 304 M 3/4" x M 3/4" G	●
P/N OE33131	Nipple Stainless steel AISI 316 M 1" x M 3/4" G	●
P/N OE33132	Nipple Stainless steel AISI 316 M 1" x M 1" G	●
P/N OE33133	Nipple Stainless steel M 1" x M 3/4" G	●
P/N OE38120	Nipple Stainless steel AISI 304 M 1/2" x M 3/8" G	●
P/N OE38121	Nipple Stainless steel AISI 304 M 1/2" x M 1/2" G	●●
P/N OE38123	Nipple Stainless steel AISI 304 M 1/2" G x M 3/8" G	●●
P/N OE38124	Nipple Stainless steel AISI 304 M 1/2" G x M 1/2" G	●●
		cylindrical/cylindrical thread ● tapered/cylindrical thread ●●



Art. 900

Modular drip-tray for hose reel:
Equipped with gun hook and removable tray.
Indispensable, applied under any hose-reel for
holding the gun, and for keeping the wall and
place clean and safe.

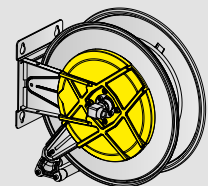


Art. 430/08

Latch mechanism protective cover rack side
hose reels Series 430 - 436 - 437

Art. 530/08

Latch mechanism protective cover rack side hose
reels Series 530 - 536 - 537 - 540 - 560



Special rubber protection mounted on hose end may be available on request for hose reels for air-water
20 bar, and for water up to 400 bar. This accessory helps to protect the hands of the operator when water
is hot, avoiding at the same time extreme hose bending. Available for hoses with 1/2" ID or smaller.
To order the hose with this protection please add the suffix "/CM" at the P/N. For example 430/21
becomes 430/21/CM.

Hose specifications

The range of hoses offered by ECODORA for its hose reels is in line with company's quality standards and guarantees excellent performance in the applications with the pressures specified in the catalogue. For conditions different from those recommended, ECODORA is available to appraise every aspect of the application context (compatibility of the materials used with the fluid, temperature of use, working pressure, etc.) together with the customer for identifying the right hose for each specific case.

The hoses mounted on the hose reels must support the max working pressure indicated on the label of each hose reels.



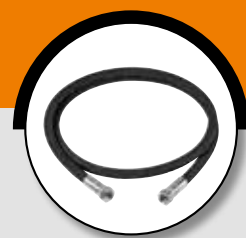
Inlet connection hoses connecting hose reel to the system or to equipment



P/N	Length	Pressure	ø mm Inside - Outside	Connection		
				Inlet	Outlet	Material
882/06	0,6 m	3/4" - rubber EPDM antistatic - 10 bar	19 x 27	F 3/4"G	M 1"G	s. steel AISI 304
906/06	0,6 m	3/8" - hygienic - 400 bar	9,5 x 17,5	F 3/8"G	M 3/8"G	galvanized steel
907/06	0,6 m	3/8" - black rubber - 400 bar	9,5 x 17,5	F 3/8"G	M 3/8"G	galvanized steel
932/1	1 m	1/4" - black rubber - 20 bar	6,3 x 17,5	F 1/4"G	M 1/4"G	galvanized steel
932/2	2 m	1/4" - black rubber - 20 bar	6,3 x 17,5	F 1/4"G	M 1/4"G	galvanized steel
935/4	4 m	1/4" - black rubber - 400 bar	6,3 x 17,5	F 1/4"G	M 1/4"G	galvanized steel
952/06	0,6 m	3/8" - black rubber - 20 bar	9,5 x 16	F 3/8"G	M 3/8"G	galvanized steel
955/06	0,6 m	3/8" - black rubber - 200 bar	9,5 x 17	F 3/8"G	M 3/8"G	galvanized steel
956/06	0,6 m	3/8" - hygienic - 200 bar	9,5 x 17	F 3/8"G	M 3/8"G	galvanized steel
957/06	0,6 m	3/8" - black rubber - 600 bar	9,5 x 18	F 3/8"G	M 3/8"G	galvanized steel
959/2	1,5 m	3/8" - NBR-PVC - EN 559 - 20 bar	10 x 17	F 3/8"G-LH	F 3/8"G-LH	brass
960/06	0,6 m	1/2" - hygienic - 20 bar	12,7 x 20	F 1/2"G	M 1/2"G	galvanized steel
963/05	0,6 m	1/2" - black rubber - 100 bar	12,7 x 20	F 1/2"G	M 1/2"G	galvanized steel
963/06	0,6 m	1/2" - black rubber - 150 bar	12,7 x 19	F 1/2"G	M 1/2"G	galvanized steel
963/1	1 m	1/2" - black rubber - 100 bar	12,7 x 18,5	F 1/2"G	M 1/2"G	galvanized steel
963/2	2 m	1/2" - black rubber - 100 bar	12,7 x 18,5	F 1/2"G	M 1/2"G	galvanized steel
963/4	4 m	1/2" - black rubber - 100 bar	12,7 x 18,5	F 1/2"G	M 1/2"G	galvanized steel
964/06	0,6 m	1/2" - hygienic - 100 bar	12,7 x 20	F 1/2"G	M 1/2"G	galvanized steel
973/305	5 m	3/4" - black rubber - 100 bar	19 x 26,5	F 3/4"G	M 3/4"G	galvanized steel
973/306	0,6 m	3/4" - black rubber - 100 bar	19 x 26,5	F 3/4"G	M 1/2"G	galvanized steel
980/06	0,6 m	1" - hygienic - 20 bar	25,4 x 33,5	F 1"G	M 1"G	galvanized steel
983/05	0,6 m	1" - black rubber - 100 bar	25,4 x 33,5	F 1"G	M 1"G	galvanized steel
983/301	1 m	1" - black rubber - 50 bar	25,4 x 35,5	F 1"G	M 1"G	galvanized steel
983/302	2 m	1" - black rubber - 50 bar	25,4 x 35,5	F 1"G	M 1"G	galvanized steel
983/306	0,6 m	1" - black rubber - 50 bar	25,4 x 35,5	F 1"G	M 1"G	galvanized steel
984/06	0,6 m	1" - hygienic - 50 bar	25,4 x 33,5	F 1"G	M 1"G	galvanized steel
988/06	0,6 m	1" - black rubber - 10 bar	25 x 35	F 1"G	M 1"G	galvanized steel
995/2	1,5 m	2 x 3/8" - SBR-EPDM - EN 559 - 20 bar	9 + 9x16	F 3/8"G	F 3/8"G	brass

L-H: left hand thread

Black synthetic rubber hoses

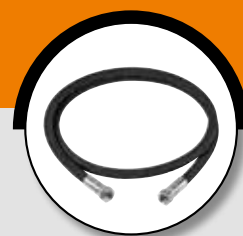


Air-Water 20 bar

P/N	Length	Characteristics - Pressure	Ø Inside - Outside	Connection		
				Inlet	Outlet	Material
932/1	1 m	1/4" - black rubber - 20 bar	6,3 x 17,5	F 1/4"G	M 1/4"G	galvanized steel
932/2	2 m	1/4" - black rubber - 20 bar	6,3 x 17,5	F 1/4"G	M 1/4"G	galvanized steel
932/15	15 m	1/4" - black rubber - 20 bar	6,3 x 17,5	M 1/4"G	M 1/4"G	galvanized steel
952/06	0,6 m	3/8" - black rubber - 20 bar	9,5 x 16	F 3/8"G	M 3/8"G	galvanized steel
952/10	10 m	3/8" - black rubber - 20 bar	9,5 x 16	M 3/8"G	M 3/8"G	galvanized steel
952/12	12 m	3/8" - black rubber - 20 bar	9,5 x 16	M 3/8"G	M 3/8"G	galvanized steel
952/13	12 m	3/8" - black rubber - 20 bar	9,5 x 16	F 3/8"G	M 3/8"G	galvanized steel
952/18	18 m	3/8" - black rubber - 20 bar	9,5 x 16	M 3/8"G	M 3/8"G	galvanized steel
952/19	18 m	3/8" - black rubber - 20 bar	9,5 x 16	F 3/8"G	M 3/8"G	galvanized steel
962/10	10 m	1/2" - black rubber - 20 bar	12,7 x 20	F 1/2"G	M 1/2"G	galvanized steel
962/15	15 m	1/2" - black rubber - 20 bar	12,7 x 20	F 1/2"G	M 1/2"G	galvanized steel
962/20	20 m	1/2" - black rubber - 20 bar	12,7 x 20	F 1/2"G	M 1/2"G	galvanized steel
962/25	25 m	1/2" - black rubber - 20 bar	12,7 x 20	F 1/2"G	M 1/2"G	galvanized steel
962/30	30 m	1/2" - black rubber - 20 bar	12,7 x 20	F 1/2"G	M 1/2"G	galvanized steel
962/40	40 m	1/2" - black rubber - 20 bar	12,7 x 20	F 1/2"G	M 1/2"G	galvanized steel
962/50	50 m	1/2" - black rubber - 20 bar	12,7 x 20	F 1/2"G	M 1/2"G	galvanized steel
962/60	60 m	1/2" - black rubber - 20 bar	12,7 x 20	F 1/2"G	M 1/2"G	galvanized steel
972/15	15 m	3/4" - black rubber - 20 bar	19 x 26,5	F 3/4"G	M 3/4"G	galvanized steel
972/20	20 m	3/4" - black rubber - 20 bar	19 x 26,5	F 3/4"G	M 3/4"G	galvanized steel
972/30	30 m	3/4" - black rubber - 20 bar	19 x 26,5	F 3/4"G	M 3/4"G	galvanized steel
972/35	35 m	3/4" - black rubber - 20 bar	19 x 26,5	F 3/4"G	M 3/4"G	galvanized steel
972/40	40 m	3/4" - black rubber - 20 bar	19 x 26,5	F 3/4"G	M 3/4"G	galvanized steel
982/15	15 m	1" - black rubber - 20 bar	25,4 x 32,5	F 1"G	M 1"G	galvanized steel
982/20	20 m	1" - black rubber - 20 bar	25,4 x 32,5	F 1"G	M 1"G	galvanized steel
982/30	30 m	1" - black rubber - 20 bar	25,4 x 32,5	F 1"G	M 1"G	galvanized steel



ECODORA



Water max 130°C 100 bar

P/N	Length	Characteristics - Pressure	∅ Inside - Outside	Connection		
				Inlet	Outlet	Material
953/13	12 m	3/8" - black rubber - 100 bar	9,5 x 15	M 3/8"G	M 3/8"G	galvanized steel
953/18	17 m	3/8" - black rubber - 100 bar	9,5 x 15	M 3/8"G	M 3/8"G	galvanized steel
963/05	0,6 m	1/2" - black rubber - 100 bar	12,7 x 20	F 1/2"G	M 1/2"G	galvanized steel
963/06	0,6 m	1/2" - black rubber - 100 bar	12,7 x 18,5	F 1/2"G	M 1/2"G	galvanized steel
963/1	1 m	1/2" - black rubber - 100 bar	12,7 x 18,5	F 1/2"G	M 1/2"G	galvanized steel
963/2	2 m	1/2" - black rubber - 100 bar	12,7 x 18,5	F 1/2"G	M 1/2"G	galvanized steel
963/4	4 m	1/2" - black rubber - 100 bar	12,7 x 18,5	F 1/2"G	M 1/2"G	galvanized steel
963/9	10 m	1/2" - black rubber - 100 bar	12,7 x 18,5	M 1/2"G	M 1/2"G	galvanized steel
963/12	10 m	1/2" - black rubber - 100 bar	12,7 x 18,5	F 1/2"G	M 1/2"G	galvanized steel
963/14	15 m	1/2" - black rubber - 100 bar	12,7 x 18,5	F 1/2"G	M 1/2"G	galvanized steel
963/19	20 m	1/2" - black rubber - 100 bar	12,7 x 18,5	F 1/2"G	M 1/2"G	galvanized steel
963/24	25 m	1/2" - black rubber - 100 bar	12,7 x 18,5	F 1/2"G	M 1/2"G	galvanized steel
963/29	30 m	1/2" - black rubber - 100 bar	12,7 x 18,5	F 1/2"G	M 1/2"G	galvanized steel
963/39	40 m	1/2" - black rubber - 100 bar	12,7 x 18,5	F 1/2"G	M 1/2"G	galvanized steel
963/49	50 m	1/2" - black rubber - 100 bar	12,7 x 18,5	F 1/2"G	M 1/2"G	galvanized steel
963/59	60 m	1/2" - black rubber - 100 bar	12,7 x 18,5	F 1/2"G	M 1/2"G	galvanized steel
973/14	15 m	3/4" - black rubber - 100 bar	19 x 25,5	F 3/4"G	M 3/4"G	galvanized steel
973/19	20 m	3/4" - black rubber - 100 bar	19 x 25,5	F 3/4"G	M 3/4"G	galvanized steel
973/29	30 m	3/4" - black rubber - 100 bar	19 x 25,5	F 3/4"G	M 3/4"G	galvanized steel
973/34	35 m	3/4" - black rubber - 100 bar	19 x 25,5	F 3/4"G	M 3/4"G	galvanized steel
973/39	40 m	3/4" - black rubber - 100 bar	19 x 25,5	F 3/4"G	M 3/4"G	galvanized steel
983/05	0,6 m	1" - black rubber - 100 bar	25,4 x 33,5	F 1"G	M 1"G	galvanized steel
983/15	15 m	1" - black rubber - 50 bar	25,4 x 31,5	F 1"G	M 1"G	galvanized steel
983/19	20 m	1" - black rubber - 50 bar	25,4 x 31,5	F 1"G	M 1"G	galvanized steel
983/29	30 m	1" - black rubber - 50 bar	25,4 x 31,5	F 1"G	M 1"G	galvanized steel

Water max 130°C 200 bar

P/N	Length	Characteristics - Pressure	∅ Inside - Outside	Connection		
				Inlet	Outlet	Material
943/12	12 m	5/16" - black rubber - 200 bar	8 x 15	M 3/8"G	F 3/8"G	galvanized steel
943/17	17 m	5/16" - black rubber - 200 bar	8 x 15	M 3/8"G	F 3/8"G	galvanized steel
955/06	0,6 m	3/8" - black rubber - 200 bar	9,5 x 17	F 3/8"G	F 3/8"G	galvanized steel
955/12	12 m	3/8" - black rubber - 200 bar	9,5 x 17	F 3/8"G	F 3/8"G	galvanized steel
955/18	18 m	3/8" - black rubber - 200 bar	9,5 x 17	F 3/8"G	F 3/8"G	galvanized steel
955/20	20 m	3/8" - black rubber - 200 bar	9,5 x 17	F 3/8"G	F 3/8"G	galvanized steel
955/25	25 m	3/8" - black rubber - 200 bar	9,5 x 17	F 3/8"G	F 3/8"G	galvanized steel
955/30	30 m	3/8" - black rubber - 200 bar	9,5 x 17	F 3/8"G	F 3/8"G	galvanized steel
955/40	40 m	3/8" - black rubber - 200 bar	9,5 x 17	F 3/8"G	F 3/8"G	galvanized steel
955/50	50 m	3/8" - black rubber - 200 bar	9,5 x 17	F 3/8"G	F 3/8"G	galvanized steel

Water max 130°C 400 bar

P/N	Length	Characteristics - Pressure	∅ Inside - Outside	Connection		
				Inlet	Outlet	Material
945/12	12 m	5/16" - black rubber - 400 bar	8 x 16	M 3/8"G	F 3/8"G	galvanized steel
945/17	17 m	5/16" - black rubber - 400 bar	8 x 16	M 3/8"G	F 3/8"G	galvanized steel
907/06	0,6 m	3/8" - black rubber - 400 bar	9,5 x 17,5	F 3/8"G	M 3/8"G	galvanized steel
907/10	10 m	3/8" - black rubber - 400 bar	9,5 x 17,5	F 3/8"G	F 3/8"G	galvanized steel
907/15	15 m	3/8" - black rubber - 400 bar	9,5 x 17,5	F 3/8"G	F 3/8"G	galvanized steel
907/20	20 m	3/8" - black rubber - 400 bar	9,5 x 17,5	F 3/8"G	F 3/8"G	galvanized steel
907/25	25 m	3/8" - black rubber - 400 bar	9,5 x 17,5	F 3/8"G	F 3/8"G	galvanized steel
907/30	30 m	3/8" - black rubber - 400 bar	9,5 x 17,5	F 3/8"G	F 3/8"G	galvanized steel
907/40	40 m	3/8" - black rubber - 400 bar	9,5 x 17,5	F 3/8"G	F 3/8"G	galvanized steel
907/50	50 m	3/8" - black rubber - 400 bar	9,5 x 17,5	F 3/8"G	F 3/8"G	galvanized steel

Hygienic synthetic rubber hoses



Hygienic hose for Air-Water 10 bar

P/N	Length	Characteristics - Pressure	∅ Inside - Outside	Connection		
				Inlet	Outlet	Material
950/06	0,6 m	3/8" - hygienic - 20 bar	10 x 17	F 3/8"G	M 3/8"G	galvanized steel
950/12	12 m	3/8" - hygienic - 20 bar	10 x 17	M 3/8"G	M 3/8"G	galvanized steel
960/06	0,6 m	1/2" - hygienic - 20 bar	13 x 20	F 1/2"G	M 1/2"G	galvanized steel
960/10	10 m	1/2" - hygienic - 20 bar	13 x 20	F 1/2"G	M 1/2"G	galvanized steel
960/15	15 m	1/2" - hygienic - 20 bar	13 x 20	F 1/2"G	M 1/2"G	galvanized steel
960/20	20 m	1/2" - hygienic - 20 bar	13 x 20	F 1/2"G	M 1/2"G	galvanized steel
960/25	25 m	1/2" - hygienic - 20 bar	13 x 20	F 1/2"G	M 1/2"G	galvanized steel
960/30	30 m	1/2" - hygienic - 20 bar	13 x 20	F 1/2"G	M 1/2"G	galvanized steel
970/15	15 m	3/4" - hygienic - 20 bar	19 x 27	F 3/4"G	M 3/4"G	galvanized steel
970/20	20 m	3/4" - hygienic - 20 bar	19 x 27	F 3/4"G	M 3/4"G	galvanized steel
970/30	30 m	3/4" - hygienic - 20 bar	19 x 27	F 3/4"G	M 3/4"G	galvanized steel
970/40	40 m	3/4" - hygienic - 20 bar	19 x 27	F 3/4"G	M 3/4"G	galvanized steel
980/06	0,6 m	1" - hygienic - 20 bar	25 x 35	F 1"G	M 1"G	galvanized steel
980/15	15 m	1" - hygienic - 20 bar	25 x 35	F 1"G	M 1"G	galvanized steel
980/20	20 m	1" - hygienic - 20 bar	25 x 35	F 1"G	M 1"G	galvanized steel
980/30	30 m	1" - hygienic - 20 bar	25 x 35	F 1"G	M 1"G	galvanized steel

Hygienic hose for Water max 130°C 100 bar

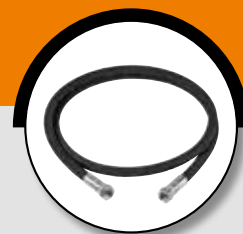
P/N	Length	Characteristics - Pressure	∅ Inside - Outside	Connection		
				Inlet	Outlet	Material
954/13	12 m	3/8" - hygienic - 100 bar	9,5 x 17	M 3/8"G	M 3/8"G	galvanized steel
964/8	8 m	1/2" - hygienic - 100 bar	12,7 x 20	M 1/2"G	M 1/2"G	galvanized steel
964/06	0,6 m	1/2" - hygienic - 100 bar	12,7 x 20	F 1/2"G	M 1/2"G	galvanized steel
964/15	15 m	1/2" - hygienic - 100 bar	12,7 x 20	F 1/2"G	M 1/2"G	galvanized steel
964/25	25 m	1/2" - hygienic - 100 bar	12,7 x 20	F 1/2"G	M 1/2"G	galvanized steel
974/20	20 m	3/4" - hygienic - 100 bar	19 x 26	F 3/4"G	M 3/4"G	galvanized steel
974/30	30 m	3/4" - hygienic - 100 bar	19 x 26	F 3/4"G	M 3/4"G	galvanized steel
974/40	40m	3/4" - hygienic - 100 bar	19 x 26	F 3/4"G	M 3/4"G	galvanized steel
984/06	0,6 m	1" - hygienic - 50 bar	25,4 x 33,5	F 1"G	M 1"G	galvanized steel
984/20	20 m	1" - hygienic - 50 bar	25,4 x 33,5	F 1"G	M 1"G	galvanized steel
984/30	30 m	1" - hygienic - 50 bar	25,4 x 33,5	F 1"G	M 1"G	galvanized steel

Hygienic hose for Water max 130°C 200 bar

P/N	Length	Characteristics - Pressure	∅ Inside - Outside	Connection		
				Inlet	Outlet	Material
944/12	12 m	5/16" - hygienic - 200 bar	8 x 15	M 3/8"G	F 3/8"G	galvanized steel
956/06	0,6 m	3/8" - hygienic - 200 bar	9,5 x 17	F 3/8"G	M 3/8"G	galvanized steel
956/12	12 m	3/8" - hygienic - 200 bar	9,5 x 17	F 3/8"G	F 3/8"G	galvanized steel
956/18	18 m	3/8" - hygienic - 200 bar	9,5 x 17	F 3/8"G	F 3/8"G	galvanized steel
956/25	25 m	3/8" - hygienic - 200 bar	9,5 x 17	F 3/8"G	F 3/8"G	galvanized steel
956/30	30 m	3/8" - hygienic - 200 bar	9,5 x 17	F 3/8"G	F 3/8"G	galvanized steel
956/40	40 m	3/8" - hygienic - 200 bar	9,5 x 17	F 3/8"G	F 3/8"G	galvanized steel

Hygienic hose for Water max 130°C 400 bar

P/N	Length	Characteristics - Pressure	∅ Inside - Outside	Connection		
				Inlet	Outlet	Material
946/12	12 m	5/16" - hygienic - 400 bar	8 x 16	M 3/8"G	F 3/8"G	galvanized steel
906/06	0,6 m	3/8" - hygienic - 400 bar	9,5 x 17,5	F 3/8"G	M 3/8"G	galvanized steel
906/10	10 m	3/8" - hygienic - 400 bar	9,5 x 17,5	F 3/8"G	F 3/8"G	galvanized steel
906/15	15 m	3/8" - hygienic - 400 bar	9,5 x 17,5	F 3/8"G	F 3/8"G	galvanized steel
906/25	25 m	3/8" - hygienic - 400 bar	9,5 x 17,5	F 3/8"G	F 3/8"G	galvanized steel
906/40	40 m	3/8" - hygienic - 400 bar	9,5 x 17,5	F 3/8"G	F 3/8"G	galvanized steel



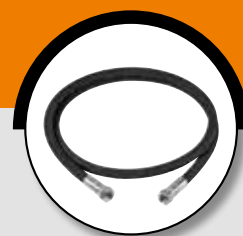
Oil and similar 50 - 100 - 150 bar

P/N	Length	Characteristics - Pressure	∅ Inside - Outside	Connection		
				Inlet	Outlet	Material
953/1	1 m	3/8" - black rubber - 150 bar	9,5 x 17	M 3/8"G	M 1/2"G	galvanized steel
953/12	12 m	3/8" - black rubber - 150 bar	9,5 x 17	M 3/8"G	M 1/2"G	galvanized steel
953/17	17 m	3/8" - black rubber - 150 bar	9,5 x 17	M 3/8"G	M 1/2"G	galvanized steel
963/06	0,6 m	1/2" - black rubber - 100 bar	12,7 x 18,5	F 1/2"G	M 1/2"G	galvanized steel
963/1	1 m	1/2" - black rubber - 100 bar	12,7 x 18,5	F 1/2"G	M 1/2"G	galvanized steel
963/2	2 m	1/2" - black rubber - 100 bar	12,7 x 18,5	F 1/2"G	M 1/2"G	galvanized steel
963/4	4 m	1/2" - black rubber - 100 bar	12,7 x 18,5	F 1/2"G	M 1/2"G	galvanized steel
963/7	6 m	1/2" - black rubber - 150 bar	12,7 x 19	F 1/2"G	M 1/2"G	galvanized steel
963/8	8 m	1/2" - black rubber - 150 bar	12,7 x 19	M 1/2"G	M 1/2"G	galvanized steel
963/10	10 m	1/2" - black rubber - 150 bar	12,7 x 19	M 1/2"G	M 1/2"G	galvanized steel
963/11	10 m	1/2" - black rubber - 150 bar	12,7 x 19	F 1/2"G	M 1/2"G	galvanized steel
963/15	15 m	1/2" - black rubber - 150 bar	12,7 x 19	F 1/2"G	M 1/2"G	galvanized steel
963/20	20 m	1/2" - black rubber - 150 bar	12,7 x 19	F 1/2"G	M 1/2"G	galvanized steel
963/25	25 m	1/2" - black rubber - 150 bar	12,7 x 19	F 1/2"G	M 1/2"G	galvanized steel
963/30	30 m	1/2" - black rubber - 150 bar	12,7 x 19	F 1/2"G	M 1/2"G	galvanized steel
963/40	40 m	1/2" - black rubber - 150 bar	12,7 x 19	F 1/2"G	M 1/2"G	galvanized steel
963/50	50 m	1/2" - black rubber - 150 bar	12,7 x 19	F 1/2"G	M 1/2"G	galvanized steel
963/60	60 m	1/2" - black rubber - 150 bar	12,7 x 19	F 1/2"G	M 1/2"G	galvanized steel
973/14	15 m	3/4" - black rubber - 100 bar	19 x 26,5	F 3/4"G	M 3/4"G	galvanized steel
973/19	20 m	3/4" - black rubber - 100 bar	19 x 26,5	F 3/4"G	M 3/4"G	galvanized steel
973/29	30 m	3/4" - black rubber - 100 bar	19 x 26,5	F 3/4"G	M 3/4"G	galvanized steel
973/305	5 m	3/4" - black rubber - 100 bar	19 x 26,5	F 3/4"G	M 3/4"G	galvanized steel
973/306	0,6 m	3/4" - black rubber - 100 bar	19 x 26,5	F 3/4"G	M 1/2"G	galvanized steel
973/308	8 m	3/4" - black rubber - 100 bar	19 x 26,5	F 1/2"G	M 3/4"G	galvanized steel
973/312	12 m	3/4" - black rubber - 100 bar	19 x 26,5	F 3/4"G	M 3/4"G	galvanized steel
973/315	15 m	3/4" - black rubber - 100 bar	19 x 26,5	F 3/4"G	M 3/4"G	galvanized steel
973/320	20 m	3/4" - black rubber - 100 bar	19 x 26,5	F 3/4"G	M 3/4"G	galvanized steel
973/330	30 m	3/4" - black rubber - 100 bar	19 x 26,5	F 3/4"G	M 3/4"G	galvanized steel
973/340	40 m	3/4" - black rubber - 100 bar	19 x 26,5	F 3/4"G	M 3/4"G	galvanized steel
983/301	1 m	1" - black rubber - 50 bar	25,4 x 35,5	F 1"G	M 1"G	galvanized steel
983/302	2 m	1" - black rubber - 50 bar	25,4 x 35,5	F 1"G	M 1"G	galvanized steel
983/306	0,6 m	1" - black rubber - 50 bar	25,4 x 35,5	F 1"G	M 1"G	galvanized steel
983/310	10 m	1" - black rubber - 50 bar	25,4 x 35,5	F 1"G	M 1"G	galvanized steel
983/315	15 m	1" - black rubber - 50 bar	25,4 x 35,5	F 1"G	M 1"G	galvanized steel
983/320	20 m	1" - black rubber - 50 bar	25,4 x 35,5	F 1"G	M 1"G	galvanized steel
983/330	30 m	1" - black rubber - 50 bar	25,4 x 35,5	F 1"G	M 1"G	galvanized steel
993/310	10 m	5/8" - black rubber - 100 bar	16 x 23	F 1/2"G	M 3/4"G	galvanized steel



ECODORA

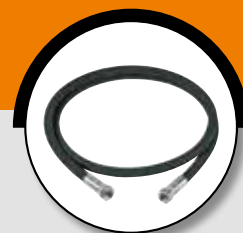
Black synthetic rubber hoses



Grease 400 bar

P/N	Length	Characteristics - Pressure	∅ Inside - Outside	Connection		
				Inlet	Outlet	Material
935/4	4 m	1/4" - black rubber - 400 bar	6,3 x 17,5	F 1/4"G	M 1/4"G	galvanized steel
935/12	12 m	1/4" - black rubber - 400 bar	6,3 x 17,5	M 3/8"G	M 1/4"G	galvanized steel
935/13	12 m	1/4" - black rubber - 400 bar	6,3 x 17,5	F 1/4"G	M 1/4"G	galvanized steel
935/16	16 m	1/4" - black rubber - 400 bar	6,3 x 17,5	M 3/8"G	M 1/4"G	galvanized steel
935/18	18 m	1/4" - black rubber - 400 bar	6,3 x 17,5	F 1/4"G	M 1/4"G	galvanized steel
957/06	0,6 m	3/8" - black rubber - 400 bar	9,5 x 18	F 3/8"G	M 3/8"G	galvanized steel
957/1	1 m	3/8" - black rubber - 400 bar	9,5 x 18	F 3/8"G	M 3/8"G	galvanized steel
957/2	2 m	3/8" - black rubber - 400 bar	9,5 x 18	F 3/8"G	M 3/8"G	galvanized steel
957/10	10 m	3/8" - black rubber - 400 bar	9,5 x 18	F 3/8"G	M 1/4"G	galvanized steel
957/15	15 m	3/8" - black rubber - 400 bar	9,5 x 18	F 3/8"G	M 1/4"G	galvanized steel
957/20	20 m	3/8" - black rubber - 400 bar	9,5 x 18	F 3/8"G	M 1/4"G	galvanized steel
957/25	25 m	3/8" - black rubber - 400 bar	9,5 x 18	F 3/8"G	M 1/4"G	galvanized steel
957/30	30 m	3/8" - black rubber - 400 bar	9,5 x 18	F 3/8"G	M 1/4"G	galvanized steel

Special antistatic hoses



Diesel fuel, Kerosene and Fuel oil 10 bar

P/N	Length	Characteristics - Pressure	∅ Inside - Outside	Connection		
				Inlet	Outlet	Material
978/06	0,6 m	3/4" - rubber NBR-EPDM antistatic - 10 bar	19 x 27	M 1/2"G	F 3/4"G	galvanized steel
978/8	8 m	3/4" - rubber NBR-EPDM antistatic - 10 bar	19 x 27	M 3/4"G	F 1/2"G	galvanized steel
978/12	12 m	3/4" - rubber NBR-EPDM antistatic - 10 bar	19 x 27	F 3/4"G	M 3/4"G	galvanized steel
978/15	15 m	3/4" - rubber NBR-EPDM antistatic - 10 bar	19 x 27	F 3/4"G	M 3/4"G	galvanized steel
978/20	20 m	3/4" - rubber NBR-EPDM antistatic - 10 bar	19 x 27	F 3/4"G	M 3/4"G	galvanized steel
978/40	40 m	3/4" - rubber NBR-EPDM antistatic - 10 bar	19 x 27	F 3/4"G	M 3/4"G	galvanized steel
988/06	0,6 m	1" - rubber NBR-EPDM antistatic - 10 bar	25 x 35	F 1"G	M 1"G	galvanized steel
988/8	8 m	1" - rubber NBR-EPDM antistatic - 10 bar	25 x 35	F 1"G	M 1"G	galvanized steel
988/15	15 m	1" - rubber NBR-EPDM antistatic - 10 bar	25 x 35	F 1"G	M 1"G	galvanized steel
988/20	20 m	1" - rubber NBR-EPDM antistatic - 10 bar	25 x 35	F 1"G	M 1"G	galvanized steel
988/30	30 m	1" - rubber NBR-EPDM antistatic - 10 bar	25 x 35	F 1"G	M 1"G	galvanized steel
998/10	10 m	5/8" - rubber NBR-EPDM antistatic - 10 bar	16 x 23	F 1/2"G	M 3/4"G	galvanized steel

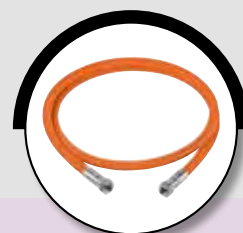
AdBlue 10 bar

P/N	Length	Characteristics - Pressure	∅ Inside - Outside	Connection		
				Inlet	Outlet	Material
882/05	0,6 m	3/4" - rubber EPDM antistatic - 10 bar	19 x 27	M 1/2"G	F 3/4"G	s. steel AISI 304
882/06	0,6 m	3/4" - rubber EPDM antistatic - 10 bar	19 x 27	F 3/4"G	M 1"G	s. steel AISI 304
882/8	8 m	3/4" - rubber EPDM antistatic - 10 bar	19 x 27	F 1/2"G	M 3/4"G	s. steel AISI 304
882/10	10 m	3/4" - rubber EPDM antistatic - 10 bar	19 x 27	F 3/4"G	M 3/4"G	s. steel AISI 304
882/15	15 m	3/4" - rubber EPDM antistatic - 10 bar	19 x 27	F 3/4"G	M 3/4"G	s. steel AISI 304



Oxygen and Acetylene double hose 20 bar

P/N	Length	Characteristics - Pressure	∅ Inside - Outside	Connection		
				Inlet	Outlet	Material
993/13	13 m	2 x 1/4" - SBR-EPDM - EN 559 - 20 bar	6,3 + 6,3x13	F 3/8"G	F 3/8"G	brass
993/17	17 m	2 x 1/4" - SBR-EPDM - EN 559 - 20 bar	6,3 + 6,3x13	F 3/8"G	F 3/8"G	brass
993/20	20 m	2 x 1/4" - SBR-EPDM - EN 559 - 20 bar	6,3 + 6,3x13	F 3/8"G	F 3/8"G	brass
993/25	25 m	2 x 1/4" - SBR-EPDM - EN 559 - 20 bar	6,3 + 6,3x13	F 3/8"G	F 3/8"G	brass
993/30	30 m	2 x 1/4" - SBR-EPDM - EN 559 - 20 bar	6,3 + 6,3x13	F 3/8"G	F 3/8"G	brass
993/35	35 m	2 x 1/4" - SBR-EPDM - EN 559 - 20 bar	6,3 + 6,3x13	F 3/8"G	F 3/8"G	brass
994/12	12 m	2 x 5/16" - SBR-EPDM - EN 559 - 20 bar	8 + 8x15	F 3/8"G	F 3/8"G	brass
994/15	15 m	2 x 5/16" - SBR-EPDM - EN 559 - 20 bar	8 + 8x15	F 3/8"G	F 3/8"G	brass
994/20	20 m	2 x 5/16" - SBR-EPDM - EN 559 - 20 bar	8 + 8x15	F 3/8"G	F 3/8"G	brass
994/25	25 m	2 x 5/16" - SBR-EPDM - EN 559 - 20 bar	8 + 8x15	F 3/8"G	F 3/8"G	brass
994/30	30 m	2 x 5/16" - SBR-EPDM - EN 559 - 20 bar	8 + 8x15	F 3/8"G	F 3/8"G	brass
994/35	35 m	2 x 5/16" - SBR-EPDM - EN 559 - 20 bar	8 + 8x15	F 3/8"G	F 3/8"G	brass
995/2	1,5 m	2 x 3/8" - SBR-EPDM - EN 559 - 20 bar	9 + 9x16	F 3/8"G	F 3/8"G	brass
995/15	15 m	2 x 3/8" - SBR-EPDM - EN 559 - 20 bar	9 + 9x16	F 3/8"G	F 3/8"G	brass
995/20	20 m	2 x 3/8" - SBR-EPDM - EN 559 - 20 bar	9 + 9x16	F 3/8"G	F 3/8"G	brass
995/25	25 m	2 x 3/8" - SBR-EPDM - EN 559 - 20 bar	9 + 9x16	F 3/8"G	F 3/8"G	brass
995/27	27 m	2 x 3/8" - SBR-EPDM - EN 559 - 20 bar	9 + 9x16	F 3/8"G	F 3/8"G	brass



LPG, Methane and Natural gas 20 bar

P/N	Length	Characteristics - Pressure	∅ Inside - Outside	Connection		
				Inlet	Outlet	Material
949/8	8 m	5/16" - NBR-PVC - EN 559 - 20 bar	8 x 15	F 3/8"G - LH	F 3/8"G - LH	brass
949/15	15 m	5/16" - NBR-PVC - EN 559 - 20 bar	8 x 15	F 3/8"G - LH	F 3/8"G - LH	brass
949/20	20 m	5/16" - NBR-PVC - EN 559 - 20 bar	8 x 15	F 3/8"G - LH	F 3/8"G - LH	brass
949/28	28 m	5/16" - NBR-PVC - EN 559 - 20 bar	8 x 15	F 3/8"G - LH	F 3/8"G - LH	brass
959/2	1,5 m	3/8" - NBR-PVC - EN 559 - 20 bar	10 x 17	F 3/8"G - LH	F 3/8"G - LH	brass
959/10	10 m	3/8" - NBR-PVC - EN 559 - 20 bar	10 x 17	F 3/8"G - LH	F 3/8"G - LH	brass
959/15	15 m	3/8" - NBR-PVC - EN 559 - 20 bar	10 x 17	F 3/8"G - LH	F 3/8"G - LH	brass
959/18	18 m	3/8" - NBR-PVC - EN 559 - 20 bar	10 x 17	F 3/8"G - LH	F 3/8"G - LH	brass
959/27	27 m	3/8" - NBR-PVC - EN 559 - 20 bar	10 x 17	F 3/8"G - LH	F 3/8"G - LH	brass
959/30	30 m	3/8" - NBR-PVC - EN 559 - 20 bar	10 x 17	F 3/8"G - LH	F 3/8"G - LH	brass

L-H: left hand thread

Chemical compatibility

The information given in the following tables was obtained from various sources which, for competence and technical knowledge, we deem reliable. These data is not the result of tests carried out by us, but should be regarded only as a guide to be used for determining the suitability of the various pump parts in contact with the fluid.

ECODORA declines all liability for any inaccuracies contained in the following tables due to printing, transcription or appraisal errors and, in case of no previous experience confirming suitability, recommends the practical testing of the materials that will come into contact with the fluids to be pumped.



Fluids	Materials							
	Galvanised steel	S. steel AISI 304	S. steel AISI 316	Brass	Polyurethane	Viton	Teflon	NBR
Acetate solvent	-	A	A	-	D	D	A	D
Acetic acid	A	A	A	D	C	C	A	C
Acetic acid, glacial	A	A	A	D	C	D	A	D
Acetone	A	A	A	D	D	D	A	D
Acetyl chloride (dry)	-	B	B	B	D	B	A	D
Acetylene	A	A	A	-	D	A	A	B
Adipic acid	-	B	B	-	-	A	A	B
Alcohols: ethyl	A	A	A	B	D	D	A	C
Alcohols: methyl	A	A	A	-	D	D	A	A
Ammonia (10%)	-	-	A	D	D	D	A	A
Ammonia, anhydrous	-	-	A2	D	D	D	A	B
Ammonia, liquid	-	-	A2	D	B	D	A	C
Ammonium bifluoride	-	-	A	-	-	A	A	A
Ammonium carbonate	B	B	A	-	-	B	A	B
Ammonium chloride	D	C	C	D	A	A	A	B
Ammonium nitrate	D	A	A	-	D	A	A	A
Ammonium oxalate	A	A	A	-	-	-	-	A
Ammonium persulfate	A	A	A	-	D	A	A	D
Ammonium phosphate dibasic	-	-	A	D	-	A	A	A
Ammonium phosphate monobasic	A	-	A	D	-	A	A	A
Ammonium phosphate tribasic	A	-	A	D	-	A	A	A
Ammonium sulfate	C	A	A	D	A	-	A	A
Ammonium thiosulfate	-	A	A	D	-	-	A	A
Antifreeze	A	A	A	A	A	A	A	A
Aqua regia (80% hci, 20% hno3)	-	-	D	-	-	B	A	A
Aromatic hydrocarbons	-	A	C	-	D	A	A	D
Arsenic acid	D	A	A	D	C	A	A	A
Beer	-	-	A	-	D	A	A	A
Benzene	D	A	B	A	D	A	A	D
Benzoic acid	-	B	A	B	D	A	A	D
Bitumen	D	-	A	-	D	A	A	D
Bleach	D	A	A	D	D	A	A	D
Bleaching liquors	-	-	-	-	-	A	A	D
Boric acid	-	A	A	D	A	A	A	A
Brake fluid	A	A	A	A	D	D	A	D
Butane	-	A	A2	-	A	A	A	A
Butanol	-	A	A1	-	-	A	A2	A

A ▶ excellent compatibility
B ▶ good compatibility

C ▶ poor compatibility, not recommended
D ▶ no compatibility, not recommended

1 ▶ satisfactory up to 22°C
2 ▶ satisfactory up to 48°C

- ▶ not available

Chemical compatibility table

Fluids	Materials							
	Galvanised steel	S. steel AISI 304	S. steel AISI 316	Brass	Polyurethane	Viton	Teflon	NBR
Butter	-	-	A	-	A	A	A	A
Buttermilk	-	A	A	-	-	A	A	A
Butyric acid	-	B	A	-	-	-	A	D
Calcium bisulfide	-	B	B	-	A	A	A	A
Calcium carbonate	-	A	A	D	-	A	A	A
Calcium chloride	-	C	C	D	A	A	A	A
Calcium hydroxide	-	A	A	C	A	A	A	A
Calcium hypochlorite	-	A	A	C	D	A	A	C
Calcium nitrate	-	B	B	-	A	A	A	B
Calcium sulfate	-	A	A	-	-	A	A	A
Cane juice	-	A	A	-	D	A	A	A
Carbolic acid (phenol)	-	A	A	C	C	A	A	D
Carbonated acid	-	-	A	-	-	A	-	A
Carbonic acid	-	B	B	C	A	A	A	B
Chlorine (anhydrous liquid)	-	D	D	-	-	A	A	D
Chlorine (dry)	-	D	-	-	D	A	A	D
Chlorine water	-	-	C	-	-	A	A	D
Chloroacetic acid	-	-	-	-	-	D	D	D
Chlorobenzene	C	B	A	B	D	A	A	D
Chlorobromomethane	-	B	B	-	D	A	A	D
Chlorosulfonic acid	D	D	D	D	D	D	A	D
Chocolate syrup	-	-	A	-	-	A	A	A
Chromic acid 5%	-	A	A	A	D	A	A	D
Chromic acid 50%	-	B	B	D	D	A	A	D
Cider	-	B	A	-	-	A	A	A
Citric acid	D	A	A2	D	A	A	A	A
Coffee	-	A	A	-	D	A	A	A
Copper chloride	-	D	D	D	A	A	A	A
Copper nitrate	-	A	A	-	-	A	A	A
Cream	-	-	A	-	-	A	A	A
Cresylic acid	-	A	A	-	D	A	A	D
Cutting oil	-	-	A	-	-	A	A	A
Cyanic acid	-	A	A	-	-	-	-	C
Diesel fuel	A	A	A1	A	B	A	A	A
Distilled water	-	-	A	-	-	A	A	A
Dyes	-	-	A	-	-	A	-	-
Engine oil	A	A	A2	A	A	A	A	A

A ▶ excellent compatibility
B ▶ good compatibility

C ▶ poor compatibility, not recommended
D ▶ no compatibility, not recommended

1 ▶ satisfactory up to 22°C
2 ▶ satisfactory up to 48°C

- ▶ not available

Fluids	Materials							
	Galvanised steel	S. steel AISI 304	S. steel AISI 316	Brass	Polyurethane	Viton	Teflon	NBR
Ethyl acetate	C	A	A	A	D	D	A	D
Ethyl chloride	D	A	A	-	C	A	A	A
Ethyl sulfate	-	D	D	-	-	-	A	-
Fatty acids	-	-	A	-	-	A	A	B
Ferric chloride	-	D	D	D	D	A	A	A
Ferrous chloride	-	D	D	D	-	A	A	B
Fluoboric acid	-	B	B	D	-	A	A	B
Fluosilicic acid	-	B	B	D	B	-	A	A
Formic acid	D	A	A	D	D	B	A	D
Freon 113	-	A	A	-	B	C	A	A
Freon 12	-	A	A	A	A	B	A	A
Freon 22	-	A	A	-	D	D	A	-
Freon tf	-	A	A	-	A	-	A	A
Fresh water	D	A	A	B	A	A	A	A
Fruit juice	-	-	A	-	-	A	A	A
Fuel oils	-	-	A	B	-	A	B	A
Gallic acid	D	B	B	-	D	A	A	C
Gasoline (high-aromatic)	A	A	A	A	D	A	A	C
Gasoline, leaded	A	A	A2	A	D	A	A	A2
Gasoline, unleaded	A	A	A2	A	D	A	A	A1
Gelatin	-	-	A2	-	-	A	A	A
Glue (p.V.A.)	A	A	A2	-	A	B	A	C
Glycerin	-	A	A	A	A	A	A	A
Glycolic acid	-	-	-	-	-	A	A	A
Grape juice	-	A	A	-	-	A	A2	A
Grease	A	A	A	A	A	A	A	A
Honey	-	-	A	-	-	A	A	A
Hydraulic oil (petro)	A	A	A	A	A	A	A	A
Hydraulic oil (synthetic)	A	A	A	A	A	A	A	A
Hydrochloric acid (37% - cold)	-	D	D	D	C	A	A	C
Hydrobromic acid 100%	D	D	D	D	D	-	A	D
Hydrochloric acid (20%)	-	D	D	D	B	A	A	C
Hydrochloric acid (37% - hot)	-	D	D	D	C	A	A	D
Hydrofluoric acid 20%	-	D	D	D	-	A	A	D
Hydrofluoric acid 50%	-	D	D	D	D	A	A	D
Hydrofluoric acid 75%	-	D	D	D	-	-	A	D
Hydrofluoric acid concentrated	-	D	D	D	D	-	A	D

A ▶ excellent compatibility
B ▶ good compatibility

C ▶ poor compatibility, not recommended
D ▶ no compatibility, not recommended

1 ▶ satisfactory up to 22°C
2 ▶ satisfactory up to 48°C

- ▶ not available

Chemical compatibility table

Fluids	Materials							
	Galvanised steel	S. steel AISI 304	S. steel AISI 316	Brass	Polyurethane	Viton	Teflon	NBR
Hydrofluosilicic acid	-	D	D	D	B	A	A	B
Hydrogen (gas)	-	-	A	D	A	A	A	A
Hydrogen peroxide	D	A	A	D	C	A	A	B
Hydroxyacetic acid	-	B	-	-	-	-	A	-
Ink	-	A	C	-	-	A	A	A
Isooctane	-	A	-	A	B	A	A	A
Jet fuel (jet a1)	A	A	A	A	C	A	A	A
Kerosene	A	A	A	A	C	A	A	A
Lacquer solvent	-	-	A	-	D	B	A	D
Lacquers	-	A	A	A	-	D	A	D
Lactic acid	D	A	A	B	-	A	A	B
Latex	-	A	A2	-	-	A	A	A
Lime	-	-	A	-	-	A	A1	A
Linoleic acid	-	A	A	-	-	B	A	B
Magneium nitrate	-	A	A	-	-	A	A	A
Magnesium carbonate	-	A	A	-	-	-	A	A
Magnesium chloride	C	D	D	-	A	A	A	A
Magnesium hydroxide	B	A	A	B	A	A	A	A
Magnesium oxide	-	A	A	-	-	A	A	A
Magnesium sulfate	B	A	A	-	-	A	A	A
Maleic acid	B	A	A	D	-	A	A	D
Malic acid	-	A	A	D	-	A	A	B
Mash	-	A	A	-	-	A	-	A
Mayonnaise	-	A	A	-	-	A	A	C
Mercury	-	A	A	D	A	A	A	A
Mercury chloride (dilute)	-	-	D	D	-	A	A	A
Mercury cyanide	-	B	B	D	-	A1	A	A
Methane	A	A	A	B	B	A	A	A
Methanol	-	A	A	B	D	C	A	A
Methyl acetone	A	A	A	-	-	D	A	D
Methyl acrylate	-	A	-	B	-	D	A	D
Methyl bromide	-	A	-	-	-	A	A	B
Methyl chloride	-	A	A	-	D	B	A	D
Methyl dichloride	-	-	-	-	D	A	A	D
Methyl ethyl ketone	-	A	A	-	D	D	A	D
Methyl methacrylate	-	A	-	-	-	D	A	D
Milk	-	A	A	-	-	A	A	A1

A ▶ excellent compatibility
B ▶ good compatibility

C ▶ poor compatibility, not recommended
D ▶ no compatibility, not recommended

1 ▶ satisfactory up to 22°C
2 ▶ satisfactory up to 48°C

- ▶ not available

Fluids	Materials							
	Galvanised steel	S. steel AISI 304	S. steel AISI 316	Brass	Polyurethane	Viton	Teflon	NBR
Mineral spirits	-	-	A	A	-	A	A	A
Molasses	-	A	A	-	D	A	A	A
Naphta	-	-	A	B	C	A	A	B
Naphtalene	-	-	A	B	-	A	A	D
Nitric acid (20%)	D	A	A	D	C	A	A	D
Nitric acid (50%)	D	A	A	D	C	A	A	D
Nitric acid (5-10%)	D	A	A	D	C	A	A	D
Nitric acid (concentrated)	D	A	A	D	D	A	A	D
Oils: aniline	-	-	A	-	-	C	A	D
Oils: anise	-	-	A	-	-	-	-	-
Oils: bay	-	-	A	-	-	A	-	-
Oils: bone	-	-	A	A	-	A	A	A
Oils: castor	-	A	A	-	A	A	A	B
Oils: cinnamon	-	-	A	-	-	A	A	-
Oils: clove	-	-	A	-	-	A	A	A
Oils: coconut	-	-	A	-	-	A	A	A
Oils: cod liver	-	-	A	-	-	A	A	A
Oils: corn	-	-	A	-	-	B	A	D
Oils: cottonseed	-	-	A	-	-	A	A	A
Oils: creosote	-	-	B	-	-	A	A	D
Oils: diesel fuel (20,30,40,50)	-	-	A	B	-	A	A	A
Oils: fuel (1, 2, 3, 5a, 5b, 6)	-	-	A	B	-	B	A	B
Oils: ginger	-	-	D	-	-	A	A	A
Oils: limon	-	-	A	-	-	A	A	-
Oils: linseed	-	-	A	B	-	A	A	A
Oils: mineral	A	A	A	A	A	A	A	A
Oils: olive	-	-	A	-	-	A	A1	D
Oils: orange	-	-	A	-	-	A	-	A
Oils: palm	-	-	A	-	-	A	A	A
Oils: peanut	-	-	A	-	-	A	A	A
Oils: peppermint	-	-	A	-	-	A	A	D
Oils: pine	-	-	A	-	-	A	A	D
Oils: rapeseed	-	A	A	-	B	A	A	D
Oils: rosin	-	-	A1	-	-	A	A	A
Oils: sesame seed	-	-	A	-	-	A	A	A
Oils: silicone	-	-	A	-	-	A	A	A
Oils: soybean	D	A	A	-	-	A	A	A

A ▶ excellent compatibility
B ▶ good compatibility

C ▶ poor compatibility, not recommended
D ▶ no compatibility, not recommended

1 ▶ satisfactory up to 22°C
2 ▶ satisfactory up to 48°C

- ▶ not available

Chemical compatibility table

Fluids	Materials							
	Galvanised steel	S. steel AISI 304	S. steel AISI 316	Brass	Polyurethane	Viton	Teflon	NBR
Oils: sperm (whale)	-	-	A	-	-	A	A	A
Oils: tanning	-	-	A	-	-	A	-	A
Oils: transformer	A	A	A	-	-	A	A	A
Oils: turbine	A	A	A	-	-	A	A	B
Oleic acid	C	A	A	-	B	B	A	B
Palmitic acid	-	A	A	D	A	A	A	A
Perchloric acid	-	-	-	-	D	A	A	D
Petrolatum	-	A	A	-	-	A	C	A
Petroleum	-	A	A	A	-	A2	A2	A2
Phosphoric acid (<40%)	-	B	B	D	B	A	A	D
Phosphoric acid (>40%)	-	B	B	D	C	A	A	D
Photographic solutions	-	-	-	-	-	B1	A2	B
Picric acid	-	D	D	D	B	A	A	C
Potassium bicarbonate	-	B	B	-	-	A	A	A
Potassium bromide	D	A	A	-	-	A	A	A
Potassium chlorate	-	A	A	-	-	A	A	A
Potassium chloride	B	C	C	D	A	A	A	A
Potassium chromate	-	B	B	-	-	A	A	A
Potassium cyanide solutions	B	A	A	D	A	A	A	A
Potassium dichromate	C	A	A	D	A	A	A	A
Potassium hydroxide (caustic potash)	-	A	A	-	B	D	A	B
Potassium nitrate	-	B	A	B	A	A	A	A
Potassium permanganate	-	B	B	-	-	A	A	B
Potassium sulfate	B	B	B	B	A	A	A	A
Propane (liquefied)	-	A	A	A	B	A	A	A
Pyrogalllic acid	-	A	A	-	-	A	A	D
Rosins	D	A	A1	-	-	A	A	A2
Rum	-	A	A	-	D	A	A	A
Rust inhibitors	-	-	A	-	-	A	-	A
Salad dressings	-	-	A	-	-	A	-	A
Salt brine	-	A	A2	-	C	B	A	C
Salt water	-	C	B	A	A	A	A	A
Sea water	-	C	C	A	A	A	A	A2
Sewage (black water)	D	A	A	-	D	A	A	A
Shellac (bleached)	-	-	A	-	-	A	A	A2
Shellac (orange)	-	A	A	-	-	A	A	A
Silicone	-	-	A	-	-	A	A	A

A ▶ excellent compatibility
B ▶ good compatibility

C ▶ poor compatibility, not recommended
D ▶ no compatibility, not recommended

1 ▶ satisfactory up to 22°C
2 ▶ satisfactory up to 48°C

- ▶ not available

Fluids	Materials							
	Galvanised steel	S. steel AISI 304	S. steel AISI 316	Brass	Polyurethane	Viton	Teflon	NBR
Soap solutions	-	A	A1	A	A	A	A	A
Soda ash (sodium carbonate)	-	-	A	D	-	A	A	A1
Sodium aluminate	C	A	A	-	-	A	A	A
Sodium bicarbonate	C	A	A	-	-	A	A	A
Sodium bisulfate	D	A	A	-	-	A	A	A
Sodium bisulfite	-	A	A	-	-	A	A	A
Sodium carbonate	B	A	A	B	-	A	A	A
Sodium chlorate	C	A	A	-	-	A	A	A
Sodium chloride	C	C	C	D	A	A	A	A
Sodium chromate	B	A	-	B	-	A	A	A
Sodium cyanide	B	A	A	D	-	A	A	A
Sodium hydroxide (20%)	-	A	A	-	B	A	A	A
Sodium hydroxide (50%)	-	B	B	-	B	A	A	D
Sodium hydroxide (80%)	-	D	D	-	B	B	A	D
Sodium hypochlorite (<20%)	-	C	C	D	D	C	A	D
Sodium metasilicate	C	A	A	-	-	A	A	A
Sodium nitrate	B	A	A	-	-	A	A	C
Sodium perborate	B	C	C	-	-	A	A	B
Sodium peroxide	C	B	A	D	D	A	A	C
Sodium silicate	B	B	B	-	-	A	A	A
Sodium sulfate	B	A	A	-	A	A	A	A
Sodium sulfide	B	A	A	D	A	A	A	A
Sodium tetraborate	-	A	A	-	-	A	A	A
Sodium thiosulfate	-	A	A	-	A	A	A	B
Soy sauce	-	A	A	-	B	A	A	A
Stannic chloride	D	D	D	D	B	A	A	A
Starch	-	A	A	-	A	A	A	A
Stoddard solvent	A	A	A	A	A	A	A	B
Sulfuric acid (<10%)	-	C	C	D	D	A	A	D
Sulfuric acid (10-75%)	-	C	C	D	D	A	A	D
Sulfuric acid (75-100%)	-	C	C	D	D	A	A	D
Sulfurous acid	D	B	B	D	D	-	A	D
Tannic acid	C	A	A	B	A	A	A	A
Tartaric acid	D	A	A	B	A	A	A	A
Toluene	A	A	A	A	D	B	A	D
Tomato juice	-	A	A	-	-	A	A	A
Trichloroacetic acid	-	D	D	-	D	D	A	D

A ▶ excellent compatibility
B ▶ good compatibility

C ▶ poor compatibility, not recommended
D ▶ no compatibility, not recommended

1 ▶ satisfactory up to 22°C
2 ▶ satisfactory up to 48°C

- ▶ not available

Chemical compatibility table

Fluids	Materials							
	Galvanised steel	S. steel AISI 304	S. steel AISI 316	Brass	Polyurethane	Viton	Teflon	NBR
Turpentine	B	A	A	B	D	A	A	A
Urea	-	B	B	-	-	A	A	B
Urine	-	-	A	-	-	A1	A1	A1
Varnish	-	A	A	A	-	A	A	B
Varnish (xylene based)	A	A	A	A	D	D	A	D
Varnish diluted	-	A	A	A	D	A	A	D
Vegetable juice	-	A	A	-	-	A	A	A2
Vinegar	-	-	A	-	-	A	A	B
Water, acid, mine	D	A	B	B	A	A	A	A
Water, deionized	-	-	A2	-	-	A1	A2	A1
Weed killers	-	-	A	-	-	A	-	A
Whiskey and wine	-	-	A	-	-	A	A	A

A ▶ excellent compatibility
B ▶ good compatibility

C ▶ poor compatibility, not recommended
D ▶ no compatibility, not recommended

1 ▶ satisfactory up to 22°C
2 ▶ satisfactory up to 48°C

- ▶ not available

Applications with special liquids

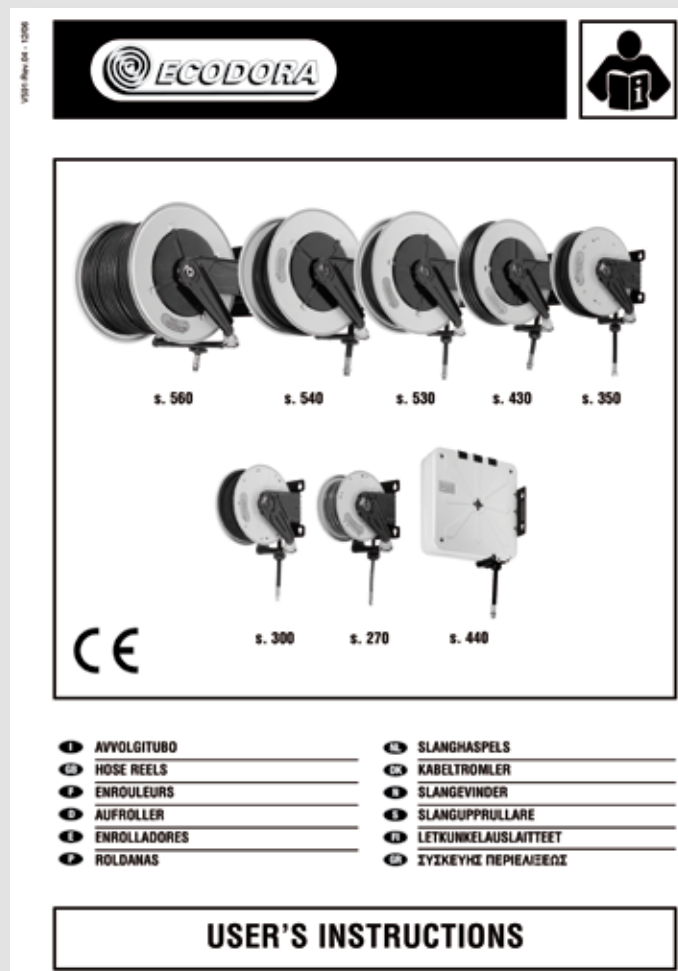
Kind of liquid	Kind of hose reel
Antifreeze	Hose reel air-water 20 bar (look at page)
Windshield washing liquid	Hose reel air-water 20 bar (look at page)
Nitrogen	(At room temperature) for tyre inflation, industrial application, hose reel air-water 20 bar (look at page)
Argon	Hoses with EN559 certification (look at page)
Propane	Hoses with EN559 certification (look at page)
Natural gas	Hoses with EN559 certification (look at page)
Oxygen	Swivel joint with special grease not flammable (special hose for oxygen), ask our technical department for more information
Skydroll	EPDM seals needed and stainless steel passages, ask our technical department for more information

Guide to ordering spare parts

You can easily make your spare parts orders by consulting **Ecodora Spare Parts Catalogue** illustrating for each model of hose reel the **exploded view of each item and spare parts guide**.

The **spare parts guide** is subdivided in 3 columns:

- ▶ List of spare parts kit (code KR) : a KR includes a group of selected parts shown with the same colour in the exploded view; the spare parts composing the kit can't be supplied separately except those with a proper code indicated in the exploded view.
 - ▶ List of spare parts that can be supplied separately.
 - ▶ Joints gaskets list shown on the exploded view.
- ⚠ Attention: check carefully swivel joint and pressure indicated on the label to order the suitable gaskets depending on type of utilisation.



Each Hose Reel package contain User's Instructions.

Index P/N for fixed hose reels

P/N	page	P/N	page	P/N	page
OE33105	50	302/31	36	430/08	50
OE33114	50	302/35	38-39	430/10	32
OE33116	50	302/36	38	430/100	45
OE33117	50	302/40	34-35-36	430/11	32
OE33118	50	302/41	40	430/12	32
OE33119	50	302/42	40	430/13	32
OE33128	50	302/50	41	430/14	32
OE33129	50	302/51	41	430/20	34
OE33130	50	303/11	33	430/21	34
OE33131	50	303/21	35	430/22	34
OE33132	50	303/22	35	430/30	36
OE33133	50	303/31	37	430/300	45
OE33270	50	303/36	39	430/31	36
OE33271	50	350/10	32	430/32	36
OE33272	50	350/11	32	430/35	38
OE33273	50	350/14	32	430/38	38
OE33274	50	350/20	34	430/39	38
OE33275	50	350/21	34	430/40	40
OE33276	50	350/22	34	430/40/AS	44
OE33277	50	350/23	34	430/400	45
OE38059	50	350/30	36	430/41	40
OE38068	50	350/31	36	430/41/AS	44
OE38071	50	350/32	36	430/415	40-44
OE38072	50	350/35	38	430/415/AS	44
OE38073	50	350/36	38	430/416	40
OE38074	50	350/37	38	430/417	40
OE38120	50	350/40	40	430/42	40
OE38121	50	350/41	40	430/50	41
OE38123	50	350/42	40	430/500	45
OE38124	50	350/43	40	430/51	41
OE66891	50	350/50	41	430/52	41
OE66892	50	350/51	41	430/55	41
OE66893	50	350/52	41	430/5500	45
270/10	45	350/80	44	430/56	41
270/11	32	350/81	44	430/60	42
270/14	32	350/82	44	430/61	42
272/10	32	352/10	32	430/62	42
272/11	32	352/11	32	430/70	43
272/14	32	352/14	32	430/71	43
300/10	32	352/21	34	430/72	43
300/11	32	352/22	34	430/80	44
300/20	34	352/23	34	430/82	44
300/21	34	352/30	36-37	430/84	44
300/22	34	352/31	36	432/10	32-33
300/30	36	352/32	36	432/11	32
300/31	36	352/35	38-39	432/12	32
300/35	38	352/36	38	432/13	32
300/36	38	352/37	38	432/14	32
300/40	40	352/40	34-35-40	432/21	34
300/41	40	352/41	40	432/22	34
300/42	40	352/42	40	432/31	36
300/50	41	352/43	40	432/32	36
300/51	41	352/50	41	432/38	38
300/80	44	352/51	41	432/39	38
300/81	44	352/52	41	432/41	40
300/82	44	353/22	35	432/42	40
302/10	32-33	353/31	37-39	432/50	41
302/11	32	430/01	49	432/51	41
302/21	34	430/02	49	432/52	41
302/22	34	430/05	49	432/55	41
302/30	36-37	430/06	49	432/56	41

P/N	page
433/11	33
433/12	33
433/21	35
433/22	35
433/31	37
433/32	37
433/38	39
433/39	39
434/20	34-35-40-46
434/30	36-37-46
434/35	38-39-46
435/20	47
436/20	42
436/250	42
436/251	42
436/252	42
440/01	49
440/05	49
440/10	48
440/11	48
440/12	48
440/13	48
440/14	48
440/40	48
440/41	48
440/41/AS	44
440/42	48
440/50	48
440/51	48
440/52	48
440/55	48
440/56	48
4430/10	32
4430/11	32
4430/12	32
4430/13	32
4430/14	32
4430/20	34
4430/21	34
4430/22	34
4430/30	36
4430/31	36
4430/32	36
4430/40	40
4430/40/AS	44
4430/41	40
4430/415	40
4430/416	40
4430/417	40
4430/42	40
4430/50	41
4430/51	41
4430/52	41
4430/55	41
4430/56	41
4430/60	42
4430/61	42
4430/62	42
4432/10	32-33
4432/11	32
4432/12	32

P/N	page
4432/13	32
4432/14	32
4432/21	34
4432/22	34
4432/31	36
4432/32	36
4432/38	38
4432/39	38
4432/41	40
4432/42	40
4432/50	41
4432/51	41
4432/52	41
4432/55	41
4432/56	41
4433/11	33
4433/12	33
4433/21	35
4433/22	35
4433/31	37
4433/32	37
4434/20	34-35-40
4434/30	36-37
4434/35	38
4436/20	42
4436/21	42
4440/10	48
4440/11	48
4440/12	48
4440/13	48
4440/14	48
4440/40	48
4440/41	48
4440/42	48
4440/50	48
4440/51	48
4440/52	48
4440/55	48
4440/56	48
530/01	49
530/02	49
530/05	49
530/06	49
530/08	50
530/10	32
530/100	45
530/11	32
530/12	32
530/20	34
530/21	34
530/22	34
530/30	36
530/300	45
530/31	36
530/32	36
530/35	38
530/36	38
530/37	38
530/40	40
530/400	45
530/41	40

P/N	page
530/415	40
530/416	40
530/42	40
530/50	41
530/500	45
530/51	41
530/52	41
530/550	38
530/5500	45
530/60	42
530/63	42
530/64	42
530/70	43
530/71	43
530/72	43
530/73	43
530/74	43
530/75	43
530/80	44
530/82	44
530/84	44
532/10	32-33
532/11	32
532/12	32
532/21	34
532/22	34
532/31	36
532/32	36
532/36	38
532/37	38
532/41	40
532/42	40
532/50	41
532/51	41
532/52	41
533/11	33
533/12	33
533/22	35
533/32	37
533/37	39
534/20	34-35-40-46
534/250	42-46
534/30	36-37-46
534/35	38-39-46
534/550	38-46
535/20	47
537/20	42
537/251	42
537/252	42
540/01	49
540/02	49
540/05	49
540/06	49
540/10	32-42
540/100	45
540/11	32
540/12	32
540/13	32
540/15	32
540/16	32
540/20	34

Index P/N for fixed hose reels

P/N	page	P/N	page	P/N	page
540/21	34	543/31	37	562/24	34
540/22	34	544/20	34-35-40-46	562/25	34
540/23	34	544/25	34-40-46	562/27	34
540/25	34	544/30	36-37-46	562/28	34
540/26	34	544/35	38-46	562/29	34
540/30	36	544/550	38	562/31	36
540/300	45	545/20	47	562/32	36
540/31	36	545/25	47	562/36	38
540/35	38	560/01	49	562/37	38
540/36	38	560/02	49	562/63	42
540/40	40	560/10	32-42	562/64	42
540/400	45	560/11	32	562/65	42
540/411	40	560/12	32	563/11	33
540/412	40	560/13	32	563/13	33
540/413	40	560/14	32	563/14	33
540/414	40	560/15	32	563/15	33
540/45	40	560/16	32	563/21	35
540/46	40	560/17	32	563/23	35
540/50	41	560/18	32	563/24	35
540/500	45	560/19	32	563/25	35
540/51	41	560/20	34	563/31	37
540/550	38	560/21	34	563/36	39
540/5500	45	560/22	34	564/20	34-35-40-46
540/61	42	560/23	34	564/26	34-40-46
540/62	42	560/24	34	564/26	47
540/63	42	560/25	34	564/30	36-37-46
540/70	43	560/26	34	564/35	38-39-46
540/71	43	560/27	34	565/20	47
540/72	43	560/28	34	882/05	57
540/73	43	560/29	34	882/06	52-57
540/74	43	560/30	36	882/10	57
540/75	43	560/31	36	882/15	57
540/76	43	560/32	36	882/8	57
540/77	43	560/35	38	900	50
540/78	43	560/36	38	906/06	52-55
540/79	43	560/37	38	906/10	55
540/80	44	560/40	40	906/15	55
540/82	44	560/411	40	906/25	55
542/10	32-33-42	560/413	40	906/40	55
542/11	32	560/414	40	907/06	54-52
542/12	32	560/415	40	907/10	54
542/13	32	560/46	40	907/15	54
542/15	32-33	560/47	40	907/20	54
542/16	32	560/48	40	907/25	54
542/21	34	560/49	40	907/30	54
542/22	34	560/63	42	907/40	54
542/23	34	560/64	42	907/50	54
542/26	34	560/65	42	932/1	52-53
542/31	36	562/10	32-33-42	932/15	53
542/36	38	562/11	32	932/2	52-53
542/46	40	562/12	32	935/12	57
542/50	41	562/13	32	935/13	57
542/51	41	562/14	32	935/16	57
542/61	42	562/15	32	935/18	57
542/62	42	562/16	32	935/4	52-57
542/63	42	562/17	32	943/12	54
543/11	33	562/18	32	943/17	54
543/12	33	562/19	32	944/12	55
543/13	33	562/21	34	945/12	54
543/16	33	562/22	34	945/17	54
543/22	35	562/23	34	946/12	55

P/N	page
949/15	58
949/20	58
949/28	58
949/8	58
950/06	55
950/12	55
952/06	52-53
952/10	53
952/12	53
952/13	53
952/18	53
952/19	53
953/12	56
953/13	54
953/17	56
953/18	54
954/13	55
955/06	52-54
955/12	54
955/18	54
955/20	54
955/25	54
955/30	54
955/40	54
955/50	54
956/06	52-55
956/12	55
956/18	55
956/25	55
956/30	55
956/40	55
957/06	52-57
957/1	57
957/10	57
957/15	57
957/2	57
957/20	57
957/25	57
957/30	57
959/10	58
959/15	58
959/18	58
959/2	52-58
959/27	58
959/30	58
960/06	52-55
960/10	55
960/15	55
960/20	55
960/25	55
960/30	55
962/10	53
962/15	53
962/20	53
962/25	53
962/30	53
962/40	53
962/50	53
962/60	53
963/05	54
963/06	52-54-56

P/N	page
963/1	52-54-56
963/10	56
963/11	56
963/12	54
963/14	54
963/15	56
963/19	54
963/2	52-54-56
963/20	56
963/24	54
963/25	56
963/29	54
963/30	56
963/39	54
963/4	52-54-56
963/40	56
963/49	54
963/50	56
963/59	54
963/60	56
963/7	56
963/8	56
963/9	54
964/06	52-55
964/15	55
964/25	55
964/8	55
970/15	55
970/20	55
970/30	55
970/40	55
972/15	53
972/20	53
972/30	53
972/35	53
972/40	53
973/14	54-56
973/19	54-56
973/29	54-56
973/305	52-56
973/306	52-56
973/308	56
973/312	56
973/315	56
973/320	56
973/330	56
973/34	54-56
973/340	56
973/39	54
974/20	55
974/30	55
974/40	55
978/06	57
978/12	57
978/15	57
978/20	57
978/40	57
978/8	57
983/05	54
980/06	52-55
980/15	55

P/N	page
980/20	55
980/30	55
982/15	53
982/20	53
982/30	53
983/15	54
983/19	54
983/29	54
983/301	52-56
983/302	52-56
983/306	52-56
983/310	56
983/315	56
983/320	56
983/330	56
984/06	52-55
984/20	55
984/30	55
988/06	52-57
988/15	57
988/20	57
988/30	57
988/8	57-65
993/13	58
993/17	58
993/20	58
993/25	58
993/30	58
993/310	56
993/35	58
994/12	58
994/15	58
994/20	58
994/25	58
994/30	58
994/35	58
995/15	58
995/2	52-58
995/20	58
995/25	58
995/27	58
998/10	57